

MPP10 Polyclonal Antibody
Catalog # AP73262**Specification**

MPP10 Polyclonal Antibody - Product Information

Application	WB
Primary Accession	O00566
Reactivity	Human
Host	Rabbit
Clonality	Polyclonal

MPP10 Polyclonal Antibody - Additional Information**Gene ID** 10199**Other Names**

MPHOSPH10; MPP10; U3 small nucleolar ribonucleoprotein protein MPP10; M phase phosphoprotein 10

Dilution

WB~~Western Blot: 1/500 - 1/2000. ELISA: 1/10000. Not yet tested in other applications.

Format

Liquid in PBS containing 50% glycerol, 0.5% BSA and 0.09% (W/V) sodium azide.

Storage Conditions

-20°C

MPP10 Polyclonal Antibody - Protein Information**Name** MPHOSPH10 ([HGNC:7213](#))**Synonyms** MPP10**Function**

Component of the 60-80S U3 small nucleolar ribonucleoprotein (U3 snoRNP). Required for the early cleavages during pre-18S ribosomal RNA processing (PubMed:12655004). Part of the small subunit (SSU) processome, first precursor of the small eukaryotic ribosomal subunit. During the assembly of the SSU processome in the nucleolus, many ribosome biogenesis factors, an RNA chaperone and ribosomal proteins associate with the nascent pre-rRNA and work in concert to generate RNA folding, modifications, rearrangements and cleavage as well as targeted degradation of pre-ribosomal RNA by the RNA exosome (PubMed:34516797).

Cellular Location

Nucleus, nucleolus. Chromosome Note=Fibrillar region of the nucleolus (PubMed:9450966). After dissolution of the nucleolus in early M phase becomes associated with chromosomes through

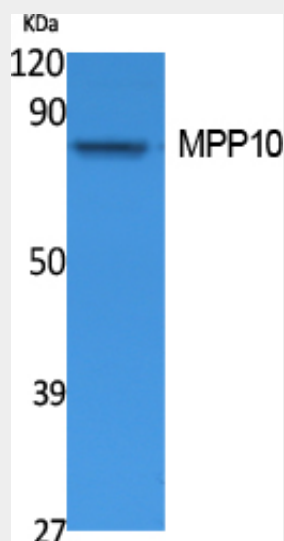
metaphase and anaphase (PubMed:9450966). In telophase localized to small cellular prenucleolar bodies that not always contain fibrillarin (PubMed:9450966). The reassociation with nucleolus is preceded by the arrival of fibrillarin (PubMed:9450966)

MPP10 Polyclonal Antibody - Protocols

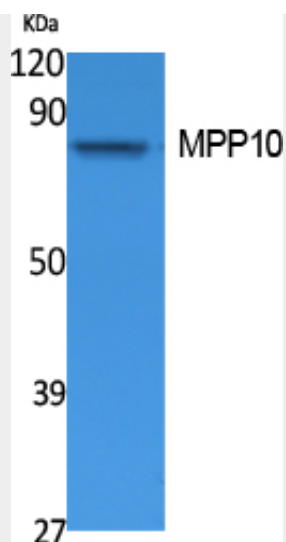
Provided below are standard protocols that you may find useful for product applications.

- [Western Blot](#)
- [Blocking Peptides](#)
- [Dot Blot](#)
- [Immunohistochemistry](#)
- [Immunofluorescence](#)
- [Immunoprecipitation](#)
- [Flow Cytometry](#)
- [Cell Culture](#)

MPP10 Polyclonal Antibody - Images



Western Blot analysis of extracts from Jurkat cells, using MPP10 Polyclonal Antibody.. Secondary antibody was diluted at 1:20000 cells nucleus extracted by Minute TM Cytoplasmic and Nuclear Fractionation kit (SC-003, Invent biotech, MN, USA).



Western Blot analysis of extracts from Jurkat cells, using MPP10 Polyclonal Antibody.. Secondary antibody was diluted at 1:20000 cells nucleus extracted by Minute TM Cytoplasmic and Nuclear Fractionation kit (SC-003, Invent biotech, MN, USA).

MPP10 Polyclonal Antibody - Background

Component of the 60-80S U3 small nucleolar ribonucleoprotein (U3 snoRNP). Required for the early cleavages during pre-18S ribosomal RNA processing.