

Wnt-16 Polyclonal Antibody
Catalog # AP73289**Specification**

Wnt-16 Polyclonal Antibody - Product Information

Application	WB
Primary Accession	Q9UBV4
Reactivity	Human, Mouse, Rat
Host	Rabbit
Clonality	Polyclonal

Wnt-16 Polyclonal Antibody - Additional Information**Gene ID** 51384**Other Names**

WNT16; Protein Wnt-16

Dilution

WB~~Western Blot: 1/500 - 1/2000. ELISA: 1/40000. Not yet tested in other applications.

Format

Liquid in PBS containing 50% glycerol, 0.5% BSA and 0.09% (W/V) sodium azide.

Storage Conditions

-20°C

Wnt-16 Polyclonal Antibody - Protein Information**Name** WNT16**Function**

Ligand for members of the frizzled family of seven transmembrane receptors. Probable developmental protein. May be a signaling molecule which affects the development of discrete regions of tissues. Is likely to signal over only few cell diameters (By similarity).

Cellular Location

Secreted, extracellular space, extracellular matrix

Tissue Location

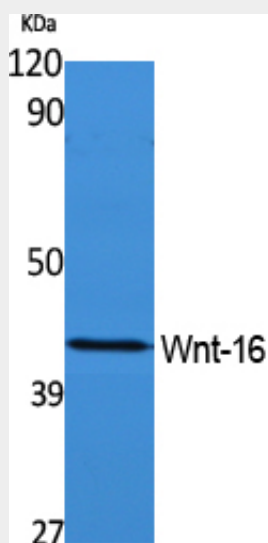
Isoform Wnt-16b is expressed in peripheral lymphoid organs such as spleen, appendix, and lymph nodes, in kidney but not in bone marrow. Isoform Wnt-16a is expressed at significant levels only in the pancreas

Wnt-16 Polyclonal Antibody - Protocols

Provided below are standard protocols that you may find useful for product applications.

- [Western Blot](#)
- [Blocking Peptides](#)
- [Dot Blot](#)
- [Immunohistochemistry](#)
- [Immunofluorescence](#)
- [Immunoprecipitation](#)
- [Flow Cytometry](#)
- [Cell Culture](#)

Wnt-16 Polyclonal Antibody - Images



Wnt-16 Polyclonal Antibody - Background

Ligand for members of the frizzled family of seven transmembrane receptors. Probable developmental protein. May be a signaling molecule which affects the development of discrete regions of tissues. Is likely to signal over only few cell diameters (By similarity).