

Neprilysin Antibody (C-term)
Affinity Purified Rabbit Polyclonal Antibody (Pab)
Catalog # AP7329B

Specification

Neprilysin Antibody (C-term) - Product Information

Application	WB, FC, IHC-P,E
Primary Accession	P08473
Other Accession	P07861 , P08049 , Q61391
Reactivity	Human
Predicted	Mouse, Rabbit, Rat
Host	Rabbit
Clonality	Polyclonal
Isotype	Rabbit IgG
Antigen Region	506-534

Neprilysin Antibody (C-term) - Additional Information

Gene ID 4311

Other Names

Neprilysin, Atriopeptidase, Common acute lymphocytic leukemia antigen, CALLA, Enkephalinase, Neutral endopeptidase 2411, NEP, Neutral endopeptidase, Skin fibroblast elastase, SFE, CD10, MME, EPN

Target/Specificity

This Neprilysin antibody is generated from rabbits immunized with a KLH conjugated synthetic peptide between 506-534 amino acids from the C-terminal region of human Neprilysin.

Dilution

WB~~1:1000
FC~~1:10~50
IHC-P~~1:50~100
E~~Use at an assay dependent concentration.

Format

Purified polyclonal antibody supplied in PBS with 0.09% (W/V) sodium azide. This antibody is purified through a protein A column, followed by peptide affinity purification.

Storage

Maintain refrigerated at 2-8°C for up to 2 weeks. For long term storage store at -20°C in small aliquots to prevent freeze-thaw cycles.

Precautions

Neprilysin Antibody (C-term) is for research use only and not for use in diagnostic or therapeutic procedures.

Neprilysin Antibody (C-term) - Protein Information

Name MME {ECO:0000303|PubMed:27588448, ECO:0000312|HGNC:HGNC:7154}

Function Thermolysin-like specificity, but is almost confined on acting on polypeptides of up to 30 amino acids (PubMed:[15283675](#), PubMed:[6208535](#), PubMed:[6349683](#), PubMed:[8168535](#)). Biologically important in the destruction of opioid peptides such as Met- and Leu-enkephalins by cleavage of a Gly-Phe bond (PubMed:[17101991](#), PubMed:[6349683](#)). Catalyzes cleavage of bradykinin, substance P and neurotensin peptides (PubMed:[6208535](#)). Able to cleave angiotensin-1, angiotensin-2 and angiotensin 1-9 (PubMed:[15283675](#), PubMed:[6349683](#)). Involved in the degradation of atrial natriuretic factor (ANF) and brain natriuretic factor (BNP(1-32)) (PubMed:[16254193](#), PubMed:[2531377](#), PubMed:[2972276](#)). Displays UV-inducible elastase activity toward skin preelastic and elastic fibers (PubMed:[20876573](#)).

Cellular Location

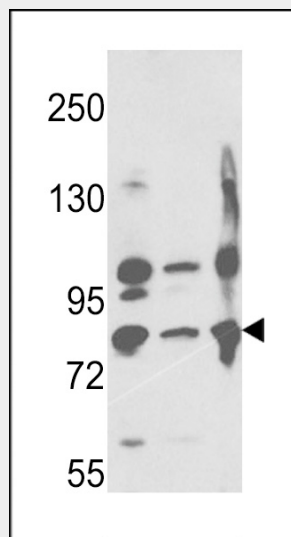
Cell membrane; Single-pass type II membrane protein

Neprilysin Antibody (C-term) - Protocols

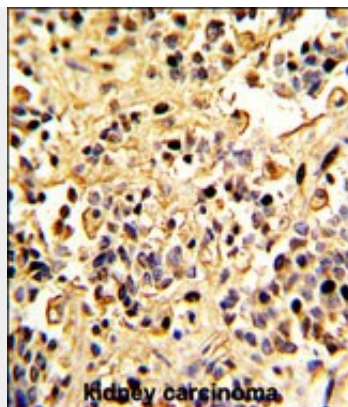
Provided below are standard protocols that you may find useful for product applications.

- [Western Blot](#)
- [Blocking Peptides](#)
- [Dot Blot](#)
- [Immunohistochemistry](#)
- [Immunofluorescence](#)
- [Immunoprecipitation](#)
- [Flow Cytometry](#)
- [Cell Culture](#)

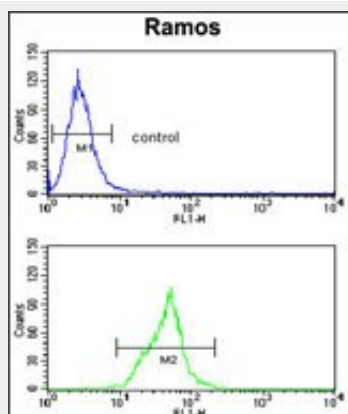
Neprilysin Antibody (C-term) - Images



Western blot analysis of Neprilysin Antibody (C-term) (Cat. #AP7329b) in A2058, A375, Ramos cell line lysates (35ug/lane). EPN (arrow) was detected using the purified Pab.



Formalin-fixed and paraffin-embedded human kidney carcinoma with Neprilysin Antibody (C-term), which was peroxidase-conjugated to the secondary antibody, followed by DAB staining. This data demonstrates the use of this antibody for immunohistochemistry; clinical relevance has not been evaluated.



Neprilysin Antibody (C-term) (Cat. #AP7329b) flow cytometry analysis of Ramos cells (bottom histogram) compared to a negative control cell (top histogram). FITC-conjugated goat-anti-rabbit secondary antibodies were used for the analysis.

Neprilysin Antibody (C-term) - Background

MME is a common acute lymphocytic leukemia antigen that is an important cell surface marker in the diagnosis of human acute lymphocytic leukemia (ALL). This protein is present on leukemic cells of pre-B phenotype, which represent 85% of cases of ALL. This protein is not restricted to leukemic cells, however, and is found on a variety of normal tissues. It is a protein that is particularly abundant in kidney, where it is present on the brush border of proximal tubules and on glomerular epithelium. The protein is a neutral endopeptidase that cleaves peptides at the amino side of hydrophobic residues and inactivates several peptide hormones including glucagon, enkephalins, substance P, neurotensin, oxytocin, and bradykinin.

Neprilysin Antibody (C-term) - References

- Dakka, N., Bellaoui, H. *Pediatr Hematol Oncol* 26 (4), 216-231 (2009)
- Wang, R., Wang, S. J. *Neurochem.* 108 (4), 1072-1082 (2009)
- Shipp, M.A. *Proc. Natl. Acad. Sci. U.S.A.* 88 (23), 10662-10666 (1991)
- Shipp, M.A. *Proc. Natl. Acad. Sci. U.S.A.* 86 (1), 297-301 (1989)