

**SCP-3 Polyclonal Antibody**  
**Catalog # AP73300****Specification**

---

**SCP-3 Polyclonal Antibody - Product Information**

Application	WB
Primary Accession	<a href="#">Q8IZU3</a>
Reactivity	Human, Mouse
Host	Rabbit
Clonality	Polyclonal

**SCP-3 Polyclonal Antibody - Additional Information****Gene ID** 50511**Other Names**

SYCP3; SCP3; Synaptonemal complex protein 3; SCP-3

**Dilution**

WB~~Western Blot: 1/500 - 1/2000. ELISA: 1/20000. Not yet tested in other applications.

**Format**

Liquid in PBS containing 50% glycerol, 0.5% BSA and 0.09% (W/V) sodium azide.

**Storage Conditions**

-20°C

**SCP-3 Polyclonal Antibody - Protein Information****Name** SYCP3**Synonyms** SCP3**Function**

Component of the synaptonemal complexes (SCS), formed between homologous chromosomes during meiotic prophase. Required for centromere pairing during meiosis in male germ cells (By similarity). Required for normal meiosis during spermatogenesis and male fertility (PubMed:<a href="http://www.uniprot.org/citations/14643120" target="\_blank">14643120</a>). Plays a lesser role in female fertility. Required for efficient phosphorylation of HORMAD1 and HORMAD2 (By similarity).

**Cellular Location**

Nucleus {ECO:0000250|UniProtKB:Q60547}. Chromosome {ECO:0000250|UniProtKB:Q60547}. Chromosome, centromere {ECO:0000250|UniProtKB:Q60547}. Note=It is present in early unpaired cores, in the lateral domains of the synaptonemal complex and in the chromosome cores when they separate at diplotene. It is found axial to the metaphase I chromosomes and in association with pairs of sister centromeres. The centromere-associated protein becomes dissociated from the centromeres at anaphase II and is not found in mitotic metaphase centromeres.

{ECO:0000250|UniProtKB:Q60547}

#### Tissue Location

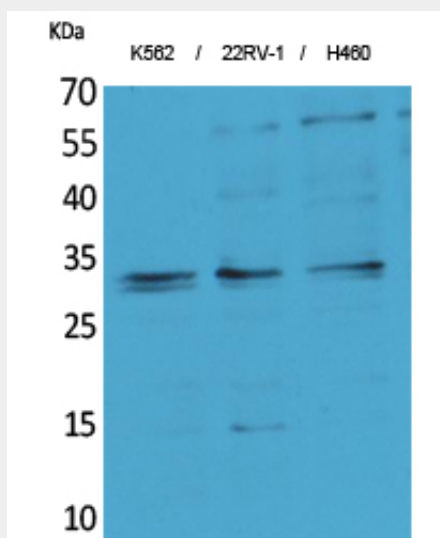
Testis-specific.

### SCP-3 Polyclonal Antibody - Protocols

Provided below are standard protocols that you may find useful for product applications.

- [Western Blot](#)
- [Blocking Peptides](#)
- [Dot Blot](#)
- [Immunohistochemistry](#)
- [Immunofluorescence](#)
- [Immunoprecipitation](#)
- [Flow Cytometry](#)
- [Cell Culture](#)

### SCP-3 Polyclonal Antibody - Images



### SCP-3 Polyclonal Antibody - Background

Component of the synaptonemal complexes (SCS), formed between homologous chromosomes during meiotic prophase. Required for centromere pairing during meiosis in male germ cells (By similarity). Required for normal meiosis during spermatogenesis and male fertility (PubMed:14643120). Plays a lesser role in female fertility. Required for efficient phosphorylation of HORMAD1 and HORMAD2 (By similarity).