

**KLF12 Polyclonal Antibody**  
**Catalog # AP73302****Specification**

---

**KLF12 Polyclonal Antibody - Product Information**

Application	WB, IHC-P
Primary Accession	<a href="#">Q9Y4X4</a>
Reactivity	Human, Mouse
Host	Rabbit
Clonality	Polyclonal

**KLF12 Polyclonal Antibody - Additional Information****Gene ID** 11278**Other Names**

KLF12; AP2REP; HSPC122; Krueppel-like factor 12; Transcriptional repressor AP-2rep

**Dilution**

WB~~Western Blot: 1/500 - 1/2000. IHC-p: 1:100-300 ELISA: 1/20000. Not yet tested in other applications.

IHC-P~~N/A

**Format**

Liquid in PBS containing 50% glycerol, 0.5% BSA and 0.09% (W/V) sodium azide.

**Storage Conditions**

-20°C

**KLF12 Polyclonal Antibody - Protein Information****Name** KLF12**Synonyms** AP2REP**Function**

Confers strong transcriptional repression to the AP-2-alpha gene. Binds to a regulatory element (A32) in the AP-2-alpha gene promoter.

**Cellular Location**

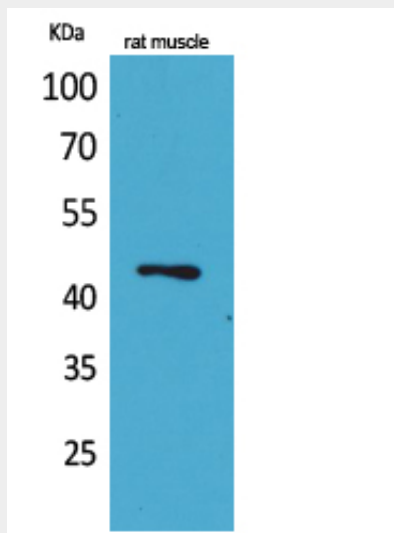
Nucleus.

**KLF12 Polyclonal Antibody - Protocols**

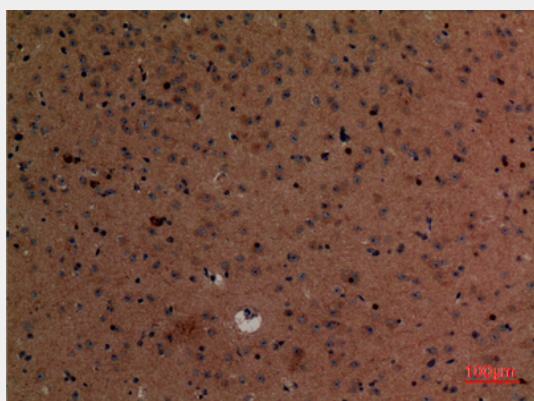
Provided below are standard protocols that you may find useful for product applications.

- [Western Blot](#)
- [Blocking Peptides](#)
- [Dot Blot](#)
- [Immunohistochemistry](#)
- [Immunofluorescence](#)
- [Immunoprecipitation](#)
- [Flow Cytometry](#)
- [Cell Culture](#)

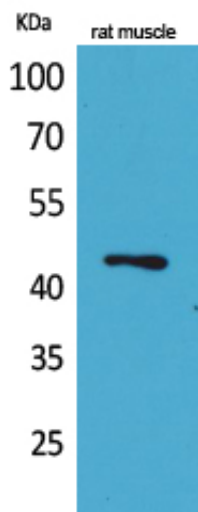
#### KLF12 Polyclonal Antibody - Images



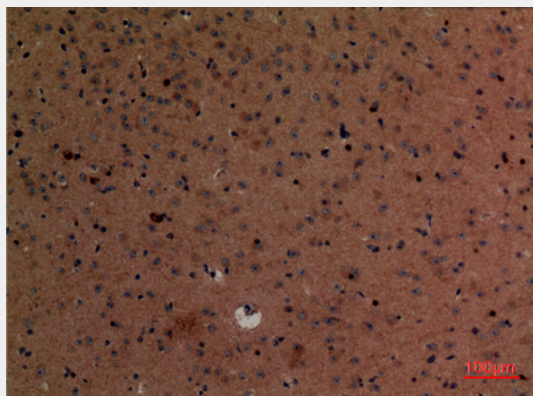
Western Blot analysis of rat muscle cells using KLF12 Polyclonal Antibody.. Secondary antibody was diluted at 1:20000 cells nucleus extracted by Minute TM Cytoplasmic and Nuclear Fractionation kit (SC-003, Invent biotech, MN, USA).



Immunohistochemical analysis of paraffin-embedded mouse-brain, antibody was diluted at 1:100



Western Blot analysis of rat muscle cells using KLF12 Polyclonal Antibody.. Secondary antibody was diluted at 1:20000 cells nucleus extracted by Minute TM Cytoplasmic and Nuclear Fractionation kit (SC-003, Invent biotech, MN, USA).



Immunohistochemical analysis of paraffin-embedded mouse-brain, antibody was diluted at 1:100

#### **KLF12 Polyclonal Antibody - Background**

Confers strong transcriptional repression to the AP-2- alpha gene. Binds to a regulatory element (A32) in the AP-2-alpha gene promoter.