

DR3 Polyclonal Antibody
Catalog # AP73318**Specification**

DR3 Polyclonal Antibody - Product Information

Application	WB, IHC-P
Primary Accession	Q93038
Reactivity	Human
Host	Rabbit
Clonality	Polyclonal

DR3 Polyclonal Antibody - Additional Information**Gene ID** 8718**Other Names**

TNFRSF25; APO3; DDR3; DR3; TNFRSF12; WSL; WSL1; Tumor necrosis factor receptor superfamily member 25; Apo-3; Apoptosis-inducing receptor AIR; Apoptosis-mediating receptor DR3; Apoptosis-mediating receptor TRAMP; Death receptor 3; Lymphocyte-associated receptor of death; LARD; Protein WSL; Protein WSL-1

Dilution

WB~~Western Blot: 1/500 - 1/2000. IHC-p: 1:100-300 ELISA: 1/20000. Not yet tested in other applications.
IHC-P~~N/A

Format

Liquid in PBS containing 50% glycerol, 0.5% BSA and 0.09% (W/V) sodium azide.

Storage Conditions

-20°C

DR3 Polyclonal Antibody - Protein Information**Name** TNFRSF25**Synonyms** APO3, DDR3, DR3, TNFRSF12, WSL, WSL1**Function**

Receptor for TNFSF12/APO3L/TWEAK. Interacts directly with the adapter TRADD. Mediates activation of NF-kappa-B and induces apoptosis. May play a role in regulating lymphocyte homeostasis.

Cellular Location

[Isoform 1]: Cell membrane; Single-pass type I membrane protein [Isoform 9]: Cell membrane; Single-pass type I membrane protein [Isoform 3]: Secreted. [Isoform 5]: Secreted. [Isoform 7]: Secreted. [Isoform 10]: Secreted.

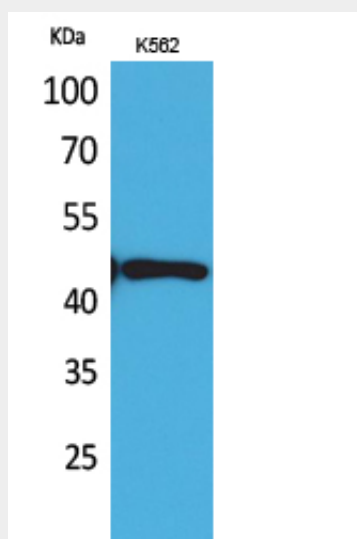
Tissue Location

Abundantly expressed in thymocytes and lymphocytes. Detected in lymphocyte-rich tissues such as thymus, colon, intestine, and spleen. Also found in the prostate

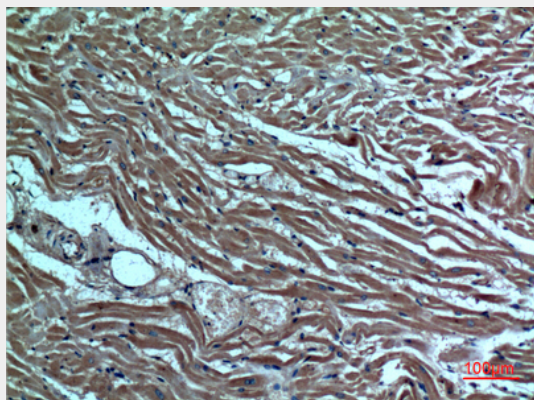
DR3 Polyclonal Antibody - Protocols

Provided below are standard protocols that you may find useful for product applications.

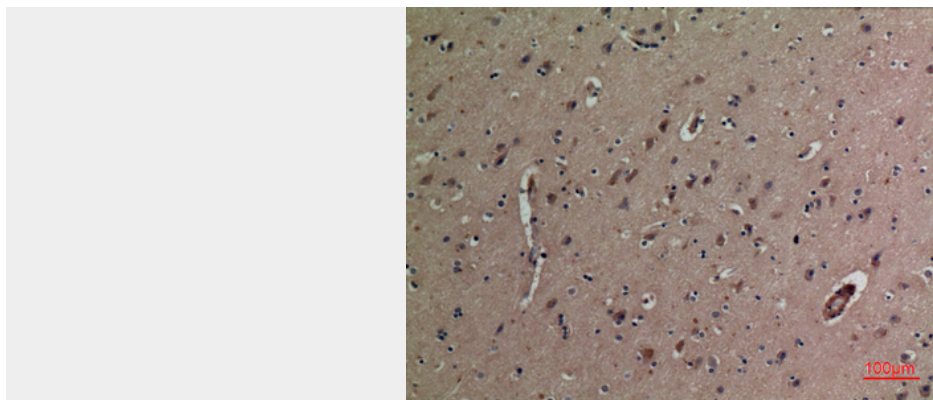
- [Western Blot](#)
- [Blocking Peptides](#)
- [Dot Blot](#)
- [Immunohistochemistry](#)
- [Immunofluorescence](#)
- [Immunoprecipitation](#)
- [Flow Cytometry](#)
- [Cell Culture](#)

DR3 Polyclonal Antibody - Images

Western Blot analysis of K562 cells using DR3 Polyclonal Antibody.. Secondary antibody was diluted at 1:20000



Immunohistochemical analysis of paraffin-embedded human-heart, antibody was diluted at 1:100



Immunohistochemical analysis of paraffin-embedded human-brain, antibody was diluted at 1:100

DR3 Polyclonal Antibody - Background

Receptor for TNFSF12/APO3L/TWEAK. Interacts directly with the adapter TRADD. Mediates activation of NF-kappa-B and induces apoptosis. May play a role in regulating lymphocyte homeostasis.