

**ALK-1 Polyclonal Antibody**  
Catalog # AP73365**Specification**

---

**ALK-1 Polyclonal Antibody - Product Information**

Application	<b>WB</b>
Primary Accession	<a href="#">P37023</a>
Reactivity	<b>Human, Mouse, Rat</b>
Host	<b>Rabbit</b>
Clonality	<b>Polyclonal</b>

**ALK-1 Polyclonal Antibody - Additional Information****Gene ID** 94**Other Names**

ACVRL1; ACVRLK1; ALK1; Serine/threonine-protein kinase receptor R3; SKR3; Activin receptor-like kinase 1; ALK-1; TGF-B superfamily receptor type I; TSR-I

**Dilution**

WB~~Western Blot: 1/500 - 1/2000. IHC-p: 1:100-300 ELISA: 1/20000. Not yet tested in other applications.

**Format**

Liquid in PBS containing 50% glycerol, 0.5% BSA and 0.09% (W/V) sodium azide.

**Storage Conditions**

-20°C

**ALK-1 Polyclonal Antibody - Protein Information****Name** ACVRL1**Synonyms** ACVRLK1, ALK1**Function**

Type I receptor for TGF-beta family ligands BMP9/GDF2 and BMP10 and important regulator of normal blood vessel development. On ligand binding, forms a receptor complex consisting of two type II and two type I transmembrane serine/threonine kinases. Type II receptors phosphorylate and activate type I receptors which autophosphorylate, then bind and activate SMAD transcriptional regulators. May bind activin as well.

**Cellular Location**

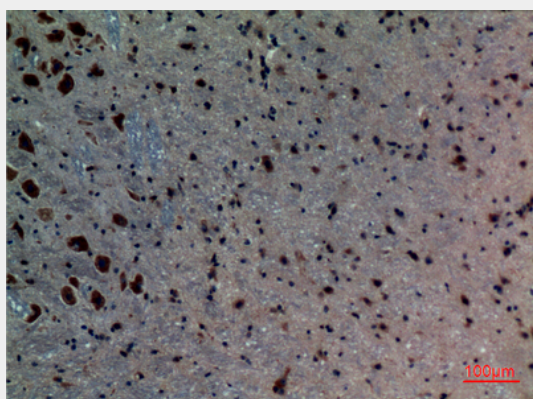
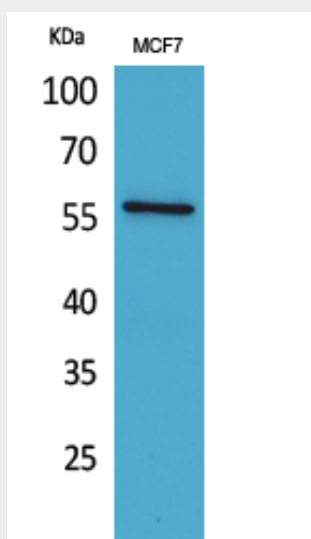
Cell membrane; Single-pass type I membrane protein

**ALK-1 Polyclonal Antibody - Protocols**

Provided below are standard protocols that you may find useful for product applications.

- [Western Blot](#)
- [Blocking Peptides](#)
- [Dot Blot](#)
- [Immunohistochemistry](#)
- [Immunofluorescence](#)
- [Immunoprecipitation](#)
- [Flow Cytometry](#)
- [Cell Culture](#)

#### ALK-1 Polyclonal Antibody - Images



#### ALK-1 Polyclonal Antibody - Background

Type I receptor for TGF-beta family ligands BMP9/GDF2 and BMP10 and important regulator of normal blood vessel development. On ligand binding, forms a receptor complex consisting of two type II and two type I transmembrane serine/threonine kinases. Type II receptors phosphorylate and activate type I receptors which autophosphorylate, then bind and activate SMAD transcriptional regulators. May bind activin as well.