

Aldolase C Polyclonal Antibody
Catalog # AP73367**Specification**

Aldolase C Polyclonal Antibody - Product Information

Application	WB, IHC-P
Primary Accession	P09972
Reactivity	Human, Mouse, Rat
Host	Rabbit
Clonality	Polyclonal

Aldolase C Polyclonal Antibody - Additional Information**Gene ID** 230**Other Names**

ALDOC; ALDC; Fructose-bisphosphate aldolase C; Brain-type aldolase

Dilution

WB~~Western Blot: 1/500 - 1/2000. IHC-p: 1:100-300 ELISA: 1/20000. Not yet tested in other applications.

IHC-P~~N/A

Format

Liquid in PBS containing 50% glycerol, 0.5% BSA and 0.09% (W/V) sodium azide.

Storage Conditions

-20°C

Aldolase C Polyclonal Antibody - Protein Information**Name** ALDOC ([HGNC:418](#))**Synonyms** ALDC**Function**

Catalyzes the reversible conversion of beta-D-fructose 1,6- bisphosphate (FBP) into two triose phosphate and plays a key role in glycolysis and gluconeogenesis.

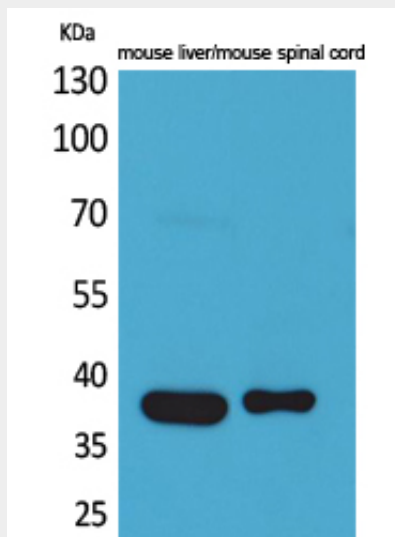
Aldolase C Polyclonal Antibody - Protocols

Provided below are standard protocols that you may find useful for product applications.

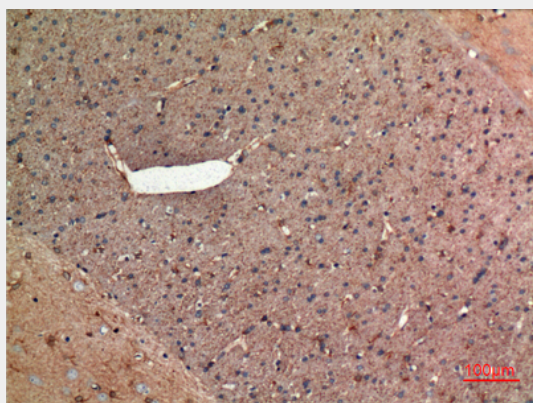
- [Western Blot](#)
- [Blocking Peptides](#)
- [Dot Blot](#)

- [Immunohistochemistry](#)
- [Immunofluorescence](#)
- [Immunoprecipitation](#)
- [Flow Cytometry](#)
- [Cell Culture](#)

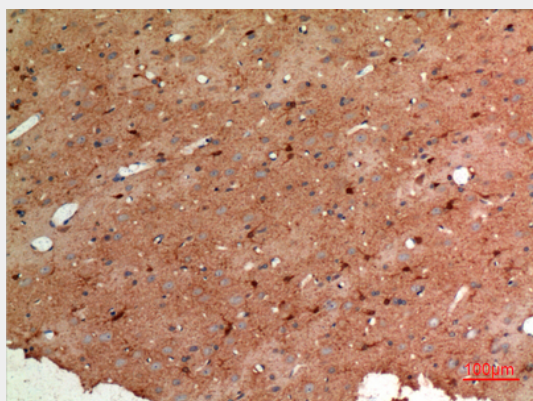
Aldolase C Polyclonal Antibody - Images



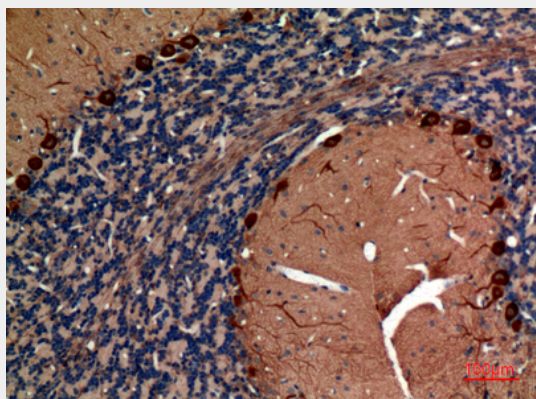
Western Blot analysis of mouse liver, mouse spinal cord cells using Aldolase C Polyclonal Antibody.. Secondary antibody was diluted at 1:20000



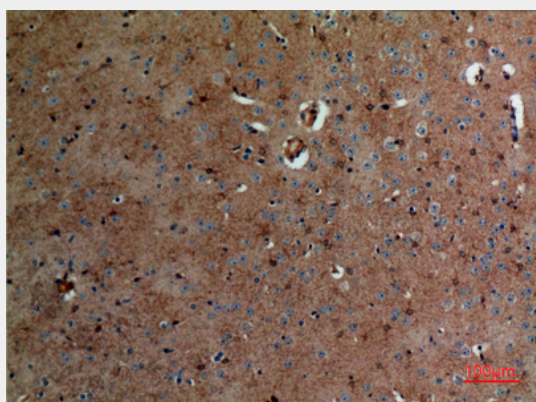
Immunohistochemical analysis of paraffin-embedded rat-brain, antibody was diluted at 1:100



Immunohistochemical analysis of paraffin-embedded rat-brain, antibody was diluted at 1:100



Immunohistochemical analysis of paraffin-embedded rat-brain, antibody was diluted at 1:100



Immunohistochemical analysis of paraffin-embedded mouse-brain, antibody was diluted at 1:100