

**CRP Polyclonal Antibody**  
**Catalog # AP73379****Specification**

---

**CRP Polyclonal Antibody - Product Information**

Application	WB, IHC-P
Primary Accession	<a href="#">P02741</a>
Reactivity	Human, Rat
Host	Rabbit
Clonality	Polyclonal

**CRP Polyclonal Antibody - Additional Information****Gene ID** 1401**Other Names**

CRP; PTX1; C-reactive protein

**Dilution**

WB~~Western Blot: 1/500 - 1/2000. IHC-p: 1:100-300 ELISA: 1/20000. Not yet tested in other applications.

IHC-P~~N/A

**Format**

Liquid in PBS containing 50% glycerol, 0.5% BSA and 0.09% (W/V) sodium azide.

**Storage Conditions**

-20°C

**CRP Polyclonal Antibody - Protein Information****Name** CRP**Synonyms** PTX1**Function**

Displays several functions associated with host defense: it promotes agglutination, bacterial capsular swelling, phagocytosis and complement fixation through its calcium-dependent binding to phosphorylcholine. Can interact with DNA and histones and may scavenge nuclear material released from damaged circulating cells.

**Cellular Location**

Secreted.

**Tissue Location**

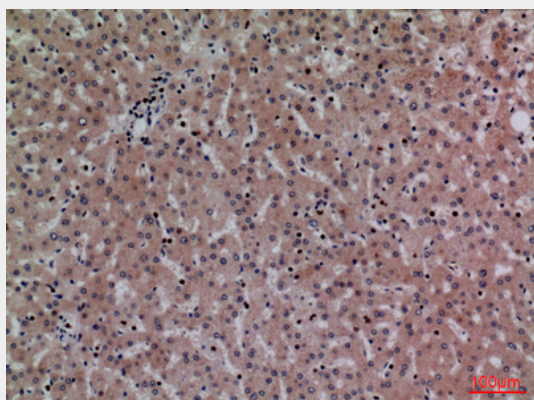
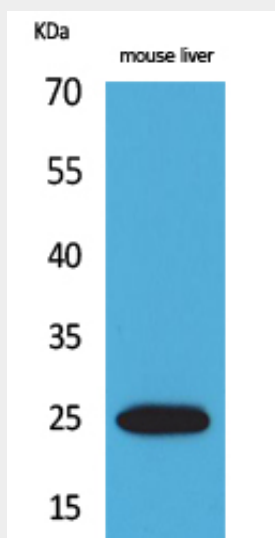
Found in plasma.

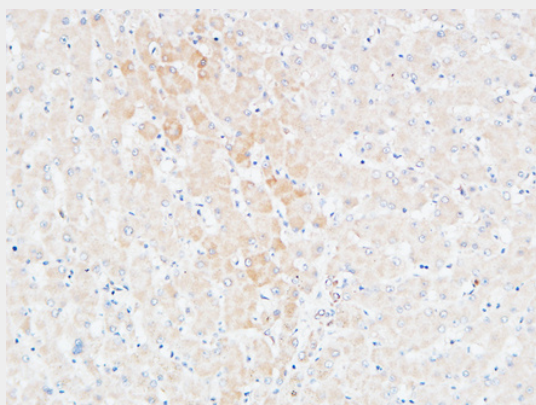
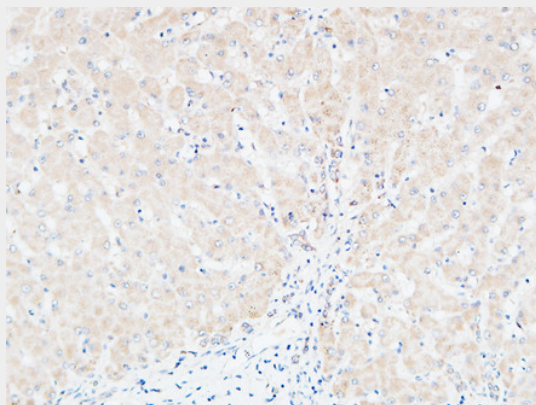
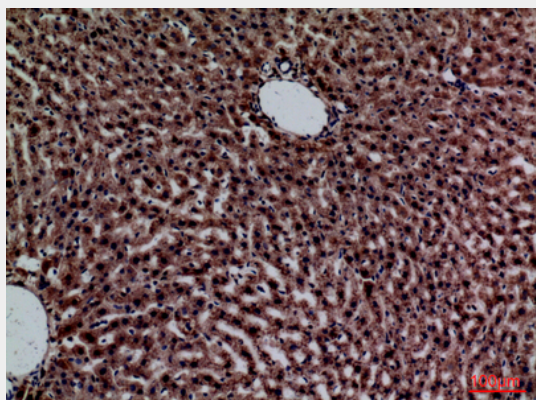
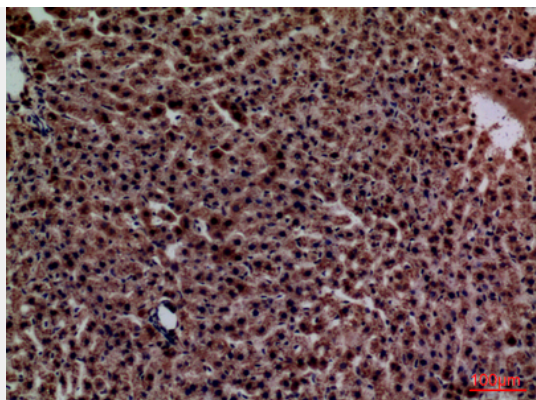
## CRP Polyclonal Antibody - Protocols

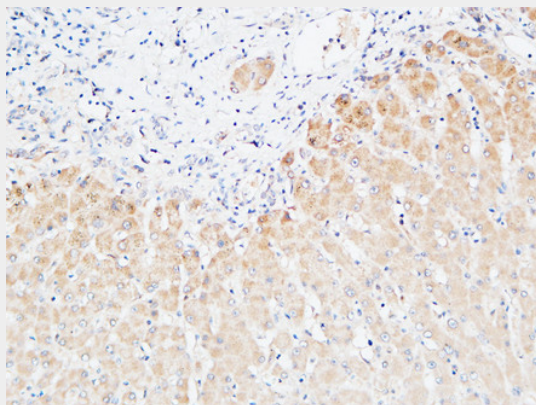
Provided below are standard protocols that you may find useful for product applications.

- [Western Blot](#)
- [Blocking Peptides](#)
- [Dot Blot](#)
- [Immunohistochemistry](#)
- [Immunofluorescence](#)
- [Immunoprecipitation](#)
- [Flow Cytometry](#)
- [Cell Culture](#)

## CRP Polyclonal Antibody - Images







### **CRP Polyclonal Antibody - Background**

Displays several functions associated with host defense: it promotes agglutination, bacterial capsular swelling, phagocytosis and complement fixation through its calcium-dependent binding to phosphorylcholine. Can interact with DNA and histones and may scavenge nuclear material released from damaged circulating cells.