

ADM Polyclonal Antibody
Catalog # AP73385**Specification**

ADM Polyclonal Antibody - Product Information

Application	WB, IHC-P
Primary Accession	P35318
Reactivity	Human, Rat
Host	Rabbit
Clonality	Polyclonal

ADM Polyclonal Antibody - Additional Information**Gene ID** 133**Other Names**

ADM; AM; ADM

Dilution

WB~~Western Blot: 1/500 - 1/2000. IHC-p: 1:100-300 ELISA: 1/20000. Not yet tested in other applications.

IHC-P~~N/A

Format

Liquid in PBS containing 50% glycerol, 0.5% BSA and 0.09% (W/V) sodium azide.

Storage Conditions

-20°C

ADM Polyclonal Antibody - Protein Information**Name** ADM ([HGNC:259](#))**Synonyms** AM**Function**

Adrenomedullin/ADM and proadrenomedullin N-20 terminal peptide/PAMP are peptide hormones that act as potent hypotensive and vasodilator agents (PubMed:8387282, PubMed:9620797). Numerous actions have been reported most related to the physiologic control of fluid and electrolyte homeostasis. In the kidney, ADM is diuretic and natriuretic, and both ADM and PAMP inhibit aldosterone secretion by direct adrenal actions. In pituitary gland, both peptides at physiologically relevant doses inhibit basal ACTH secretion. Both peptides appear to act in brain and pituitary gland to facilitate the loss of plasma volume, actions which complement their hypotensive effects in blood vessels.

Cellular Location

Secreted.

Tissue Location

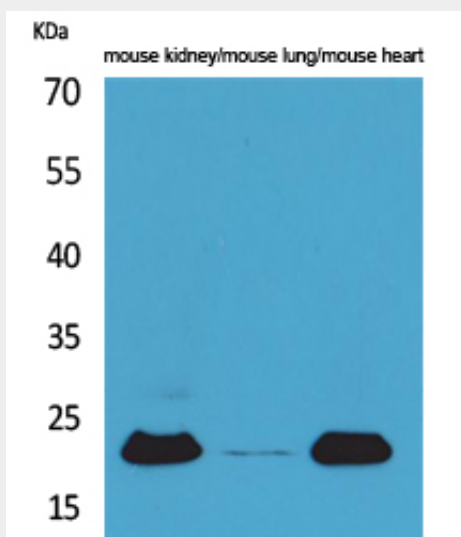
Highest levels found in pheochromocytoma and adrenal medulla. Also found in lung, ventricle and kidney tissues

ADM Polyclonal Antibody - Protocols

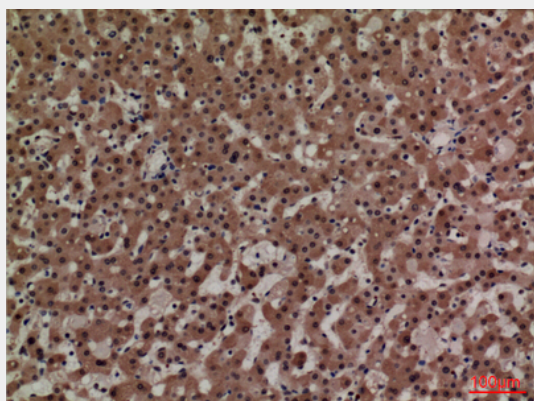
Provided below are standard protocols that you may find useful for product applications.

- [Western Blot](#)
- [Blocking Peptides](#)
- [Dot Blot](#)
- [Immunohistochemistry](#)
- [Immunofluorescence](#)
- [Immunoprecipitation](#)
- [Flow Cytometry](#)
- [Cell Culture](#)

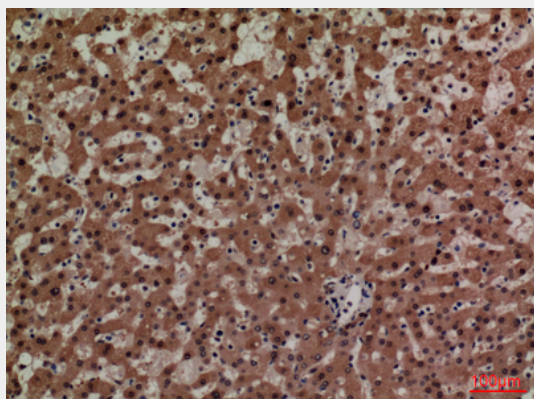
ADM Polyclonal Antibody - Images



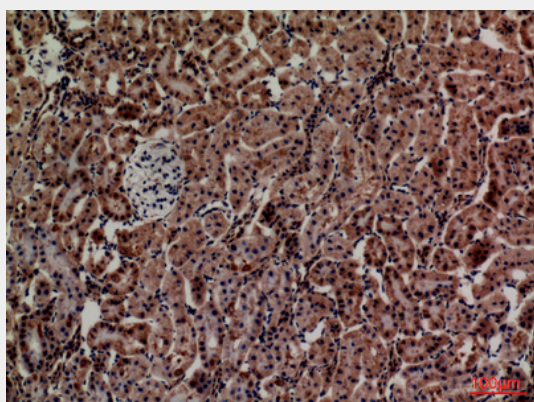
Western Blot analysis of mouse kidney, mouse lung, mouse heart cells using ADM Polyclonal Antibody.. Secondary antibody was diluted at 1:20000



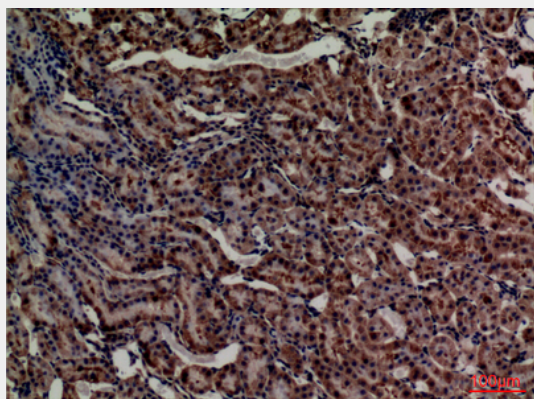
Immunohistochemical analysis of paraffin-embedded human-liver, antibody was diluted at 1:100



Immunohistochemical analysis of paraffin-embedded human-liver, antibody was diluted at 1:100



Immunohistochemical analysis of paraffin-embedded rat-kidney, antibody was diluted at 1:100



Immunohistochemical analysis of paraffin-embedded rat-kidney, antibody was diluted at 1:100

ADM Polyclonal Antibody - Background

AM and PAMP are potent hypotensive and vasodilator agents. Numerous actions have been reported most related to the physiologic control of fluid and electrolyte homeostasis. In the kidney, am is diuretic and natriuretic, and both am and pamp inhibit aldosterone secretion by direct adrenal actions. In pituitary gland, both peptides at physiologically relevant doses inhibit basal ACTH secretion. Both peptides appear to act in brain and pituitary gland to facilitate the loss of plasma volume, actions which complement their hypotensive effects in blood vessels.