

CPA4 Antibody (C-term)
Purified Rabbit Polyclonal Antibody (Pab)
Catalog # AP7338b**Specification**

CPA4 Antibody (C-term) - Product Information

Application	WB,E
Primary Accession	Q9UI42
Reactivity	Human
Host	Rabbit
Clonality	Polyclonal
Isotype	Rabbit IgG
Calculated MW	47351
Antigen Region	305-336

CPA4 Antibody (C-term) - Additional Information**Gene ID** 51200**Other Names**

Carboxypeptidase A4, 3417-, Carboxypeptidase A3, CPA4, CPA3

Target/Specificity

This CPA4 antibody is generated from rabbits immunized with a KLH conjugated synthetic peptide between 305-336 amino acids from the C-terminal region of human CPA4.

Dilution

WB~~1:1000

Format

Purified polyclonal antibody supplied in PBS with 0.09% (W/V) sodium azide. This antibody is prepared by Saturated Ammonium Sulfate (SAS) precipitation followed by dialysis against PBS.

Storage

Maintain refrigerated at 2-8°C for up to 2 weeks. For long term storage store at -20°C in small aliquots to prevent freeze-thaw cycles.

Precautions

CPA4 Antibody (C-term) is for research use only and not for use in diagnostic or therapeutic procedures.

CPA4 Antibody (C-term) - Protein Information**Name** CPA4**Synonyms** CPA3**Function** Metalloprotease that could be involved in the histone hyperacetylation pathway

(PubMed:[10383164](#)). Releases a C-terminal amino acid, with preference for -Phe, -Leu, -Ile, -Met, -Tyr and -Val (PubMed:[20385563](#)).

Cellular Location

Secreted.

Tissue Location

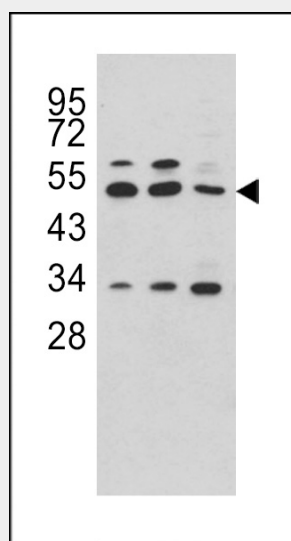
Fetal expression in the adrenal gland, brain, heart, intestine, kidney, liver and lung. Except for fetal brain that shows no imprinting, expression was found preferentially from the maternal allele

CPA4 Antibody (C-term) - Protocols

Provided below are standard protocols that you may find useful for product applications.

- [Western Blot](#)
- [Blocking Peptides](#)
- [Dot Blot](#)
- [Immunohistochemistry](#)
- [Immunofluorescence](#)
- [Immunoprecipitation](#)
- [Flow Cytometry](#)
- [Cell Culture](#)

CPA4 Antibody (C-term) - Images



Western blot analysis of CPA4 antibody (C-term) (Cat.#AP7338b) in Hela, CEM and NCI-H460 cell line lysates (35ug/lane). CPA4 (arrow) was detected using the purified Pab.

CPA4 Antibody (C-term) - Background

CPA4 is a member of the carboxypeptidase A/B subfamily. Carboxypeptidases are zinc-containing exopeptidases that catalyze the release of carboxy-terminal amino acids, and are synthesized as zymogens that are activated by proteolytic cleavage. This protein could be involved in the histone hyperacetylation pathway. It is imprinted and may be a strong candidate protein for prostate cancer aggressiveness.

CPA4 Antibody (C-term) - References

Ross,P.L., Cheng,I. BMC Cancer 9, 69 (2009)
Bentley,L., Nakabayashi,K. J. Med. Genet. 40 (4), 249-256 (2003)
Kayashima,T., Yamasaki,K. Hum. Genet. 112 (3), 220-226 (2003)
Hayashida,S., Yamasaki,K. Genomics 66 (2), 221-225 (2000)