

**P2X3 Polyclonal Antibody**  
**Catalog # AP73394****Specification**

---

**P2X3 Polyclonal Antibody - Product Information**

Application	WB, IHC-P
Primary Accession	<a href="#">P56373</a>
Reactivity	Human, Mouse, Rat
Host	Rabbit
Clonality	Polyclonal

**P2X3 Polyclonal Antibody - Additional Information****Gene ID** 5024**Other Names**

P2RX3; P2X purinoceptor 3; P2X3; ATP receptor; Purinergic receptor

**Dilution**

WB~~Western Blot: 1/500 - 1/2000. IHC-p: 1:100-300 ELISA: 1/20000. Not yet tested in other applications.

IHC-P~~N/A

**Format**

Liquid in PBS containing 50% glycerol, 0.5% BSA and 0.09% (W/V) sodium azide.

**Storage Conditions**

-20°C

**P2X3 Polyclonal Antibody - Protein Information****Name** P2RX3**Function**

Extracellular ATP-activated non-selective cation channel (PubMed:<a href="http://www.uniprot.org/citations/10440098" target="\_blank">10440098</a>, PubMed:<a href="http://www.uniprot.org/citations/27626375" target="\_blank">27626375</a>, PubMed:<a href="http://www.uniprot.org/citations/29674445" target="\_blank">29674445</a>, PubMed:<a href="http://www.uniprot.org/citations/31232692" target="\_blank">31232692</a>). Plays particularly important role in sensory neurons where its activation is critical for gustatory, nociceptive responses, visceral reflexes and sensory hypersensitization (By similarity).

**Cellular Location**

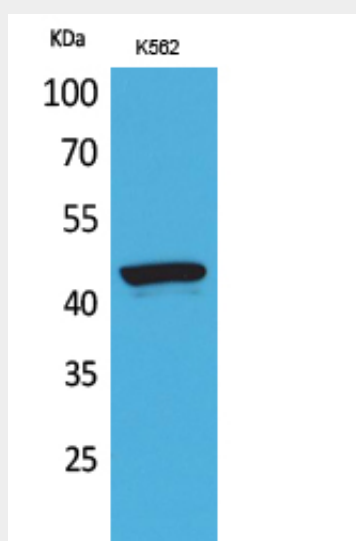
Cell membrane; Multi-pass membrane protein Note=Localizes to neuronal cell body of sensory neurons {ECO:0000250|UniProtKB:P49654}

## P2X3 Polyclonal Antibody - Protocols

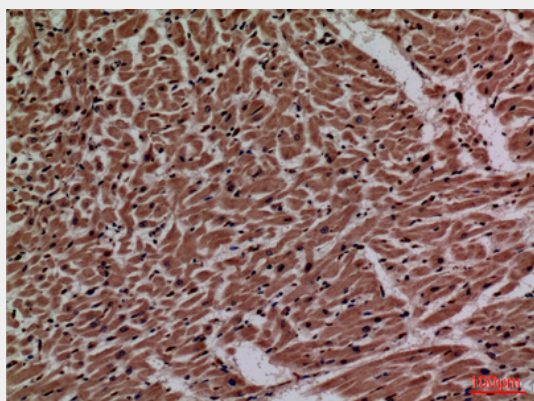
Provided below are standard protocols that you may find useful for product applications.

- [Western Blot](#)
- [Blocking Peptides](#)
- [Dot Blot](#)
- [Immunohistochemistry](#)
- [Immunofluorescence](#)
- [Immunoprecipitation](#)
- [Flow Cytometry](#)
- [Cell Culture](#)

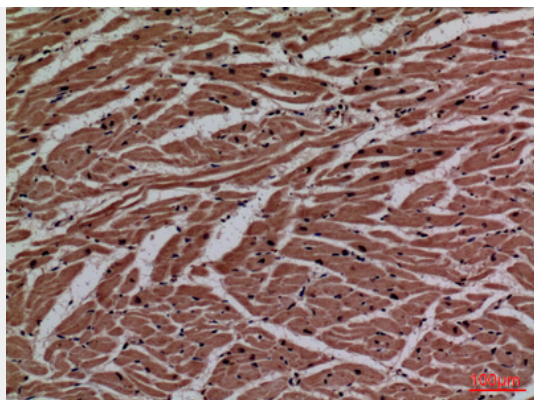
## P2X3 Polyclonal Antibody - Images



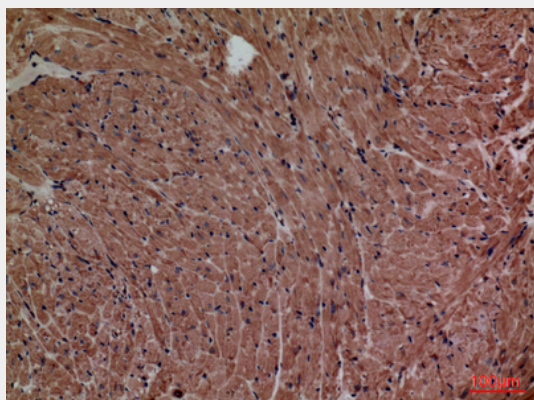
Western Blot analysis of K562 cells using P2X3 Polyclonal Antibody.. Secondary antibody was diluted at 1:20000



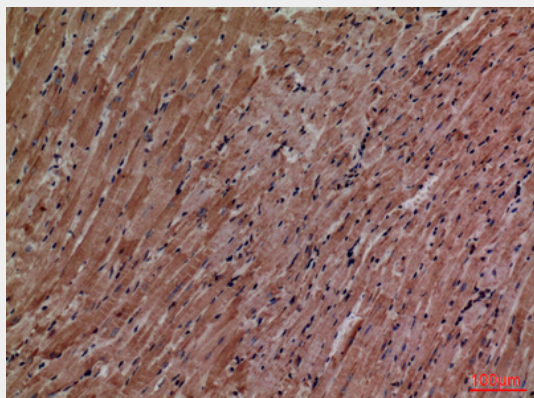
Immunohistochemical analysis of paraffin-embedded human-heart, antibody was diluted at 1:100



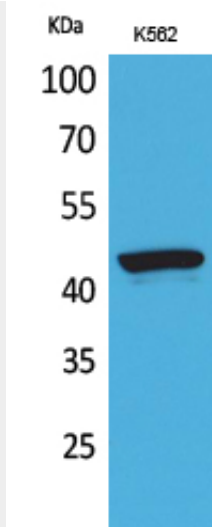
Immunohistochemical analysis of paraffin-embedded human-heart, antibody was diluted at 1:100



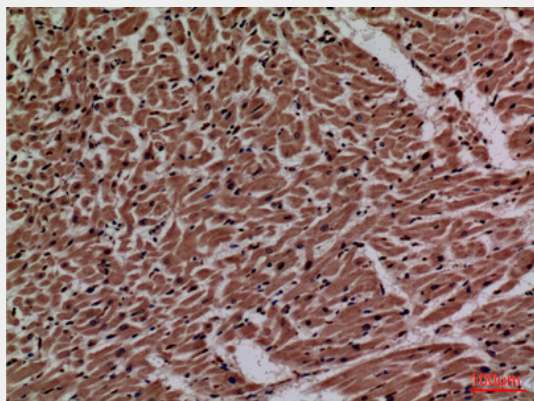
Immunohistochemical analysis of paraffin-embedded mouse-heart, antibody was diluted at 1:100



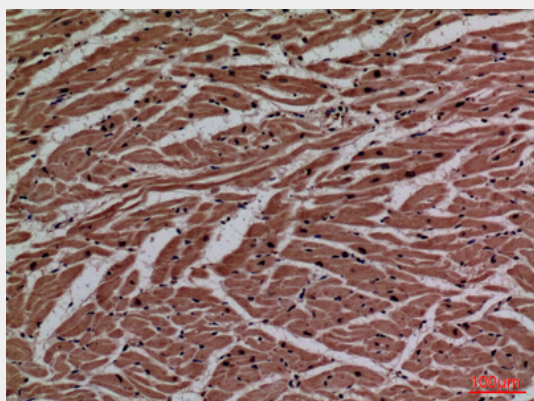
Immunohistochemical analysis of paraffin-embedded mouse-heart, antibody was diluted at 1:100



Western Blot analysis of K562 cells using P2X3 Polyclonal Antibody.. Secondary antibody was diluted at 1:20000

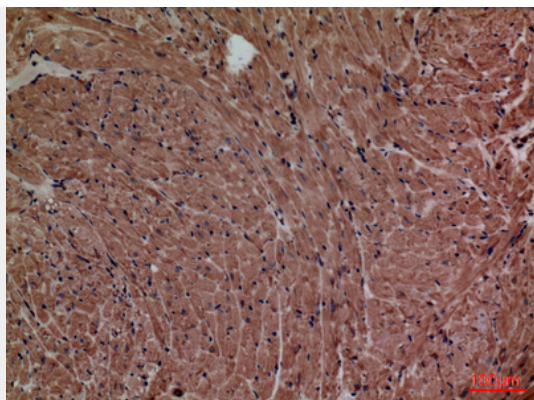


Immunohistochemical analysis of paraffin-embedded human-heart, antibody was diluted at 1:100

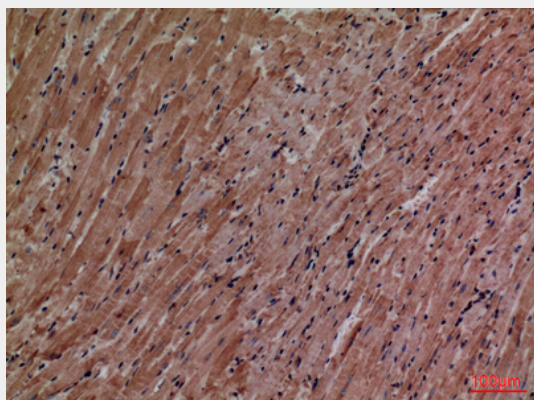


Immunohistochemical analysis of paraffin-embedded human-heart, antibody was diluted at 1:100





Immunohistochemical analysis of paraffin-embedded mouse-heart, antibody was diluted at 1:100



Immunohistochemical analysis of paraffin-embedded mouse-heart, antibody was diluted at 1:100

#### **P2X3 Polyclonal Antibody - Background**

Receptor for ATP that acts as a ligand-gated cation channel (PubMed:27626375). Plays a role in sensory perception. Required for normal perception of pain. Required for normal taste perception (By similarity).