

**Kallistatin Polyclonal Antibody**  
**Catalog # AP73399****Specification**

---

**Kallistatin Polyclonal Antibody - Product Information**

Application	WB, IHC-P
Primary Accession	<a href="#">P29622</a>
Reactivity	Human
Host	Rabbit
Clonality	Polyclonal

**Kallistatin Polyclonal Antibody - Additional Information****Gene ID** 5267**Other Names**

SERPINA4; KST; PI4; Kallistatin; Kallikrein inhibitor; Peptidase inhibitor 4; PI-4; Serpin A4

**Dilution**

WB~~Western Blot: 1/500 - 1/2000. IHC-p: 1:100-300 ELISA: 1/20000. Not yet tested in other applications.

IHC-P~~N/A

**Format**

Liquid in PBS containing 50% glycerol, 0.5% BSA and 0.09% (W/V) sodium azide.

**Storage Conditions**

-20°C

**Kallistatin Polyclonal Antibody - Protein Information****Name** SERPINA4**Synonyms** KST, PI4**Function**

Inhibits human amidolytic and kininogenase activities of tissue kallikrein. Inhibition is achieved by formation of an equimolar, heat- and SDS-stable complex between the inhibitor and the enzyme, and generation of a small C-terminal fragment of the inhibitor due to cleavage at the reactive site by tissue kallikrein.

**Cellular Location**

Secreted.

**Tissue Location**

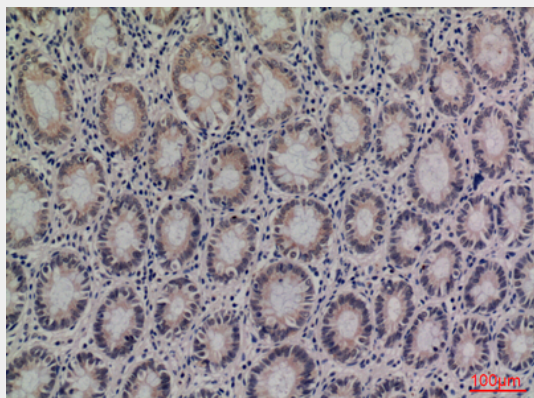
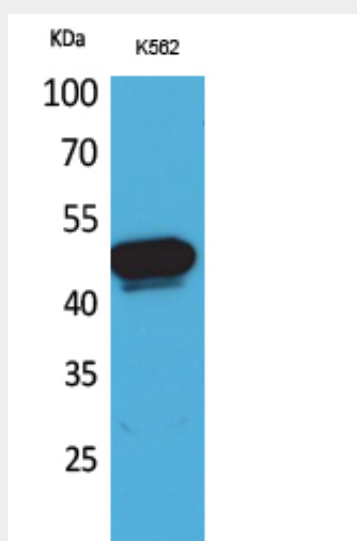
Expressed by the liver and secreted in plasma.

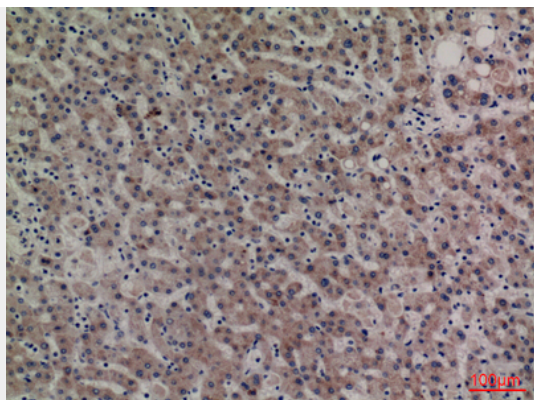
## Kallistatin Polyclonal Antibody - Protocols

Provided below are standard protocols that you may find useful for product applications.

- [Western Blot](#)
- [Blocking Peptides](#)
- [Dot Blot](#)
- [Immunohistochemistry](#)
- [Immunofluorescence](#)
- [Immunoprecipitation](#)
- [Flow Cytometry](#)
- [Cell Culture](#)

## Kallistatin Polyclonal Antibody - Images





### **Kallistatin Polyclonal Antibody - Background**

Inhibits human amidolytic and kininogenase activities of tissue kallikrein. Inhibition is achieved by formation of an equimolar, heat- and SDS-stable complex between the inhibitor and the enzyme, and generation of a small C-terminal fragment of the inhibitor due to cleavage at the reactive site by tissue kallikrein.