

ERp57 Polyclonal Antibody
Catalog # AP73403**Specification****ERp57 Polyclonal Antibody - Product Information**

Application	WB, IHC-P
Primary Accession	P30101
Reactivity	Human, Mouse, Rat
Host	Rabbit
Clonality	Polyclonal

ERp57 Polyclonal Antibody - Additional Information

Gene ID 2923

Other Names

PDIA3; ERP57; ERP60; GRP58; Protein disulfide-isomerase A3; 58 kDa glucose-regulated protein; 58 kDa microsomal protein; p58; Disulfide isomerase ER-60; Endoplasmic reticulum resident protein 57; ER protein 57; ERp57; Endoplasmic reticulum resident protein 60; ER protein 60; ERp60

Dilution

WB~~Western Blot: 1/500 - 1/2000. IHC-p: 1:100-300 ELISA: 1/20000. Not yet tested in other applications.
IHC-P~~N/A

Format

Liquid in PBS containing 50% glycerol, 0.5% BSA and 0.09% (W/V) sodium azide.

Storage Conditions

-20°C

ERp57 Polyclonal Antibody - Protein InformationName PDIA3 ([HGNC:4606](#))

Synonyms ERP57, ERP60, GRP58

Function

Protein disulfide isomerase that catalyzes the formation, isomerization, and reduction or oxidation of disulfide bonds in client proteins and functions as a protein folding chaperone (PubMed: 11825568, PubMed: 16193070, PubMed: 27897272, PubMed: 36104323, PubMed: 7487104). Core component of the major histocompatibility complex class I (MHC I) peptide loading complex where it functions as an essential folding chaperone for TAPBP. Through TAPBP, assists the dynamic assembly of the MHC I complex with high affinity antigens in the endoplasmic reticulum.

Therefore, plays a crucial role in the presentation of antigens to cytotoxic T cells in adaptive immunity (PubMed:35948544, PubMed:36104323).

Cellular Location

Endoplasmic reticulum. Endoplasmic reticulum lumen {ECO:0000250|UniProtKB:P11598}. Melanosome Note=Identified by mass spectrometry in melanosome fractions from stage I to stage IV (PubMed:12643545).

Tissue Location

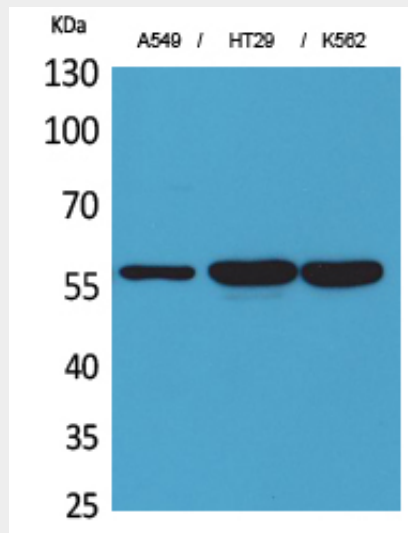
Detected in the flagellum and head region of spermatozoa (at protein level) (PubMed:20400973). Expressed in liver, stomach and colon (at protein level). Expressed in gastric parietal cells and chief cells (at protein level) (PubMed:24188822)

ERp57 Polyclonal Antibody - Protocols

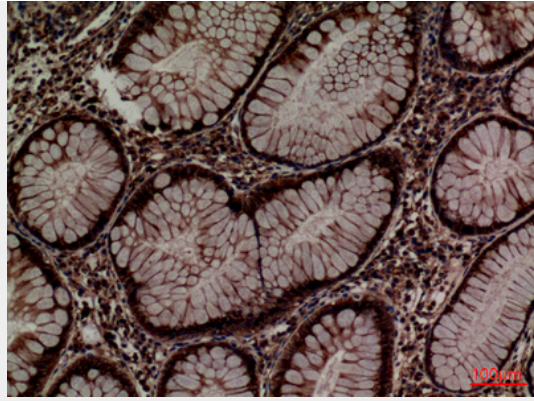
Provided below are standard protocols that you may find useful for product applications.

- [Western Blot](#)
- [Blocking Peptides](#)
- [Dot Blot](#)
- [Immunohistochemistry](#)
- [Immunofluorescence](#)
- [Immunoprecipitation](#)
- [Flow Cytometry](#)
- [Cell Culture](#)

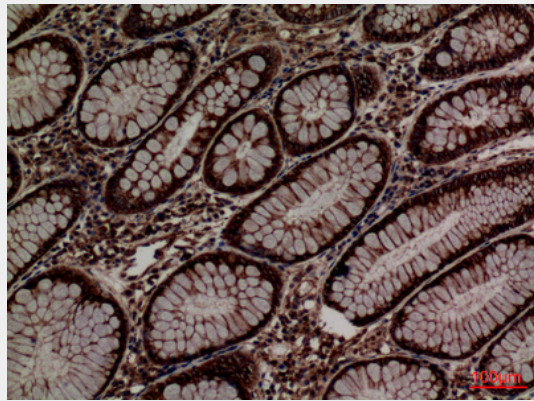
ERp57 Polyclonal Antibody - Images



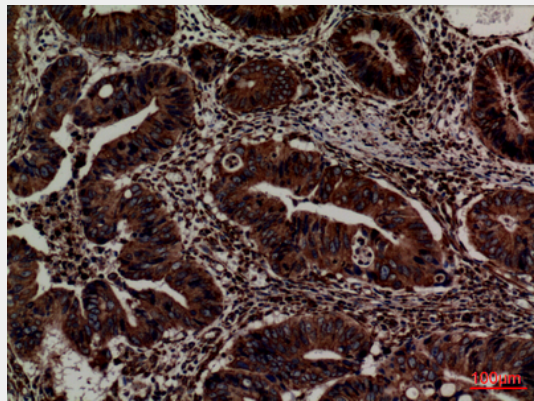
Western Blot analysis of A549, HT29, K562 cells using ERp57 Polyclonal Antibody.. Secondary antibody was diluted at 1:20000



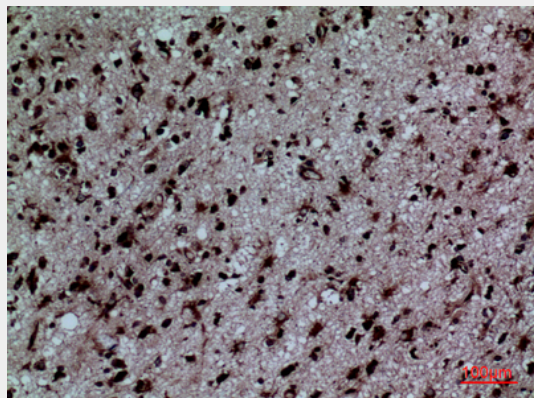
Immunohistochemical analysis of paraffin-embedded human-colon, antibody was diluted at 1:100



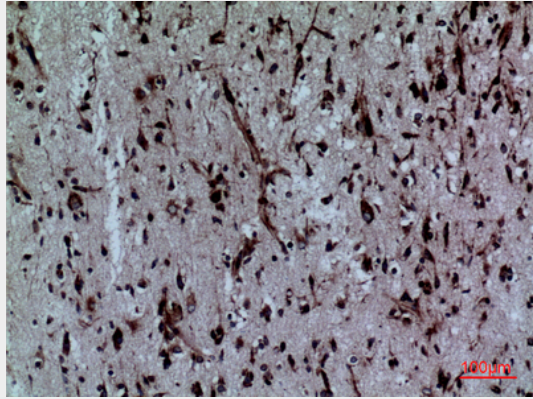
Immunohistochemical analysis of paraffin-embedded human-colon, antibody was diluted at 1:100



Immunohistochemical analysis of paraffin-embedded human-colon, antibody was diluted at 1:100



Immunohistochemical analysis of paraffin-embedded human-brain, antibody was diluted at 1:100



Immunohistochemical analysis of paraffin-embedded human-brain, antibody was diluted at 1:100