

SPTLC1 Polyclonal Antibody
Catalog # AP73415**Specification****SPTLC1 Polyclonal Antibody - Product Information**

| | |
|-------------------|------------------------|
| Application | WB, IHC-P |
| Primary Accession | O15269 |
| Reactivity | Human, Mouse, Rat |
| Host | Rabbit |
| Clonality | Polyclonal |

SPTLC1 Polyclonal Antibody - Additional Information**Gene ID** 10558**Other Names**

SPTLC1; LCB1; Serine palmitoyltransferase 1; Long chain base biosynthesis protein 1; LCB 1; Serine-palmitoyl-CoA transferase 1; SPT 1; SPT1

Dilution

WB~~Western Blot: 1/500 - 1/2000. IHC-p: 1:100-300 ELISA: 1/20000. Not yet tested in other applications.

IHC-P~~N/A

Format

Liquid in PBS containing 50% glycerol, 0.5% BSA and 0.09% (W/V) sodium azide.

Storage Conditions

-20°C

SPTLC1 Polyclonal Antibody - Protein Information**Name** SPTLC1**Synonyms** LCB1**Function**

Component of the serine palmitoyltransferase multisubunit enzyme (SPT) that catalyzes the initial and rate-limiting step in sphingolipid biosynthesis by condensing L-serine and activated acyl-CoA (most commonly palmitoyl-CoA) to form long-chain bases. The SPT complex is also composed of SPTLC2 or SPTLC3 and SPTSSA or SPTSSB. Within this complex, the heterodimer with SPTLC2 or SPTLC3 forms the catalytic core (PubMed:19416851, PubMed:33558762, PubMed:36170811). The composition of the serine palmitoyltransferase (SPT) complex determines the substrate preference (PubMed:19416851, PubMed:33558762). The

SPTLC1-SPTLC2-SPTSSA complex shows a strong preference for C16-CoA substrate, while the SPTLC1-SPTLC3-SPTSSA isozyme uses both C14-CoA and C16-CoA as substrates, with a slight preference for C14-CoA (PubMed:19416851, PubMed:19648650). The SPTLC1-SPTLC2-SPTSSB complex shows a strong preference for C18-CoA substrate, while the SPTLC1-SPTLC3-SPTSSB isozyme displays an ability to use a broader range of acyl-CoAs, without apparent preference (PubMed:19416851, PubMed:19648650, PubMed:33558761, PubMed:33558762). Required for adipocyte cell viability and metabolic homeostasis (By similarity).

Cellular Location

Endoplasmic reticulum membrane; Single-pass membrane protein
{ECO:0000250|UniProtKB:O35704}

Tissue Location

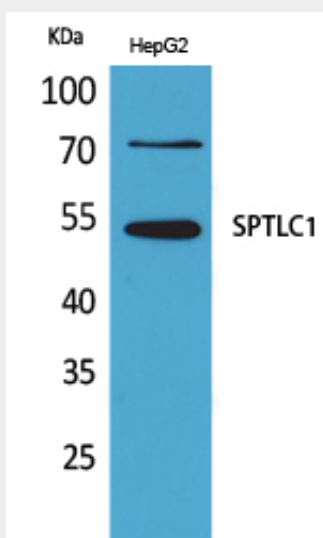
Widely expressed. Not detected in small intestine.

SPTLC1 Polyclonal Antibody - Protocols

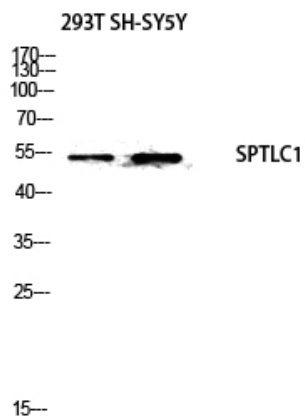
Provided below are standard protocols that you may find useful for product applications.

- [Western Blot](#)
- [Blocking Peptides](#)
- [Dot Blot](#)
- [Immunohistochemistry](#)
- [Immunofluorescence](#)
- [Immunoprecipitation](#)
- [Flow Cytometry](#)
- [Cell Culture](#)

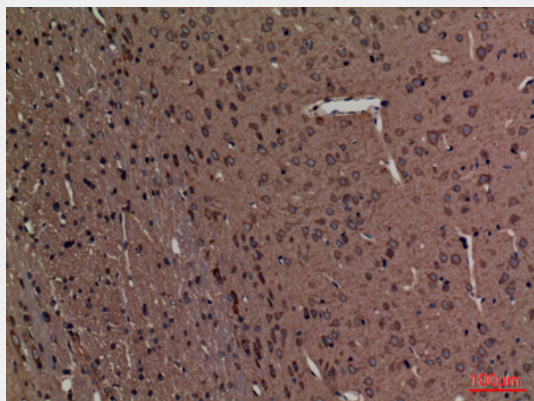
SPTLC1 Polyclonal Antibody - Images



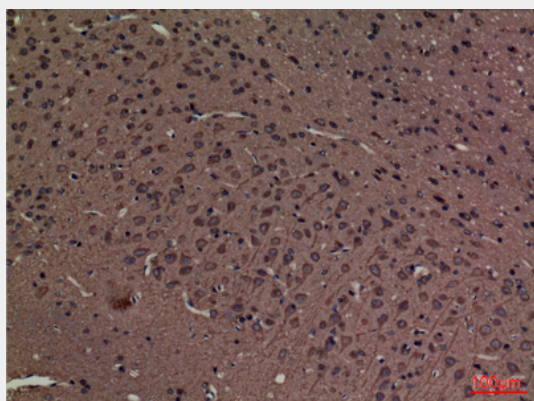
Western Blot analysis of HepG2 cells using SPTLC1 Polyclonal Antibody. Antibody was diluted at 1:500. Secondary antibody was diluted at 1:20000



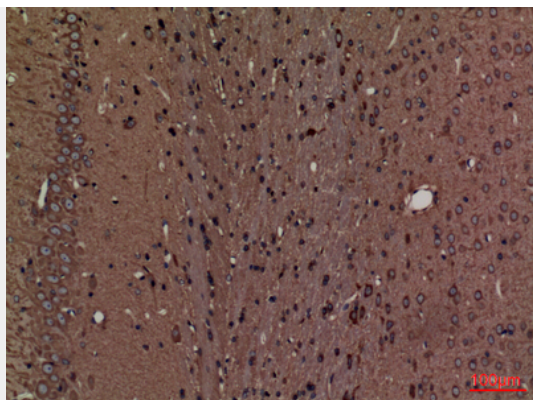
Western blot analysis of 293T SH-SY5Y lysis using SPTLC1 antibody. Antibody was diluted at 1:500. Secondary antibody was diluted at 1:20000



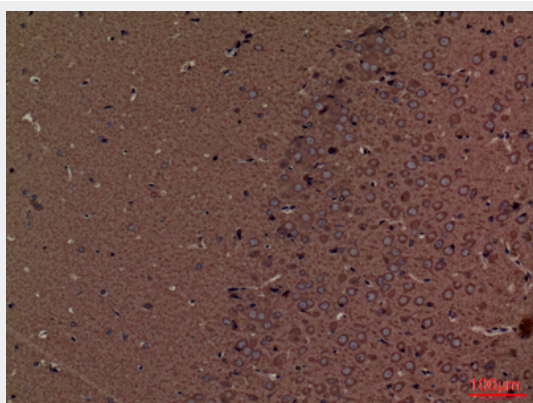
Immunohistochemical analysis of paraffin-embedded rat-brain, antibody was diluted at 1:100



Immunohistochemical analysis of paraffin-embedded rat-brain, antibody was diluted at 1:100



Immunohistochemical analysis of paraffin-embedded rat-brain, antibody was diluted at 1:100



Immunohistochemical analysis of paraffin-embedded mouse-brain, antibody was diluted at 1:100

SPTLC1 Polyclonal Antibody - Background

Serine palmitoyltransferase (SPT) (PubMed:19416851). The heterodimer formed with SPTLC2 or SPTLC3 constitutes the catalytic core (PubMed:19416851). The composition of the serine palmitoyltransferase (SPT) complex determines the substrate preference (PubMed:19416851). The SPTLC1-SPTLC2-SPTSSA complex shows a strong preference for C16-CoA substrate, while the SPTLC1- SPTLC3-SPTSSA isozyme uses both C14-CoA and C16-CoA as substrates, with a slight preference for C14-CoA (PubMed:19416851). The SPTLC1-SPTLC2-SPTSSB complex shows a strong preference for C18-CoA substrate, while the SPTLC1-SPTLC3-SPTSSB isozyme displays an ability to use a broader range of acyl-CoAs, without apparent preference (PubMed:19416851). Required for adipocyte cell viability and metabolic homeostasis (By similarity).