

**CD58 Polyclonal Antibody**  
**Catalog # AP73434****Specification**

---

**CD58 Polyclonal Antibody - Product Information**

Application	<b>WB, IHC-P</b>
Primary Accession	<a href="#">P19256</a>
Reactivity	<b>Human</b>
Host	<b>Rabbit</b>
Clonality	<b>Polyclonal</b>

**CD58 Polyclonal Antibody - Additional Information****Gene ID** 965**Other Names**

CD58; LFA3; Lymphocyte function-associated antigen 3; Ag3; Surface glycoprotein LFA-3; CD58

**Dilution**

WB~~Western Blot: 1/500 - 1/2000. IHC-p: 1:100-300 ELISA: 1/20000. Not yet tested in other applications.

IHC-P~~N/A

**Format**

Liquid in PBS containing 50% glycerol, 0.5% BSA and 0.09% (W/V) sodium azide.

**Storage Conditions**

-20°C

**CD58 Polyclonal Antibody - Protein Information****Name** CD58**Synonyms** LFA3**Function**

Ligand of the T-lymphocyte CD2 glycoprotein. This interaction is important in mediating thymocyte interactions with thymic epithelial cells, antigen-independent and -dependent interactions of T-lymphocytes with target cells and antigen-presenting cells and the T-lymphocyte rosetting with erythrocytes. In addition, the LFA-3/CD2 interaction may prime response by both the CD2+ and LFA-3+ cells.

**Cellular Location**

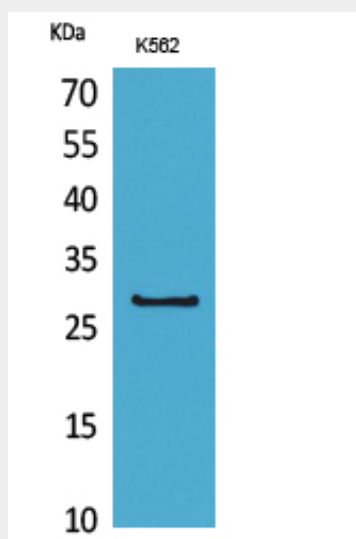
[Isoform 1]: Cell membrane; Single-pass type I membrane protein

**CD58 Polyclonal Antibody - Protocols**

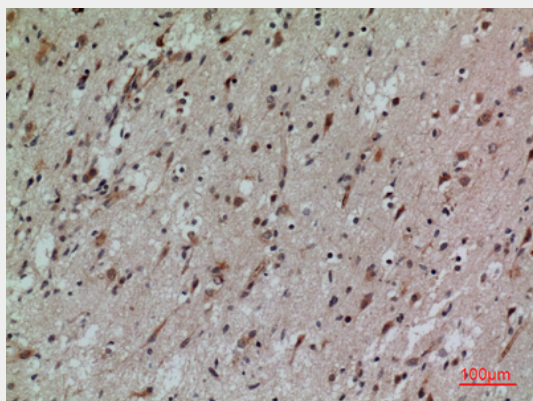
Provided below are standard protocols that you may find useful for product applications.

- [Western Blot](#)
- [Blocking Peptides](#)
- [Dot Blot](#)
- [Immunohistochemistry](#)
- [Immunofluorescence](#)
- [Immunoprecipitation](#)
- [Flow Cytometry](#)
- [Cell Culture](#)

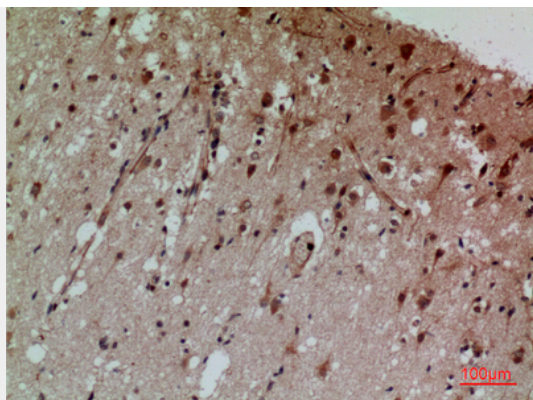
#### CD58 Polyclonal Antibody - Images



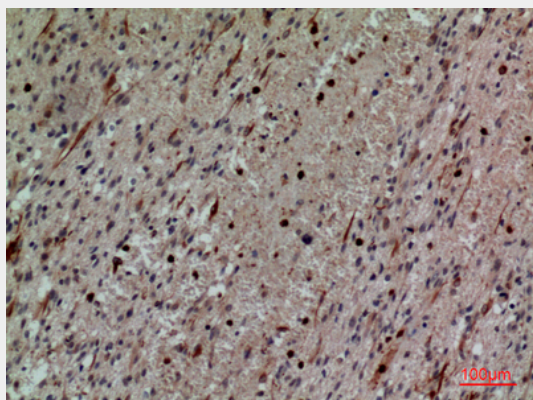
Western Blot analysis of K562 cells using CD58 Polyclonal Antibody.. Secondary antibody was diluted at 1:20000



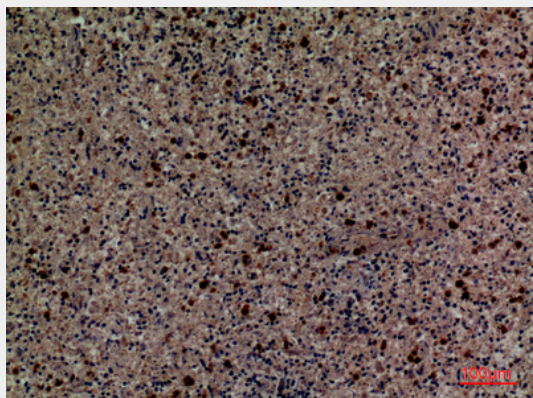
Immunohistochemical analysis of paraffin-embedded human-brain, antibody was diluted at 1:100



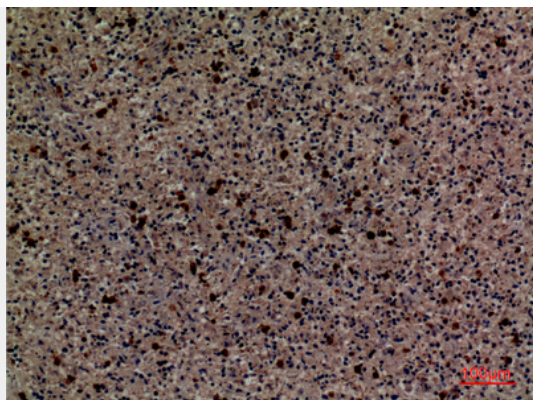
Immunohistochemical analysis of paraffin-embedded human-brain, antibody was diluted at 1:100



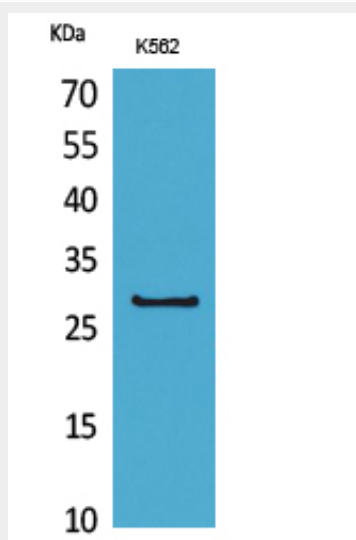
Immunohistochemical analysis of paraffin-embedded human-brain, antibody was diluted at 1:100



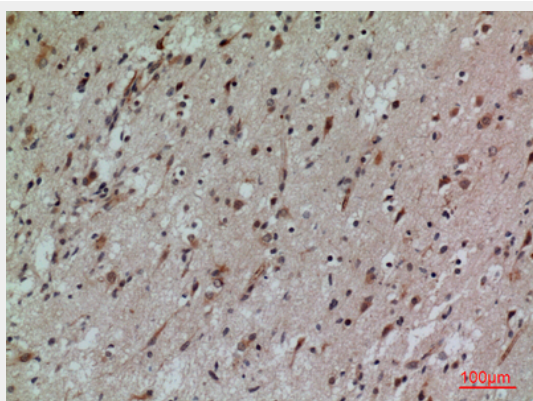
Immunohistochemical analysis of paraffin-embedded human-spleen, antibody was diluted at 1:100



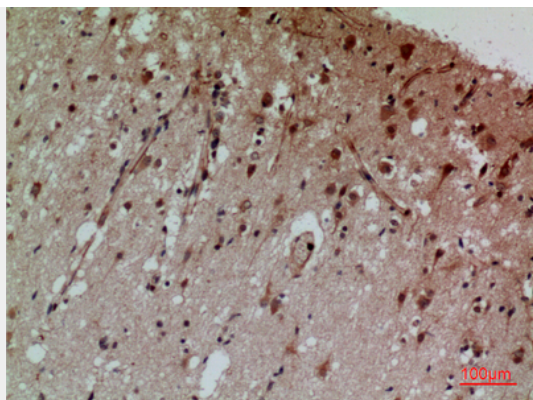
Immunohistochemical analysis of paraffin-embedded human-spleen, antibody was diluted at 1:100



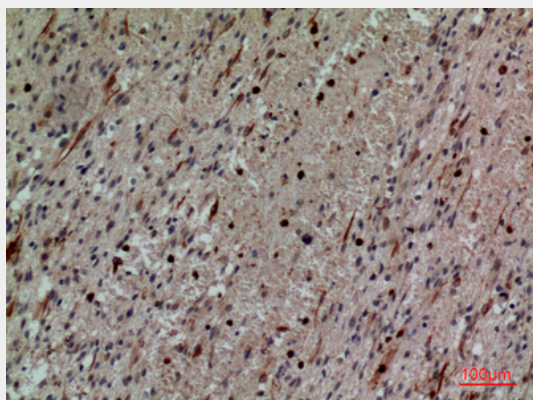
Western Blot analysis of K562 cells using CD58 Polyclonal Antibody.. Secondary antibody was diluted at 1:20000



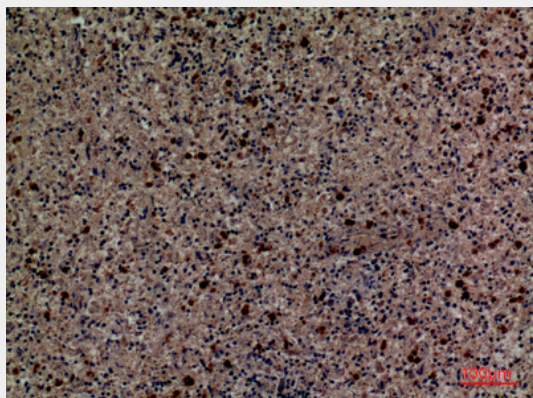
Immunohistochemical analysis of paraffin-embedded human-brain, antibody was diluted at 1:100



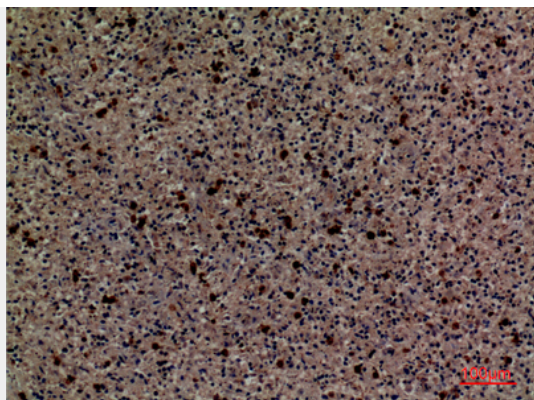
Immunohistochemical analysis of paraffin-embedded human-brain, antibody was diluted at 1:100



Immunohistochemical analysis of paraffin-embedded human-brain, antibody was diluted at 1:100



Immunohistochemical analysis of paraffin-embedded human-spleen, antibody was diluted at 1:100



Immunohistochemical analysis of paraffin-embedded human-spleen, antibody was diluted at 1:100

#### **CD58 Polyclonal Antibody - Background**

Ligand of the T-lymphocyte CD2 glycoprotein. This interaction is important in mediating thymocyte interactions with thymic epithelial cells, antigen-independent and -dependent interactions of T-lymphocytes with target cells and antigen-presenting cells and the T-lymphocyte rosetting with erythrocytes. In addition, the LFA-3/CD2 interaction may prime response by both the CD2+ and LFA-3+ cells.