

CD248 Polyclonal Antibody
Catalog # AP73450**Specification**

CD248 Polyclonal Antibody - Product Information

Application	WB
Primary Accession	Q9HCU0
Reactivity	Human
Host	Rabbit
Clonality	Polyclonal

CD248 Polyclonal Antibody - Additional Information**Gene ID** 57124**Other Names**

CD248; CD164L1; TEM1; Endosialin; Tumor endothelial marker 1; CD248

Dilution

WB~~Western Blot: 1/500 - 1/2000. ELISA: 1/20000. Not yet tested in other applications.

Format

Liquid in PBS containing 50% glycerol, 0.5% BSA and 0.09% (W/V) sodium azide.

Storage Conditions

-20°C

CD248 Polyclonal Antibody - Protein Information**Name** CD248**Synonyms** CD164L1, TEM1**Function**

Cell surface glycoprotein involved in various biological processes including angiogenesis, immune response modulation, and tissue remodeling and repair. Participates in pericyte proliferation through positive modulation of the PDGF receptor signaling pathway (PubMed:20484976). Acts as a scaffold for factor X, triggering allosteric changes and the spatial re-alignment of factor X with the TF-factor VIIa complex, thereby enhancing coagulation activation. Modulates the insulin signaling pathway by interacting with insulin receptor/INSR and by diminishing its capacity to be autophosphorylated in response to insulin. Also regulates LPS-induced inflammatory response in macrophages by favoring the production of proinflammatory cytokines. In human, negatively regulates T-cell proliferation compared with stromal cells where it increases proliferation (PubMed:21466550).

Cellular Location

Membrane; Single-pass type I membrane protein

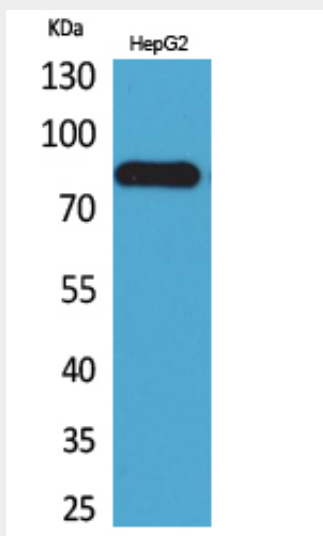
Tissue Location

Expressed in tumor endothelial cells but absent or barely detectable in normal endothelial cells. Expressed in metastatic lesions of the liver and during angiogenesis of corpus luteum formation and wound healing. Expressed in vascular endothelial cells of malignant tumors but not in normal blood vessels. Expressed in stromal fibroblasts. Strongly expressed in pericytes (PubMed:20484976) Expressed on stromal cells and cells with lymphoid morphology such as T- cells (PubMed:21466550).

CD248 Polyclonal Antibody - Protocols

Provided below are standard protocols that you may find useful for product applications.

- [Western Blot](#)
- [Blocking Peptides](#)
- [Dot Blot](#)
- [Immunohistochemistry](#)
- [Immunofluorescence](#)
- [Immunoprecipitation](#)
- [Flow Cytometry](#)
- [Cell Culture](#)

CD248 Polyclonal Antibody - Images**CD248 Polyclonal Antibody - Background**

May play a role in tumor angiogenesis.