

**Lymphotactin Polyclonal Antibody**  
**Catalog # AP73490****Specification**

---

**Lymphotactin Polyclonal Antibody - Product Information**

Application	WB, IHC-P
Primary Accession	<a href="#">P47992</a>
Reactivity	Human
Host	Rabbit
Clonality	Polyclonal

**Lymphotactin Polyclonal Antibody - Additional Information****Gene ID** 6375**Other Names**

XCL1; LTN; SCYC1; Lymphotactin; ATAC; C motif chemokine 1; Cytokine SCM-1; Lymphotaxin; SCM-1-alpha; Small-inducible cytokine C1; XC chemokine ligand 1; XCL2; SCYC2; Cytokine SCM-1 beta; C motif chemokine 2; XC chemokine ligand 2

**Dilution**

WB~~Western Blot: 1/500 - 1/2000. IHC-p: 1/100-1/300. ELISA: 1/20000. Not yet tested in other applications.  
IHC-P~~N/A

**Format**

Liquid in PBS containing 50% glycerol, 0.5% BSA and 0.09% (W/V) sodium azide.

**Storage Conditions**

-20°C

**Lymphotactin Polyclonal Antibody - Protein Information****Name** XCL1**Synonyms** LTN, SCYC1**Function**

Chemotactic activity for lymphocytes but not for monocytes or neutrophils. In thymus, mediates medullary accumulation of thymic dendritic cells and contributes to regulatory T cell development, playing a role in self-tolerance establishment.

**Cellular Location**

Secreted.

**Tissue Location**

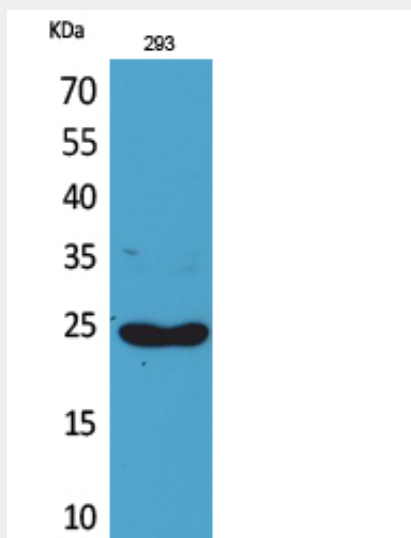
Highest level in spleen, lower in peripheral leukocytes and very low levels in lung, colon and small intestine

## Lymphotactin Polyclonal Antibody - Protocols

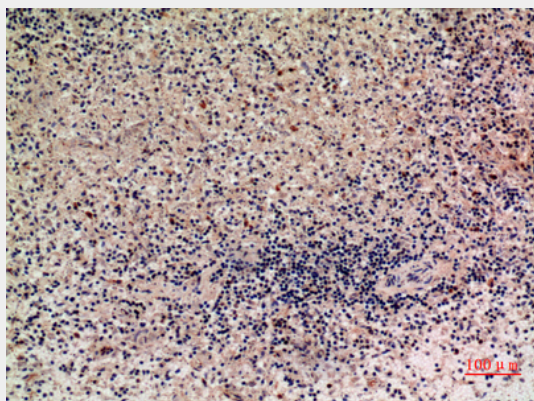
Provided below are standard protocols that you may find useful for product applications.

- [Western Blot](#)
- [Blocking Peptides](#)
- [Dot Blot](#)
- [Immunohistochemistry](#)
- [Immunofluorescence](#)
- [Immunoprecipitation](#)
- [Flow Cytometry](#)
- [Cell Culture](#)

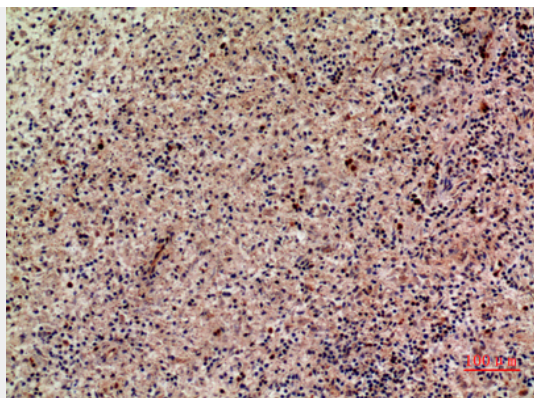
## Lymphotactin Polyclonal Antibody - Images



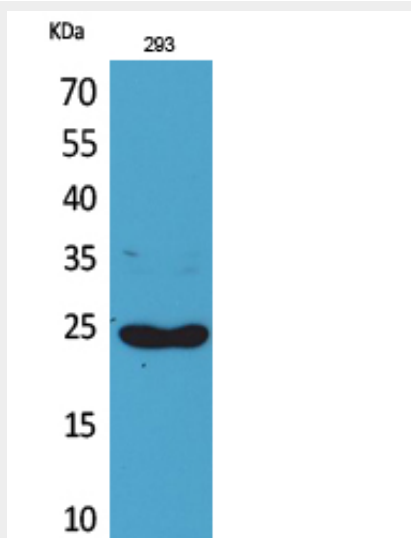
Western Blot analysis of 293 cells using Lymphotactin Polyclonal Antibody.. Secondary antibody was diluted at 1:20000



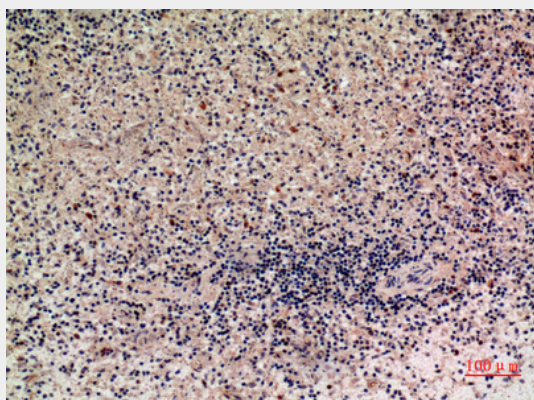
Immunohistochemical analysis of paraffin-embedded human-liver, antibody was diluted at 1:100



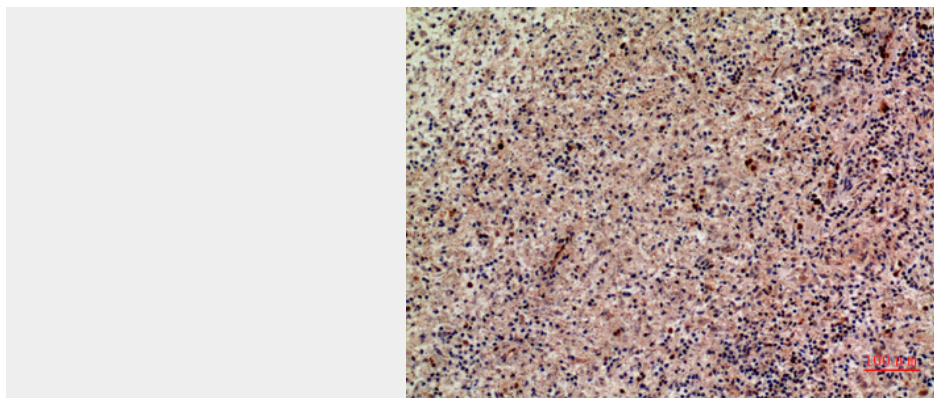
Immunohistochemical analysis of paraffin-embedded human-liver, antibody was diluted at 1:100



Western Blot analysis of 293 cells using Lymphotactin Polyclonal Antibody.. Secondary antibody was diluted at 1:20000



Immunohistochemical analysis of paraffin-embedded human-liver, antibody was diluted at 1:100



Immunohistochemical analysis of paraffin-embedded human-liver, antibody was diluted at 1:100

### **Lymphotactin Polyclonal Antibody - Background**

Chemotactic activity for lymphocytes but not for monocytes or neutrophils. In thymus, mediates medullary accumulation of thymic dendritic cells and contributes to regulatory T cell development, playing a role in self-tolerance establishment.