

**E2F-4 Polyclonal Antibody**  
**Catalog # AP73505****Specification**

---

**E2F-4 Polyclonal Antibody - Product Information**

Application	WB, IHC-P
Primary Accession	<a href="#">Q16254</a>
Reactivity	Human, Mouse, Rat
Host	Rabbit
Clonality	Polyclonal

**E2F-4 Polyclonal Antibody - Additional Information****Gene ID** 1874**Other Names**

E2F4; Transcription factor E2F4; E2F-4

**Dilution**

WB~~Western Blot: 1/500 - 1/2000. IHC-p: 1/100-1/300. ELISA: 1/20000. Not yet tested in other applications.

IHC-P~~N/A

**Format**

Liquid in PBS containing 50% glycerol, 0.5% BSA and 0.09% (W/V) sodium azide.

**Storage Conditions**

-20°C

**E2F-4 Polyclonal Antibody - Protein Information****Name** E2F4**Function**

Transcription activator that binds DNA cooperatively with DP proteins through the E2 recognition site, 5'-TTTC[CG]CGC-3' found in the promoter region of a number of genes whose products are involved in cell cycle regulation or in DNA replication. The DRTF1/E2F complex functions in the control of cell-cycle progression from G1 to S phase. E2F4 binds with high affinity to RBL1 and RBL2. In some instances can also bind RB1. Specifically required for multiciliate cell differentiation: together with MCIDAS and E2F5, binds and activate genes required for centriole biogenesis.

**Cellular Location**

Nucleus.

**Tissue Location**

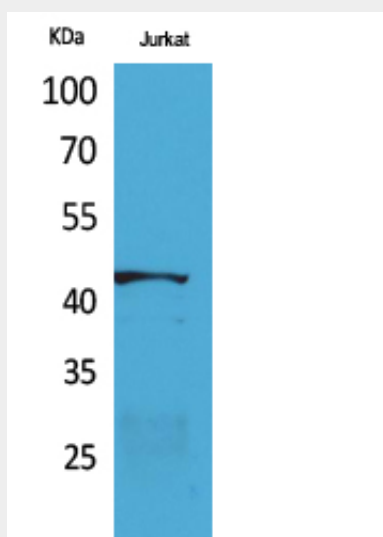
Found in all tissue examined including heart, brain, placenta, lung, liver, skeletal muscle, kidney and pancreas

## E2F-4 Polyclonal Antibody - Protocols

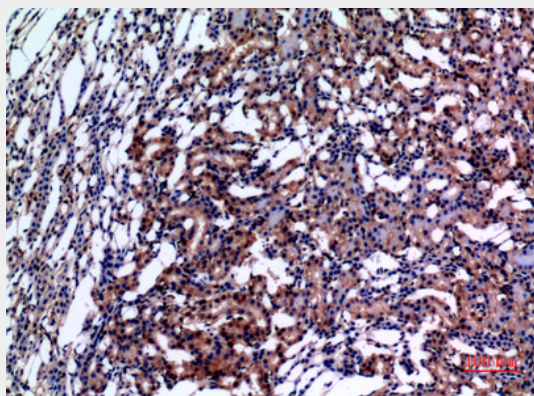
Provided below are standard protocols that you may find useful for product applications.

- [Western Blot](#)
- [Blocking Peptides](#)
- [Dot Blot](#)
- [Immunohistochemistry](#)
- [Immunofluorescence](#)
- [Immunoprecipitation](#)
- [Flow Cytometry](#)
- [Cell Culture](#)

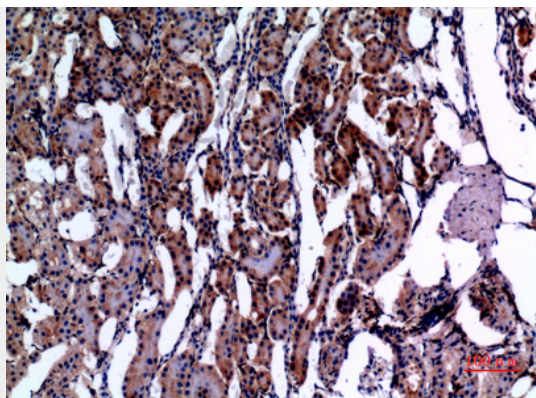
## E2F-4 Polyclonal Antibody - Images



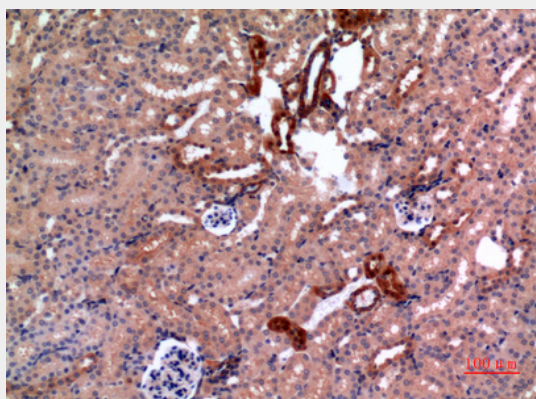
Western Blot analysis of Jurkat cells using E2F-4 Polyclonal Antibody.. Secondary antibody was diluted at 1:20000 cells nucleus extracted by Minute TM Cytoplasmic and Nuclear Fractionation kit (SC-003, Invent biotech, MN, USA).



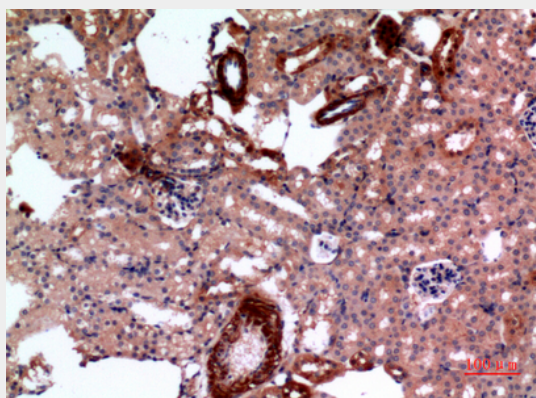
Immunohistochemical analysis of paraffin-embedded rat-kidney, antibody was diluted at 1:100



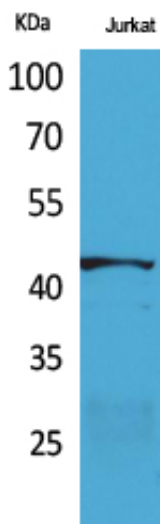
Immunohistochemical analysis of paraffin-embedded rat-kidney, antibody was diluted at 1:100



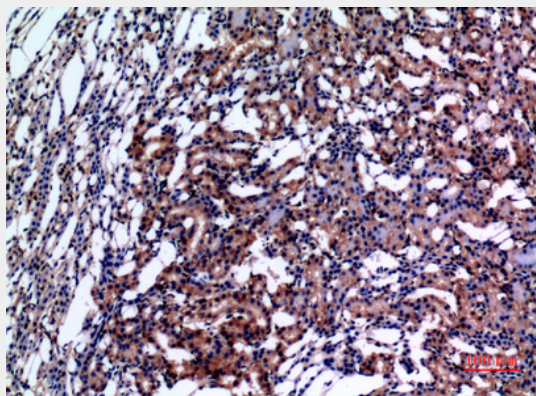
Immunohistochemical analysis of paraffin-embedded mouse-kidney, antibody was diluted at 1:100



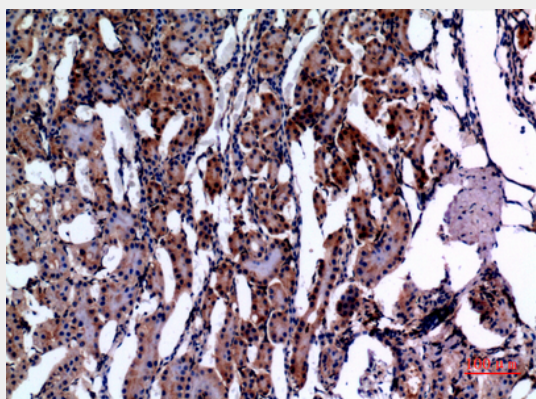
Immunohistochemical analysis of paraffin-embedded mouse-kidney, antibody was diluted at 1:100



Western Blot analysis of Jurkat cells using E2F-4 Polyclonal Antibody.. Secondary antibody was diluted at 1:20000 cells nucleus extracted by Minute TM Cytoplasmic and Nuclear Fractionation kit (SC-003, Invent biotech, MN, USA).

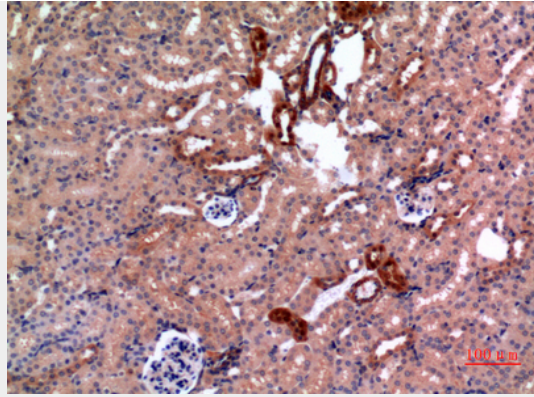


Immunohistochemical analysis of paraffin-embedded rat-kidney, antibody was diluted at 1:100

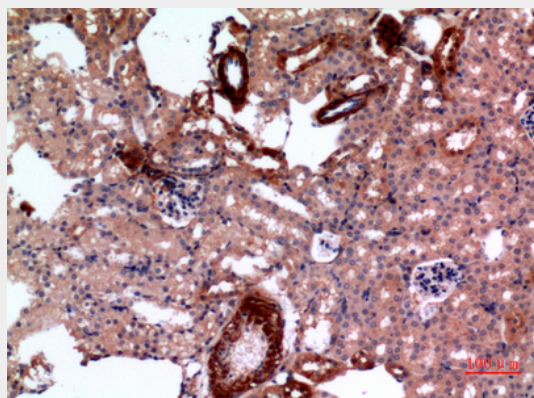


Immunohistochemical analysis of paraffin-embedded rat-kidney, antibody was diluted at 1:100





Immunohistochemical analysis of paraffin-embedded mouse-kidney, antibody was diluted at 1:100



Immunohistochemical analysis of paraffin-embedded mouse-kidney, antibody was diluted at 1:100

#### **E2F-4 Polyclonal Antibody - Background**

Transcription activator that binds DNA cooperatively with DP proteins through the E2 recognition site, 5'-TTTC[CG]CGC- 3' found in the promoter region of a number of genes whose products are involved in cell cycle regulation or in DNA replication. The DRTF1/E2F complex functions in the control of cell-cycle progression from G1 to S phase. E2F4 binds with high affinity to RBL1 and RBL2. In some instances can also bind RB1. Specifically required for multiciliate cell differentiation: together with MCIDAS and E2F5, binds and activate genes required for centriole biogenesis.