

IGFBP6 Polyclonal Antibody
Catalog # AP73544**Specification**

IGFBP6 Polyclonal Antibody - Product Information

Application	WB
Primary Accession	P24592
Reactivity	Human
Host	Rabbit
Clonality	Polyclonal

IGFBP6 Polyclonal Antibody - Additional Information**Gene ID** 3489**Other Names**

IGFBP6; IBP6; Insulin-like growth factor-binding protein 6; IBP-6; IGF-binding protein 6; IGFBP-6

Dilution

WB~~Western Blot: 1/500 - 1/2000. ELISA: 1/20000. Not yet tested in other applications.

Format

Liquid in PBS containing 50% glycerol, 0.5% BSA and 0.09% (W/V) sodium azide.

Storage Conditions

-20°C

IGFBP6 Polyclonal Antibody - Protein Information**Name** IGFBP6 ([HGNC:5475](#))**Synonyms** IBP6**Function**

IGF-binding proteins prolong the half-life of the IGFs and have been shown to either inhibit or stimulate the growth promoting effects of the IGFs on cell culture. They alter the interaction of IGFs with their cell surface receptors. Activates the MAPK signaling pathway and induces cell migration (PubMed:24003225).

Cellular Location

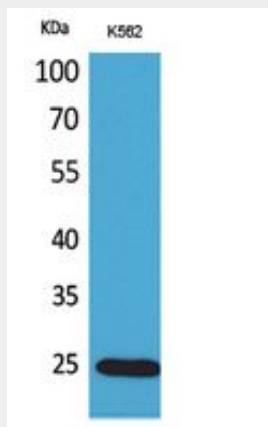
Secreted.

IGFBP6 Polyclonal Antibody - Protocols

Provided below are standard protocols that you may find useful for product applications.

- [Western Blot](#)
- [Blocking Peptides](#)
- [Dot Blot](#)
- [Immunohistochemistry](#)
- [Immunofluorescence](#)
- [Immunoprecipitation](#)
- [Flow Cytometry](#)
- [Cell Culture](#)

IGFBP6 Polyclonal Antibody - Images



Western Blot analysis of K562 cells using IGFBP6 Polyclonal Antibody.. Secondary antibody was diluted at 1:20000

IGFBP6 Polyclonal Antibody - Background

IGF-binding proteins prolong the half-life of the IGFs and have been shown to either inhibit or stimulate the growth promoting effects of the IGFs on cell culture. They alter the interaction of IGFs with their cell surface receptors.