

Angptl1 Polyclonal Antibody
Catalog # AP73547**Specification**

Angptl1 Polyclonal Antibody - Product Information

Application	WB, IHC-P
Primary Accession	O95841
Reactivity	Human, Mouse, Rat
Host	Rabbit
Clonality	Polyclonal

Angptl1 Polyclonal Antibody - Additional Information**Gene ID** 9068**Other Names**

ANGPTL1; ANG3; ANGPT3; ARP1; PSEC0154; Angiopoietin-related protein 1; Angiopoietin-3; ANG-3; Angiopoietin-like protein 1

Dilution

WB~~Western Blot: 1/500 - 1/2000. IHC-p: 1/100-1/300. ELISA: 1/20000. Not yet tested in other applications.

IHC-P~~N/A

Format

Liquid in PBS containing 50% glycerol, 0.5% BSA and 0.09% (W/V) sodium azide.

Storage Conditions

-20°C

Angptl1 Polyclonal Antibody - Protein Information**Name** ANGPTL1**Synonyms** ANG3, ANGPT3, ARP1**Cellular Location**

Secreted.

Tissue Location

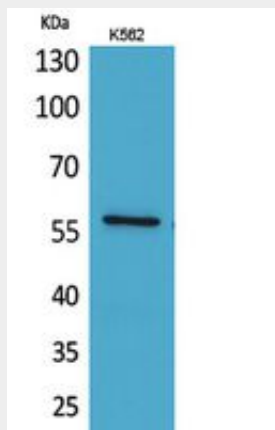
Highly expressed in adrenal gland, placenta, thyroid gland, heart, skeletal muscle and small intestine. Weakly expressed in testis, ovary, colon, pancreas, kidney and stomach

Angptl1 Polyclonal Antibody - Protocols

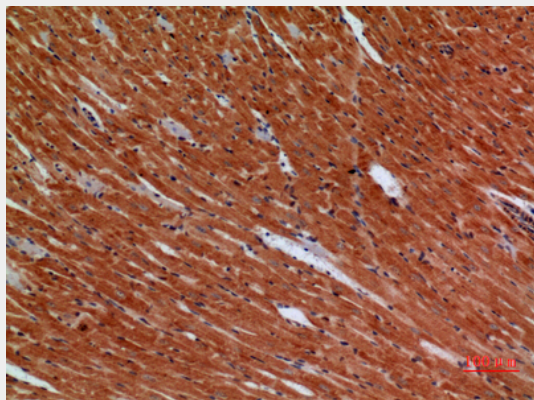
Provided below are standard protocols that you may find useful for product applications.

- [Western Blot](#)
- [Blocking Peptides](#)
- [Dot Blot](#)
- [Immunohistochemistry](#)
- [Immunofluorescence](#)
- [Immunoprecipitation](#)
- [Flow Cytometry](#)
- [Cell Culture](#)

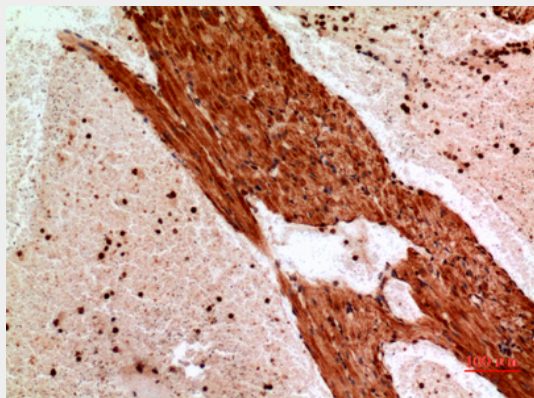
Angptl1 Polyclonal Antibody - Images



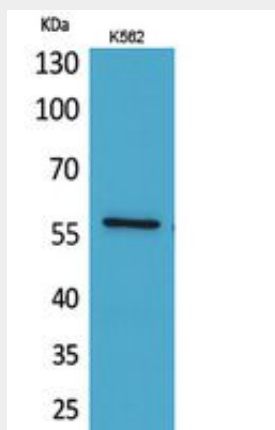
Western Blot analysis of K562 cells using Angptl1 Polyclonal Antibody.. Secondary antibody was diluted at 1:20000



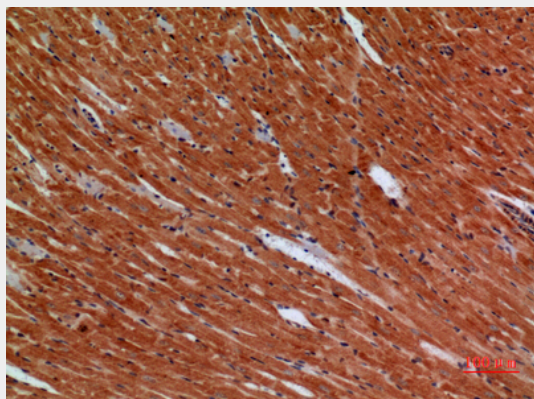
Immunohistochemical analysis of paraffin-embedded mouse-heart, antibody was diluted at 1:100



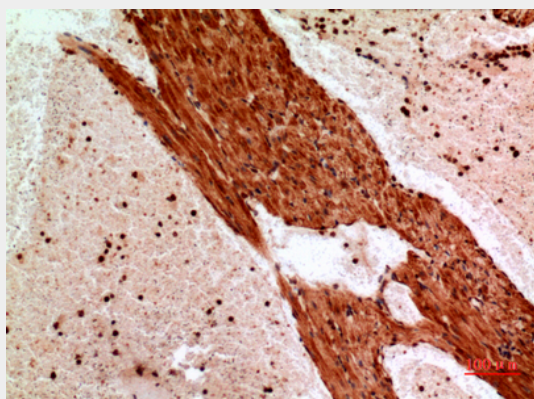
Immunohistochemical analysis of paraffin-embedded mouse-heart, antibody was diluted at 1:100



Western Blot analysis of K562 cells using Angptl1 Polyclonal Antibody.. Secondary antibody was diluted at 1:20000



Immunohistochemical analysis of paraffin-embedded mouse-heart, antibody was diluted at 1:100



Immunohistochemical analysis of paraffin-embedded mouse-heart, antibody was diluted at 1:100