

Annexin VII Polyclonal Antibody
Catalog # AP73556**Specification**

Annexin VII Polyclonal Antibody - Product Information

Application	WB, IHC-P
Primary Accession	P20073
Reactivity	Human, Mouse
Host	Rabbit
Clonality	Polyclonal

Annexin VII Polyclonal Antibody - Additional Information**Gene ID** 310**Other Names**

ANXA7; ANX7; SNX; OK/SW-cl.95; Annexin A7; Annexin VII; Annexin-7; Synexin

Dilution

WB~~Western Blot: 1/500 - 1/2000. IHC-p: 1/100-1/300. ELISA: 1/20000. Not yet tested in other applications.

IHC-P~~N/A

Format

Liquid in PBS containing 50% glycerol, 0.5% BSA and 0.09% (W/V) sodium azide.

Storage Conditions

-20°C

Annexin VII Polyclonal Antibody - Protein Information**Name** ANXA7**Synonyms** ANX7, SNX**Function**

Calcium/phospholipid-binding protein which promotes membrane fusion and is involved in exocytosis.

Tissue Location

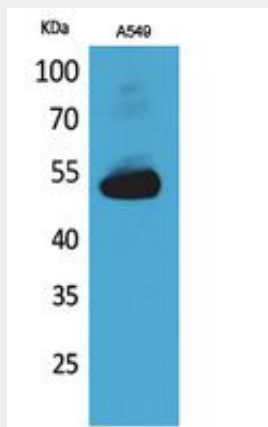
Isoform 1 is expressed in brain, heart and skeletal muscle. Isoform 2 is more abundant in liver, lung, kidney, spleen, fibroblasts and placenta.

Annexin VII Polyclonal Antibody - Protocols

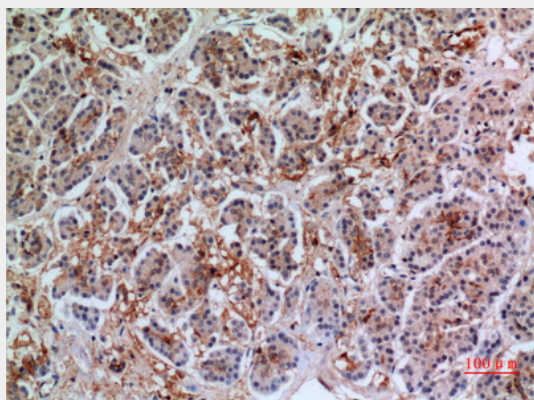
Provided below are standard protocols that you may find useful for product applications.

- [Western Blot](#)
- [Blocking Peptides](#)
- [Dot Blot](#)
- [Immunohistochemistry](#)
- [Immunofluorescence](#)
- [Immunoprecipitation](#)
- [Flow Cytometry](#)
- [Cell Culture](#)

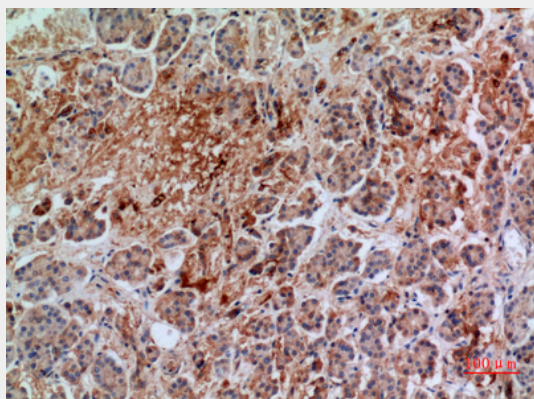
Annexin VII Polyclonal Antibody - Images



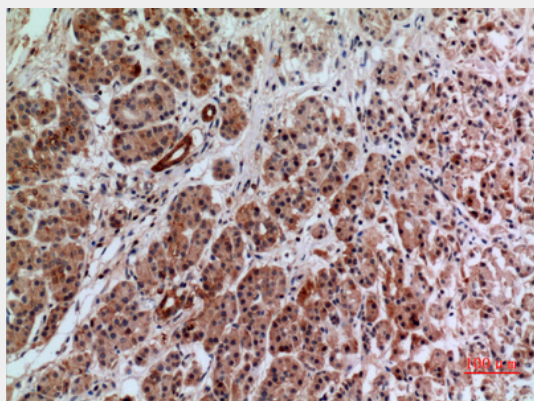
Western Blot analysis of A549 cells using Annexin VII Polyclonal Antibody.. Secondary antibody was diluted at 1:20000



Immunohistochemical analysis of paraffin-embedded human-pancreas, antibody was diluted at 1:100



Immunohistochemical analysis of paraffin-embedded human-pancreas, antibody was diluted at 1:100



Immunohistochemical analysis of paraffin-embedded human-pancreas, antibody was diluted at 1:100

Annexin VII Polyclonal Antibody - Background

Calcium/phospholipid-binding protein which promotes membrane fusion and is involved in exocytosis.