

## Connexin-40 Polyclonal Antibody

Catalog # AP73560

### Specification

---

#### Connexin-40 Polyclonal Antibody - Product Information

Application	WB
Primary Accession	<a href="#">P36382</a>
Reactivity	Human, Mouse, Rat
Host	Rabbit
Clonality	Polyclonal

#### Connexin-40 Polyclonal Antibody - Additional Information

Gene ID 2702

#### Other Names

GJA5; Gap junction alpha-5 protein; Connexin-40; Cx40

#### Dilution

WB~~Western Blot: 1/500 - 1/2000. ELISA: 1/20000. Not yet tested in other applications.

#### Format

Liquid in PBS containing 50% glycerol, 0.5% BSA and 0.09% (W/V) sodium azide.

#### Storage Conditions

-20°C

#### Connexin-40 Polyclonal Antibody - Protein Information

Name GJA5

#### Function

One gap junction consists of a cluster of closely packed pairs of transmembrane channels, the connexons, through which materials of low MW diffuse from one cell to a neighboring cell.

#### Cellular Location

Cell membrane; Multi-pass membrane protein. Cell junction, gap junction

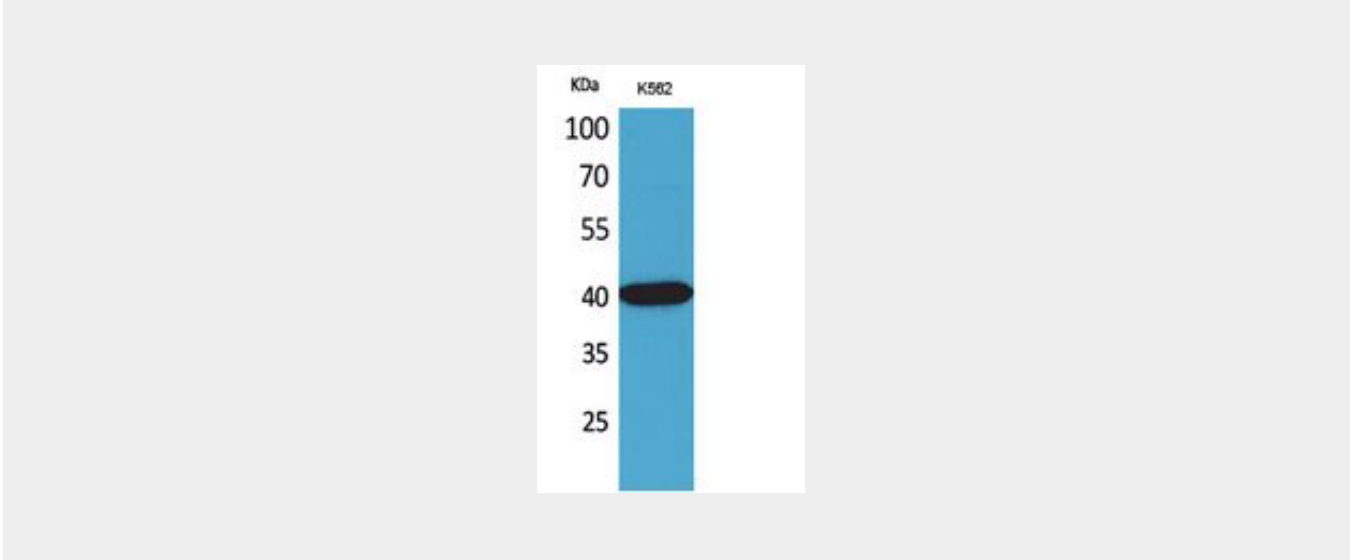
#### Connexin-40 Polyclonal Antibody - Protocols

Provided below are standard protocols that you may find useful for product applications.

- [Western Blot](#)
- [Blocking Peptides](#)
- [Dot Blot](#)
- [Immunohistochemistry](#)

- [Immunofluorescence](#)
- [Immunoprecipitation](#)
- [Flow Cytometry](#)
- [Cell Culture](#)

### Connexin-40 Polyclonal Antibody - Images



### Connexin-40 Polyclonal Antibody - Background

One gap junction consists of a cluster of closely packed pairs of transmembrane channels, the connexons, through which materials of low MW diffuse from one cell to a neighboring cell.