

Laminin γ -2 Polyclonal Antibody
Catalog # AP73562**Specification**

Laminin γ -2 Polyclonal Antibody - Product Information

Application	WB, IHC-P
Primary Accession	Q13753
Reactivity	Human, Rat
Host	Rabbit
Clonality	Polyclonal

Laminin γ -2 Polyclonal Antibody - Additional Information**Gene ID** 3918**Other Names**

LAMC2; LAMB2T; LAMNB2; Laminin subunit gamma-2; Cell-scattering factor 140 kDa subunit; CSF 140 kDa subunit; Epiligrin subunit gamma; Kalinin subunit gamma; Kalinin/nicein/epiligrin 100 kDa subunit; Ladsin 140 kDa subunit; Laminin B2t chain; Laminin-5 subunit gamma; Large adhesive scatter factor 140 kDa subunit; Nicein subunit gamma

Dilution

WB~~Western Blot: 1/500 - 1/2000. IHC-p: 1/100-1/300. ELISA: 1/20000. Not yet tested in other applications.
IHC-P~~N/A

Format

Liquid in PBS containing 50% glycerol, 0.5% BSA and 0.09% (W/V) sodium azide.

Storage Conditions

-20°C

Laminin γ -2 Polyclonal Antibody - Protein Information**Name** LAMC2**Synonyms** LAMB2T, LAMNB2**Function**

Binding to cells via a high affinity receptor, laminin is thought to mediate the attachment, migration and organization of cells into tissues during embryonic development by interacting with other extracellular matrix components. Ladsin exerts cell-scattering activity toward a wide variety of cells, including epithelial, endothelial, and fibroblastic cells.

Cellular Location

Secreted, extracellular space, extracellular matrix, basement membrane. Note=Major component

Tissue Location

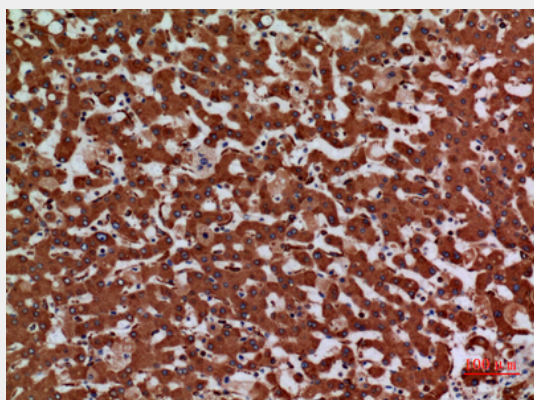
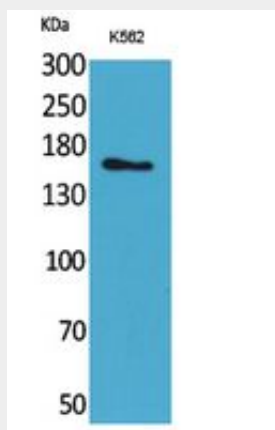
The large variant is expressed only in specific epithelial cells of embryonic and neonatal tissues. In 17-week old embryo the small variant is found in cerebral cortex, lung, and distal tubes of kidney, but not in epithelia except for distal tubuli

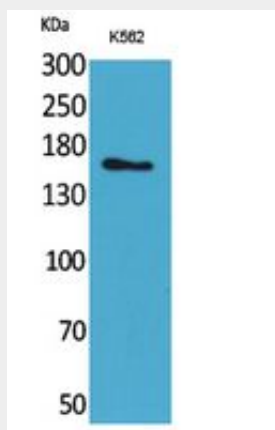
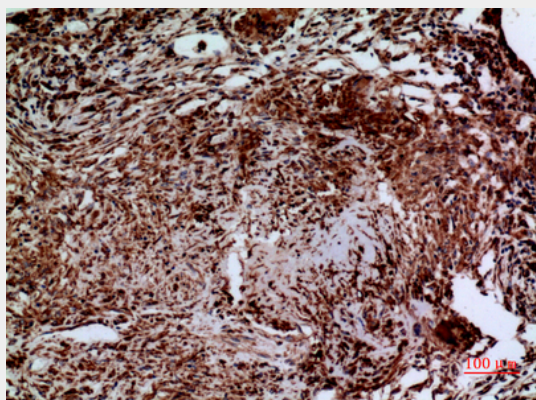
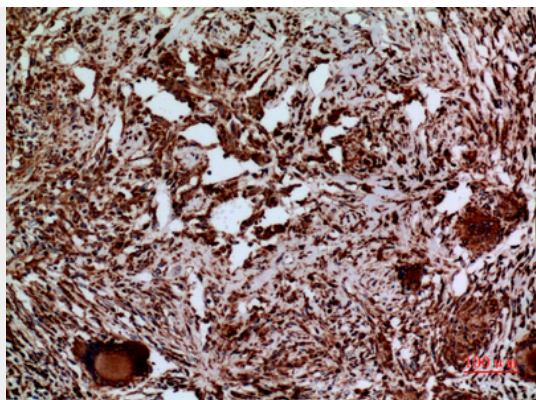
Laminin γ -2 Polyclonal Antibody - Protocols

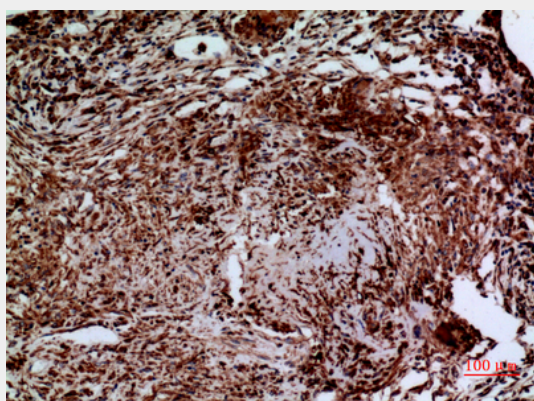
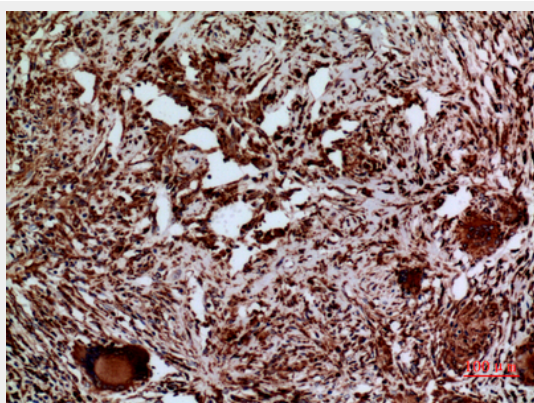
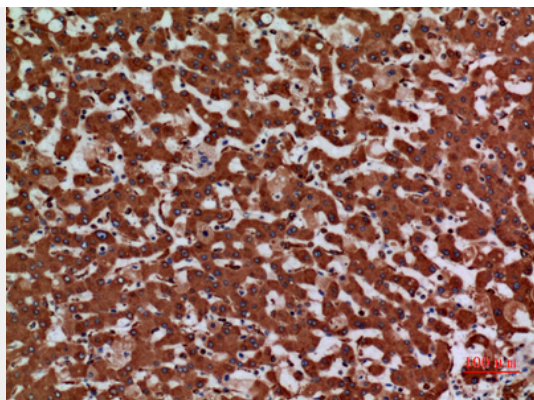
Provided below are standard protocols that you may find useful for product applications.

- [Western Blot](#)
- [Blocking Peptides](#)
- [Dot Blot](#)
- [Immunohistochemistry](#)
- [Immunofluorescence](#)
- [Immunoprecipitation](#)
- [Flow Cytometry](#)
- [Cell Culture](#)

Laminin γ -2 Polyclonal Antibody - Images







Laminin γ -2 Polyclonal Antibody - Background

Binding to cells via a high affinity receptor, laminin is thought to mediate the attachment, migration and organization of cells into tissues during embryonic development by interacting with other extracellular matrix components. Ladsin exerts cell- scattering activity toward a wide variety of cells, including epithelial, endothelial, and fibroblastic cells.