

**AACT Polyclonal Antibody**  
**Catalog # AP73574****Specification**

---

**AACT Polyclonal Antibody - Product Information**

Application	WB, IHC-P
Primary Accession	<a href="#">P01011</a>
Reactivity	Human
Host	Rabbit
Clonality	Polyclonal

**AACT Polyclonal Antibody - Additional Information****Gene ID** 12**Other Names**

SERPINA3; AACT; GIG24; GIG25; Alpha-1-antichymotrypsin; ACT; Cell growth-inhibiting gene 24/25 protein; Serpin A3

**Dilution**

WB~~Western Blot: 1/500 - 1/2000. IHC-p: 1/100-1/300. ELISA: 1/20000. Not yet tested in other applications.

IHC-P~~N/A

**Format**

Liquid in PBS containing 50% glycerol, 0.5% BSA and 0.09% (W/V) sodium azide.

**Storage Conditions**

-20°C

**AACT Polyclonal Antibody - Protein Information****Name** SERPINA3**Synonyms** AACT**Function**

Although its physiological function is unclear, it can inhibit neutrophil cathepsin G and mast cell chymase, both of which can convert angiotensin-1 to the active angiotensin-2.

**Cellular Location**

Secreted.

**Tissue Location**

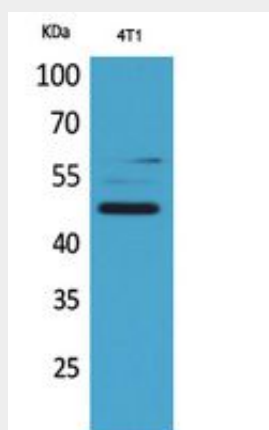
Plasma. Synthesized in the liver. Like the related alpha-1-antitrypsin, its concentration increases in the acute phase of inflammation or infection. Found in the amyloid plaques from the hippocampus of Alzheimer disease brains.

## AACT Polyclonal Antibody - Protocols

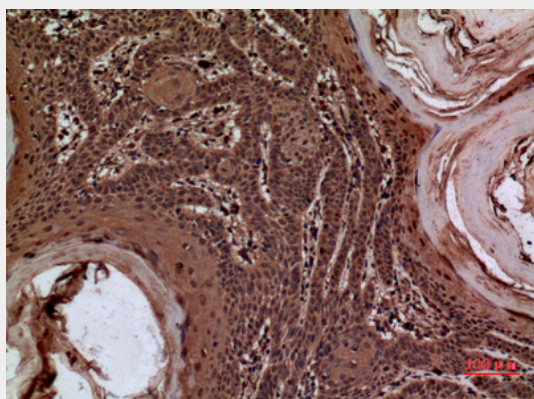
Provided below are standard protocols that you may find useful for product applications.

- [Western Blot](#)
- [Blocking Peptides](#)
- [Dot Blot](#)
- [Immunohistochemistry](#)
- [Immunofluorescence](#)
- [Immunoprecipitation](#)
- [Flow Cytometry](#)
- [Cell Culture](#)

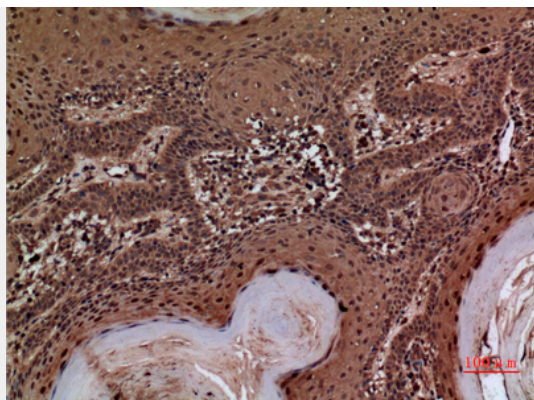
## AACT Polyclonal Antibody - Images



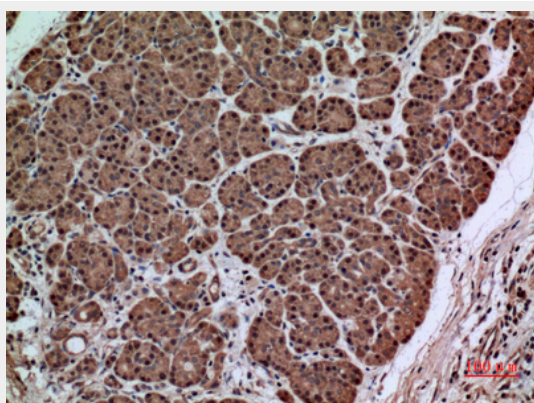
Western Blot analysis of 4T1 cells using AACT Polyclonal Antibody.. Secondary antibody was diluted at 1:20000 cells nucleus extracted by Minute TM Cytoplasmic and Nuclear Fractionation kit (SC-003, Invent biotech, MN, USA).



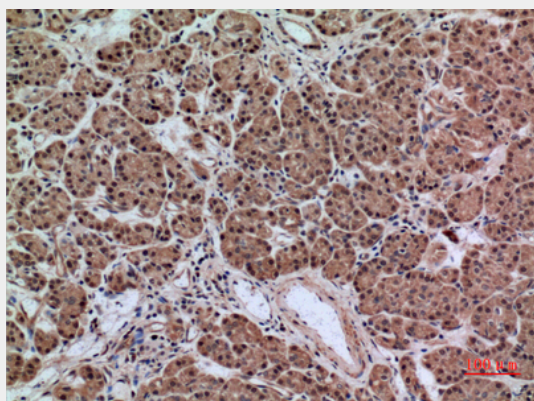
Immunohistochemical analysis of paraffin-embedded human-skin, antibody was diluted at 1:100



Immunohistochemical analysis of paraffin-embedded human-skin, antibody was diluted at 1:100



Immunohistochemical analysis of paraffin-embedded human-pancreas-cancer, antibody was diluted at 1:100



Immunohistochemical analysis of paraffin-embedded human-pancreas-cancer, antibody was diluted at 1:100

#### **AACT Polyclonal Antibody - Background**

Although its physiological function is unclear, it can inhibit neutrophil cathepsin G and mast cell chymase, both of which can convert angiotensin-1 to the active angiotensin-2.