

BF Antibody (Center)
Purified Rabbit Polyclonal Antibody (Pab)
Catalog # AP7357c**Specification**

BF Antibody (Center) - Product Information

Application	IHC-P, WB,E
Primary Accession	P00751
Reactivity	Human
Host	Rabbit
Clonality	Polyclonal
Isotype	Rabbit IgG
Calculated MW	85533
Antigen Region	395-422

BF Antibody (Center) - Additional Information**Gene ID** 629**Other Names**

Complement factor B, C3/C5 convertase, Glycine-rich beta glycoprotein, GBG, PBF2, Properdin factor B, Complement factor B Ba fragment, Complement factor B Bb fragment, CFB, BF, BFD

Target/Specificity

This BF antibody is generated from rabbits immunized with a KLH conjugated synthetic peptide between 395-422 amino acids from the Central region of human BF.

Dilution

IHC-P~~1:50~100

WB~~1:1000

E~~Use at an assay dependent concentration.

Format

Purified polyclonal antibody supplied in PBS with 0.09% (W/V) sodium azide. This antibody is prepared by Saturated Ammonium Sulfate (SAS) precipitation followed by dialysis against PBS.

Storage

Maintain refrigerated at 2-8°C for up to 2 weeks. For long term storage store at -20°C in small aliquots to prevent freeze-thaw cycles.

Precautions

BF Antibody (Center) is for research use only and not for use in diagnostic or therapeutic procedures.

BF Antibody (Center) - Protein Information**Name** CFB ([HGNC:1037](#))

Synonyms BF, BFD

Function Precursor of the catalytic component of the C3 and C5 convertase complexes of the alternative pathway of the complement system, a cascade of proteins that leads to phagocytosis and breakdown of pathogens and signaling that strengthens the adaptive immune system (PubMed:[3638964](#), PubMed:[624565](#), PubMed:[6554279](#), PubMed:[6919543](#), PubMed:[9748277](#)). The alternative complement pathway acts as an amplification loop that enhances other complement pathways (classical, lectin and GZMK) by promoting formation of additional C3 and C5 convertases (PubMed:[3638964](#), PubMed:[624565](#), PubMed:[6554279](#), PubMed:[6919543](#), PubMed:[9748277](#)). CFB is cleaved and activated by CFD to generate Ba and Bb chains; Bb chain constituting the catalytic component of the C3 and C5 convertases (PubMed:[6769474](#), PubMed:[9748277](#)).

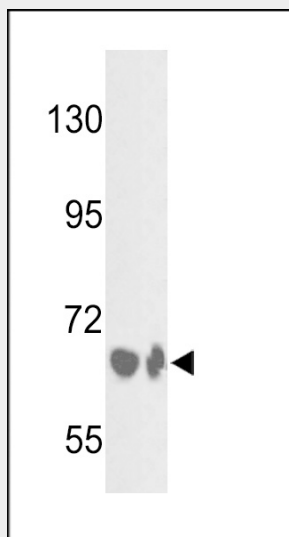
Cellular Location

Secreted.

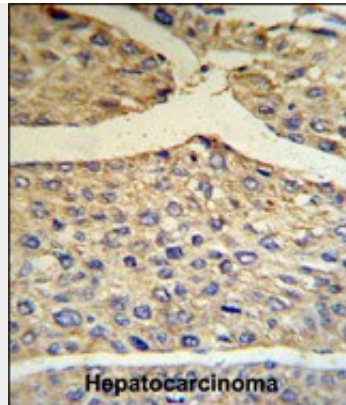
BF Antibody (Center) - Protocols

Provided below are standard protocols that you may find useful for product applications.

- [Western Blot](#)
- [Blocking Peptides](#)
- [Dot Blot](#)
- [Immunohistochemistry](#)
- [Immunofluorescence](#)
- [Immunoprecipitation](#)
- [Flow Cytometry](#)
- [Cell Culture](#)

BF Antibody (Center) - Images

Western blot analysis of BF Antibody (Center) (Cat.# AP7357c) in HepG2 cell line and mouse liver tissue lysates (35ug/lane). BF (arrow) was detected using the purified Pab.



BF Antibody (Center) (RB18685) IHC analysis in formalin fixed and paraffin embedded human hepatocarcinoma tissue followed by peroxidase conjugation of the secondary antibody and DAB staining. This data demonstrates the use of the BF Antibody (Center) for immunohistochemistry. Clinical relevance has not been evaluated.

BF Antibody (Center) - Background

BF is complement factor B, a component of the alternative pathway of complement activation. Factor B circulates in the blood as a single chain polypeptide. Upon activation of the alternative pathway, it is cleaved by complement factor D yielding the noncatalytic chain Ba and the catalytic subunit Bb. The active subunit Bb is a serine protease which associates with C3b to form the alternative pathway C3 convertase. Bb is involved in the proliferation of preactivated B lymphocytes, while Ba inhibits their proliferation.

BF Antibody (Center) - References

Baatz,H., Klin Monatsbl Augenheilkd 226 (8), 654-658 (2009)
Goring,K., Am. J. Physiol., Cell Physiol. 296 (5), C1140-C1150 (2009)