

COL5A2 Antibody (N-term)
Purified Rabbit Polyclonal Antibody (Pab)
Catalog # AP7358a**Specification**

COL5A2 Antibody (N-term) - Product Information

Application	FC, WB,E
Primary Accession	P05997
Reactivity	Human, Mouse
Host	Rabbit
Clonality	Polyclonal
Isotype	Rabbit IgG
Calculated MW	144910
Antigen Region	90-118

COL5A2 Antibody (N-term) - Additional Information**Gene ID** 1290**Other Names**

Collagen alpha-2(V) chain, COL5A2

Target/Specificity

This COL5A2 antibody is generated from rabbits immunized with a KLH conjugated synthetic peptide between 90-118 amino acids from the N-terminal region of human COL5A2.

Dilution

FC~~1:10~50

WB~~1:1000

E~~Use at an assay dependent concentration.

Format

Purified polyclonal antibody supplied in PBS with 0.09% (W/V) sodium azide. This antibody is prepared by Saturated Ammonium Sulfate (SAS) precipitation followed by dialysis against PBS.

Storage

Maintain refrigerated at 2-8°C for up to 2 weeks. For long term storage store at -20°C in small aliquots to prevent freeze-thaw cycles.

Precautions

COL5A2 Antibody (N-term) is for research use only and not for use in diagnostic or therapeutic procedures.

COL5A2 Antibody (N-term) - Protein Information**Name** COL5A2**Function** Type V collagen is a member of group I collagen (fibrillar forming collagen). It is a minor

connective tissue component of nearly ubiquitous distribution. Type V collagen binds to DNA, heparan sulfate, thrombospondin, heparin, and insulin. Type V collagen is a key determinant in the assembly of tissue-specific matrices (By similarity).

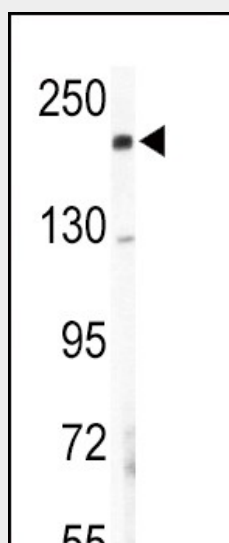
Cellular Location

Secreted, extracellular space, extracellular matrix {ECO:0000255|PROSITE-ProRule:PRU00793}

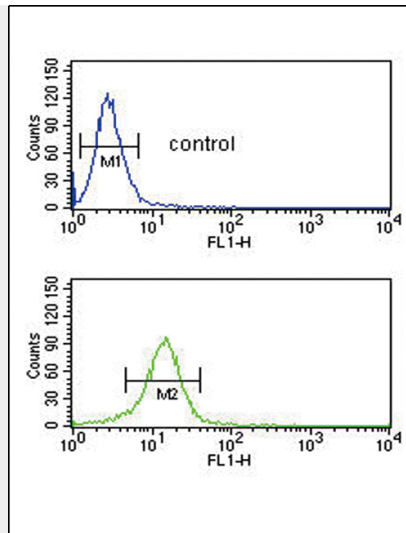
COL5A2 Antibody (N-term) - Protocols

Provided below are standard protocols that you may find useful for product applications.

- [Western Blot](#)
- [Blocking Peptides](#)
- [Dot Blot](#)
- [Immunohistochemistry](#)
- [Immunofluorescence](#)
- [Immunoprecipitation](#)
- [Flow Cytometry](#)
- [Cell Culture](#)

COL5A2 Antibody (N-term) - Images

Western blot analysis of COL5A2 Antibody (N-term) (Cat.# AP7358a) in mouse lung tissue lysates (35ug/lane). COL5A2 (arrow) was detected using the purified Pab.



COL5A2 Antibody (N-term) (Cat. #AP7358a) flow cytometric analysis of NCI-H460 cells (bottom histogram) compared to a negative control cell (top histogram). FITC-conjugated goat-anti-rabbit secondary antibodies were used for the analysis.

COL5A2 Antibody (N-term) - Background

COL5A2 is an alpha chain for one of the low abundance fibrillar collagens. Fibrillar collagen molecules are trimers that can be composed of one or more types of alpha chains. Type V collagen is found in tissues containing type I collagen and appears to regulate the assembly of heterotypic fibers composed of both type I and type V collagen. This protein is closely related to type XI collagen and it is possible that the collagen chains of types V and XI constitute a single collagen type with tissue-specific chain combinations.

COL5A2 Antibody (N-term) - References

Menon, R., *Reprod. Biol. Endocrinol.* 7 (1), 62 (2009)
Videman, T., *Arthritis Rheum.* 60 (2), 470-481 (2009)
Segev, F., *Invest. Ophthalmol. Vis. Sci.* 47 (2), 565-573 (2006)