

IDH1 Polyclonal Antibody
Catalog # AP73599**Specification**

IDH1 Polyclonal Antibody - Product Information

Application	WB, IHC-P
Primary Accession	O75874
Reactivity	Human, Mouse, Rat
Host	Rabbit
Clonality	Polyclonal

IDH1 Polyclonal Antibody - Additional Information**Gene ID** 3417**Other Names**

IDH1; PICD; Isocitrate dehydrogenase [NADP] cytoplasmic; IDH; Cytosolic NADP-isocitrate dehydrogenase; IDP; NADP(+)-specific ICDH; Oxalosuccinate decarboxylase

Dilution

WB~~Western Blot: 1/500 - 1/2000. IHC-p: 1/100-1/300. ELISA: 1/20000. Not yet tested in other applications.

IHC-P~~N/A

Format

Liquid in PBS containing 50% glycerol, 0.5% BSA and 0.09% (W/V) sodium azide.

Storage Conditions

-20°C

IDH1 Polyclonal Antibody - Protein Information**Name** IDH1**Synonyms** PICD**Function**

Catalyzes the NADP(+)-dependent oxidative decarboxylation of isocitrate (D-threo-isocitrate) to 2-ketoglutarate (2-oxoglutarate), which is required by other enzymes such as the phytanoyl-CoA dioxygenase (PubMed: 10521434, PubMed: 19935646). Plays a critical role in the generation of NADPH, an important cofactor in many biosynthesis pathways (PubMed: 10521434). May act as a corneal epithelial crystallin and may be involved in maintaining corneal epithelial transparency (By similarity).

Cellular Location

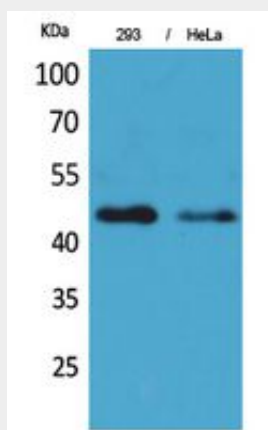
Cytoplasm, cytosol. Peroxisome

IDH1 Polyclonal Antibody - Protocols

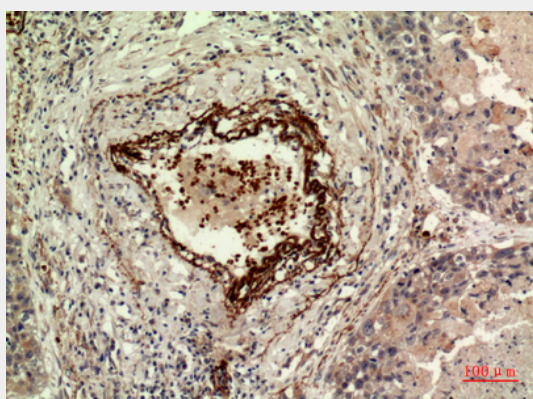
Provided below are standard protocols that you may find useful for product applications.

- [Western Blot](#)
- [Blocking Peptides](#)
- [Dot Blot](#)
- [Immunohistochemistry](#)
- [Immunofluorescence](#)
- [Immunoprecipitation](#)
- [Flow Cytometry](#)
- [Cell Culture](#)

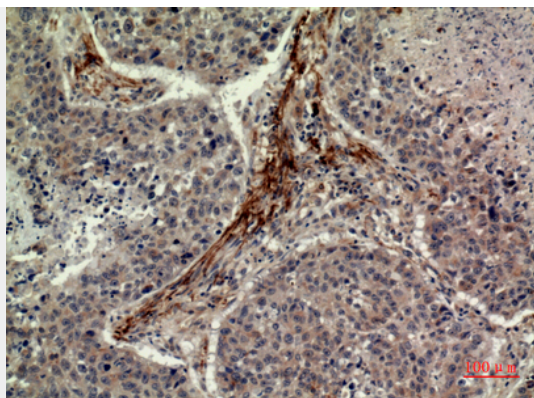
IDH1 Polyclonal Antibody - Images



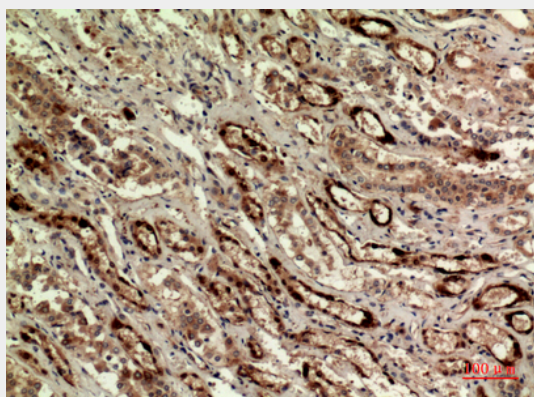
Western Blot analysis of 293, HeLa cells using IDH1 Polyclonal Antibody.. Secondary antibody was diluted at 1:20000



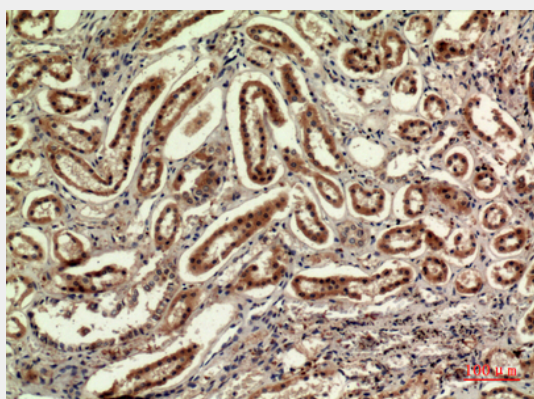
Immunohistochemical analysis of paraffin-embedded human-lung, antibody was diluted at 1:100



Immunohistochemical analysis of paraffin-embedded human-lung, antibody was diluted at 1:100



Immunohistochemical analysis of paraffin-embedded human-kidney, antibody was diluted at 1:100



Immunohistochemical analysis of paraffin-embedded human-kidney, antibody was diluted at 1:100