

**IL-12A p35 Polyclonal Antibody**  
**Catalog # AP73625****Specification****IL-12A p35 Polyclonal Antibody - Product Information**

Application	WB, IHC-P
Primary Accession	<a href="#">P29459</a>
Reactivity	Human
Host	Rabbit
Clonality	Polyclonal

**IL-12A p35 Polyclonal Antibody - Additional Information****Gene ID** 3592**Other Names**

IL12A; NKSF1; Interleukin-12 subunit alpha; IL-12A; Cytotoxic lymphocyte maturation factor 35 kDa subunit; CLMF p35; IL-12 subunit p35; NK cell stimulatory factor chain 1; NKSF1

**Dilution**

WB~~Western Blot: 1/500 - 1/2000. IHC-p: 1/100-1/300. ELISA: 1/20000. Not yet tested in other applications.

IHC-P~~N/A

**Format**

Liquid in PBS containing 50% glycerol, 0.5% BSA and 0.09% (W/V) sodium azide.

**Storage Conditions**

-20°C

**IL-12A p35 Polyclonal Antibody - Protein Information****Name** IL12A**Synonyms** NKSF1**Function**

Heterodimerizes with IL12B to form the IL-12 cytokine or with EBI3/IL27B to form the IL-35 cytokine (PubMed: <a href="http://www.uniprot.org/citations/8605935" target="\_blank">8605935</a>, PubMed: <a href="http://www.uniprot.org/citations/8943050" target="\_blank">8943050</a>). IL-12 is primarily produced by professional antigen-presenting cells (APCs) such as B-cells and dendritic cells (DCs) as well as macrophages and granulocytes and regulates T-cell and natural killer-cell responses, induces the production of interferon-gamma (IFN-gamma), favors the differentiation of T-helper 1 (Th1) cells and is an important link between innate resistance and adaptive immunity (PubMed: <a href="http://www.uniprot.org/citations/1673147" target="\_blank">1673147</a>, PubMed: <a href="http://www.uniprot.org/citations/1674604" target="\_blank">1674604</a>, PubMed: <a href="http://www.uniprot.org/citations/8605935" target="\_blank">8605935</a>).

Mechanistically, exerts its biological effects through a receptor composed of IL12R1 and IL12R2 subunits (PubMed:<a href="http://www.uniprot.org/citations/8943050" target="\_blank">8943050</a>). Binding to the receptor results in the rapid tyrosine phosphorylation of a number of cellular substrates including the JAK family kinases TYK2 and JAK2 (PubMed:<a href="http://www.uniprot.org/citations/7528775" target="\_blank">7528775</a>). In turn, recruited STAT4 gets phosphorylated and translocates to the nucleus where it regulates cytokine/growth factor responsive genes (PubMed:<a href="http://www.uniprot.org/citations/7638186" target="\_blank">7638186</a>). As part of IL-35, plays essential roles in maintaining the immune homeostasis of the liver microenvironment and also functions as an immune-suppressive cytokine (By similarity). Mediates biological events through unconventional receptors composed of IL12RB2 and gp130/IL6ST heterodimers or homodimers (PubMed:<a href="http://www.uniprot.org/citations/22306691" target="\_blank">22306691</a>). Signaling requires the transcription factors STAT1 and STAT4, which form a unique heterodimer that binds to distinct DNA sites (PubMed:<a href="http://www.uniprot.org/citations/22306691" target="\_blank">22306691</a>).

### Cellular Location

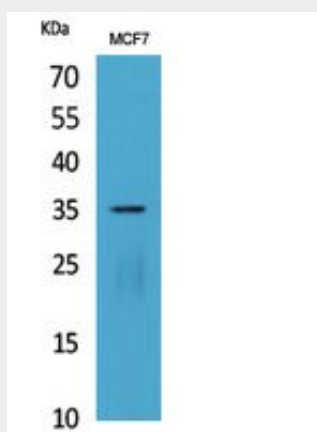
Secreted

### IL-12A p35 Polyclonal Antibody - Protocols

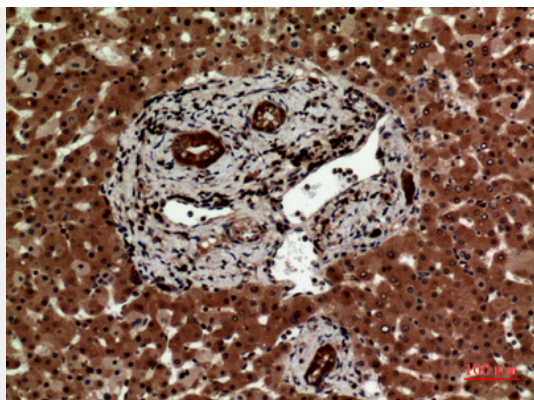
Provided below are standard protocols that you may find useful for product applications.

- [Western Blot](#)
- [Blocking Peptides](#)
- [Dot Blot](#)
- [Immunohistochemistry](#)
- [Immunofluorescence](#)
- [Immunoprecipitation](#)
- [Flow Cytometry](#)
- [Cell Culture](#)

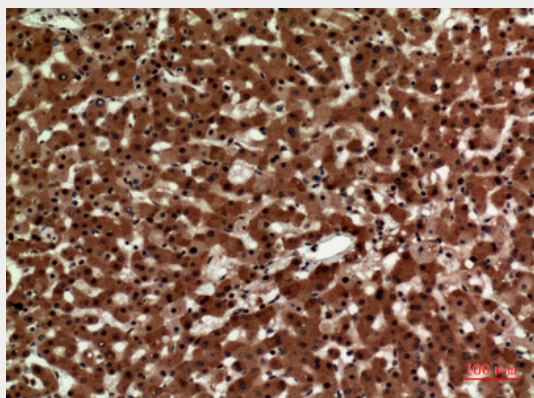
### IL-12A p35 Polyclonal Antibody - Images



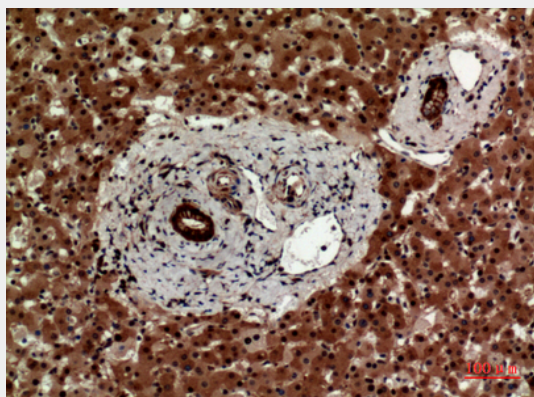
Western Blot analysis of MCF7 cells using IL-12A p35 Polyclonal Antibody.. Secondary antibody was diluted at 1:20000



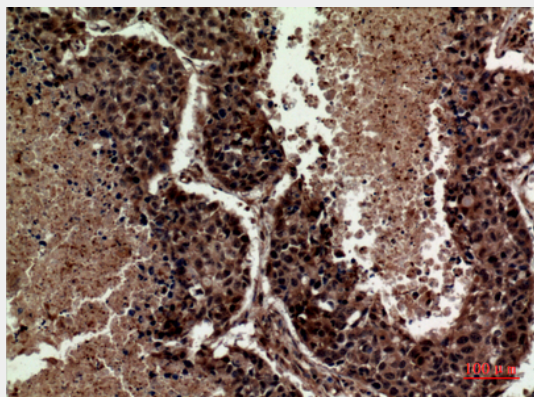
Immunohistochemical analysis of paraffin-embedded human-liver, antibody was diluted at 1:100



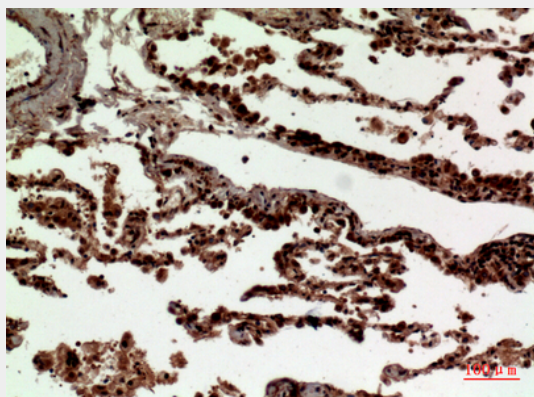
Immunohistochemical analysis of paraffin-embedded human-liver, antibody was diluted at 1:100



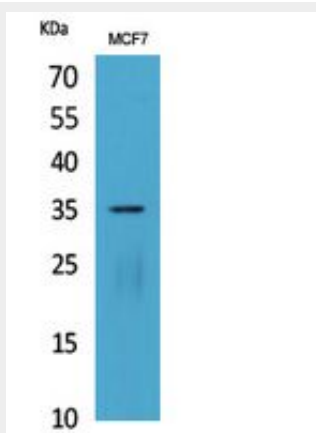
Immunohistochemical analysis of paraffin-embedded human-liver, antibody was diluted at 1:100



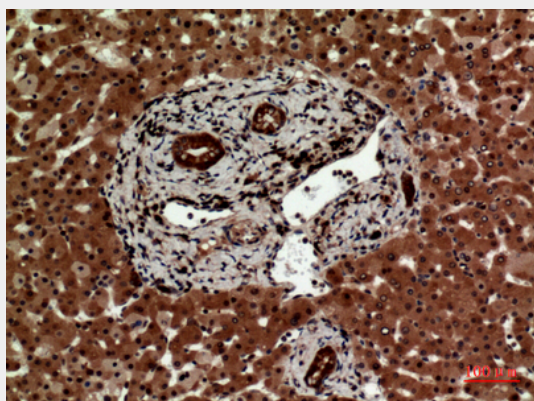
Immunohistochemical analysis of paraffin-embedded human-lung, antibody was diluted at 1:100



Immunohistochemical analysis of paraffin-embedded human-lung, antibody was diluted at 1:100

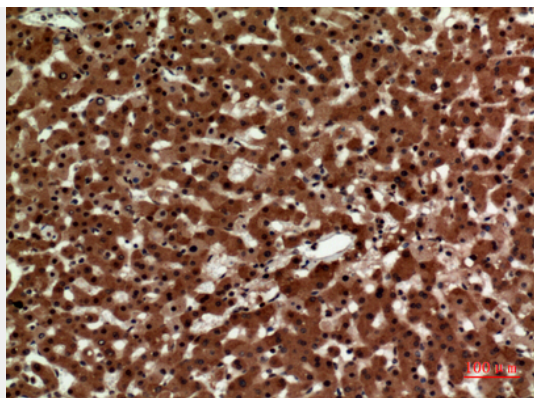


Western Blot analysis of MCF7 cells using IL-12A p35 Polyclonal Antibody.. Secondary antibody was diluted at 1:20000

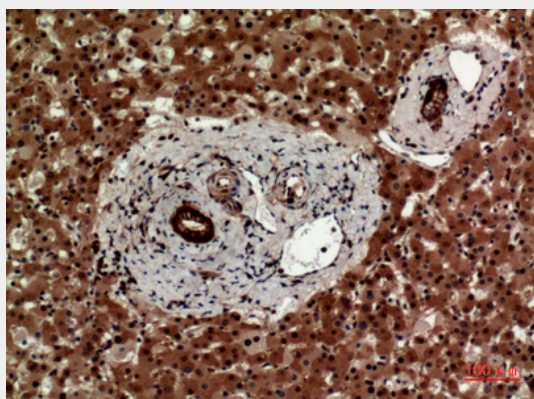


Immunohistochemical analysis of paraffin-embedded human-liver, antibody was diluted at 1:100

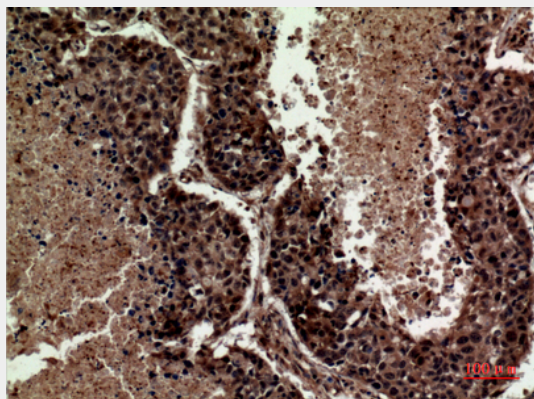




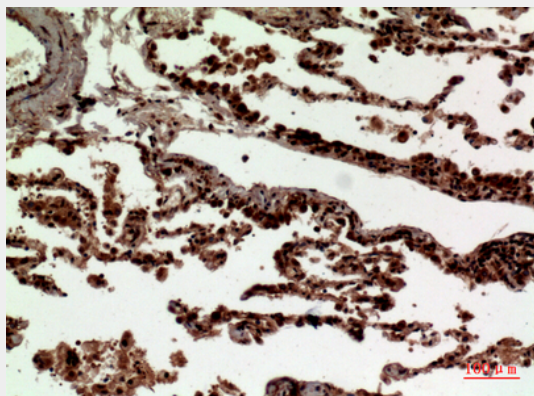
Immunohistochemical analysis of paraffin-embedded human-liver, antibody was diluted at 1:100



Immunohistochemical analysis of paraffin-embedded human-liver, antibody was diluted at 1:100



Immunohistochemical analysis of paraffin-embedded human-lung, antibody was diluted at 1:100



Immunohistochemical analysis of paraffin-embedded human-lung, antibody was diluted at 1:100

**IL-12A p35 Polyclonal Antibody - Background**

Cytokine that can act as a growth factor for activated T and NK cells, enhance the lytic activity of NK/lymphokine- activated killer cells, and stimulate the production of IFN-gamma by resting PBMC.