

**ECA39 Polyclonal Antibody**  
Catalog # AP73626**Specification**

---

**ECA39 Polyclonal Antibody - Product Information**

Application	<b>WB, IHC-P</b>
Primary Accession	<a href="#">P54687</a>
Reactivity	<b>Human, Mouse, Rat</b>
Host	<b>Rabbit</b>
Clonality	<b>Polyclonal</b>

**ECA39 Polyclonal Antibody - Additional Information****Gene ID** 586**Other Names**

BCAT1; BCT1; ECA39; Branched-chain-amino-acid aminotransferase, cytosolic; BCAT(c); Protein ECA39

**Dilution**

WB~~Western Blot: 1/500 - 1/2000. IHC-p: 1/100-1/300. ELISA: 1/20000. Not yet tested in other applications.

IHC-P~~N/A

**Format**

Liquid in PBS containing 50% glycerol, 0.5% BSA and 0.09% (W/V) sodium azide.

**Storage Conditions**

-20°C

**ECA39 Polyclonal Antibody - Protein Information****Name** BCAT1**Synonyms** BCT1, ECA39 {ECO:0000303|PubMed:8692959}**Function**

Catalyzes the first reaction in the catabolism of the essential branched chain amino acids leucine, isoleucine, and valine.

**Cellular Location**

Cytoplasm {ECO:0000250|UniProtKB:P54690}.

**Tissue Location**

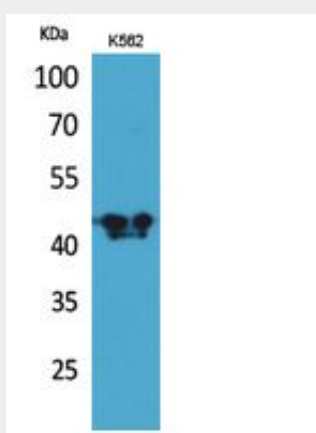
During embryogenesis, expressed in the brain and kidney. Overexpressed in MYC-induced tumors such as Burkitt's lymphoma

## ECA39 Polyclonal Antibody - Protocols

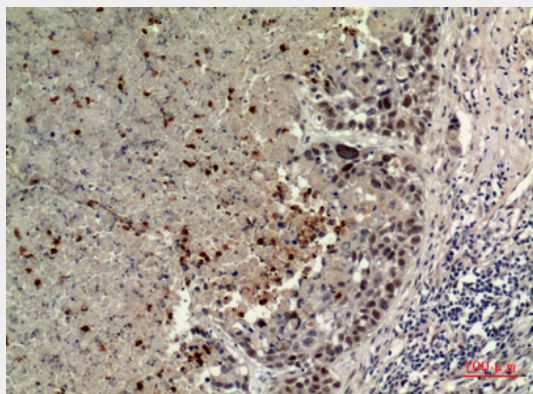
Provided below are standard protocols that you may find useful for product applications.

- [Western Blot](#)
- [Blocking Peptides](#)
- [Dot Blot](#)
- [Immunohistochemistry](#)
- [Immunofluorescence](#)
- [Immunoprecipitation](#)
- [Flow Cytometry](#)
- [Cell Culture](#)

## ECA39 Polyclonal Antibody - Images



Western Blot analysis of K562 cells using ECA39 Polyclonal Antibody.. Secondary antibody was diluted at 1:20000



Immunohistochemical analysis of paraffin-embedded human-lung, antibody was diluted at 1:100

## ECA39 Polyclonal Antibody - Background

Catalyzes the first reaction in the catabolism of the essential branched chain amino acids leucine, isoleucine, and valine.