

**MCM6 Polyclonal Antibody**  
**Catalog # AP73637****Specification**

---

**MCM6 Polyclonal Antibody - Product Information**

Application	WB
Primary Accession	<a href="#">Q14566</a>
Reactivity	Human, Mouse, Rat
Host	Rabbit
Clonality	Polyclonal

**MCM6 Polyclonal Antibody - Additional Information****Gene ID** 4175**Other Names**

MCM6; DNA replication licensing factor MCM6; p105MCM

**Dilution**

WB~~Western Blot: 1/500 - 1/2000. ELISA: 1/20000. Not yet tested in other applications.

**Format**

Liquid in PBS containing 50% glycerol, 0.5% BSA and 0.09% (W/V) sodium azide.

**Storage Conditions**

-20°C

**MCM6 Polyclonal Antibody - Protein Information****Name** MCM6 ([HGNC:6949](#))**Function**

Acts as a component of the MCM2-7 complex (MCM complex) which is the replicative helicase essential for 'once per cell cycle' DNA replication initiation and elongation in eukaryotic cells. Core component of CDC45-MCM-GINS (CMG) helicase, the molecular machine that unwinds template DNA during replication, and around which the replisome is built (PubMed:<a href="http://www.uniprot.org/citations/16899510" target="\_blank">16899510</a>, PubMed:<a href="http://www.uniprot.org/citations/32453425" target="\_blank">32453425</a>, PubMed:<a href="http://www.uniprot.org/citations/34694004" target="\_blank">34694004</a>, PubMed:<a href="http://www.uniprot.org/citations/34700328" target="\_blank">34700328</a>, PubMed:<a href="http://www.uniprot.org/citations/35585232" target="\_blank">35585232</a>, PubMed:<a href="http://www.uniprot.org/citations/9305914" target="\_blank">9305914</a>). The active ATPase sites in the MCM2-7 ring are formed through the interaction surfaces of two neighboring subunits such that a critical structure of a conserved arginine finger motif is provided in trans relative to the ATP-binding site of the Walker A box of the adjacent subunit. The six ATPase active sites, however, are likely to contribute differentially to the complex helicase activity (PubMed:<a href="http://www.uniprot.org/citations/32453425" target="\_blank">32453425</a>).

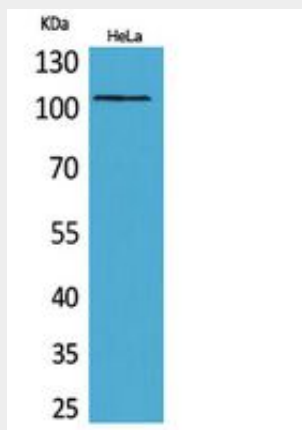
**Cellular Location**

Nucleus. Chromosome. Note= Binds to chromatin during G1 and detaches from it during S phase.

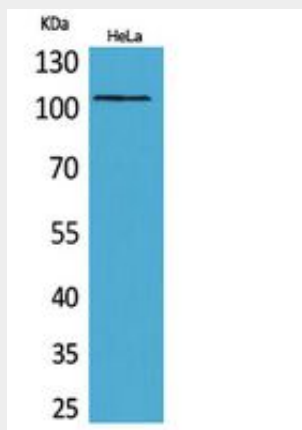
**MCM6 Polyclonal Antibody - Protocols**

Provided below are standard protocols that you may find useful for product applications.

- [Western Blot](#)
- [Blocking Peptides](#)
- [Dot Blot](#)
- [Immunohistochemistry](#)
- [Immunofluorescence](#)
- [Immunoprecipitation](#)
- [Flow Cytometry](#)
- [Cell Culture](#)

**MCM6 Polyclonal Antibody - Images**

Western Blot analysis of HeLa cells using MCM6 Polyclonal Antibody .. Secondary antibody was diluted at 1:20000 cells nucleus extracted by Minute TM Cytoplasmic and Nuclear Fractionation kit (SC-003, Invent biotech, MN, USA).



Western Blot analysis of HeLa cells using MCM6 Polyclonal Antibody .. Secondary antibody was diluted at 1:20000 cells nucleus extracted by Minute TM Cytoplasmic and Nuclear Fractionation kit (SC-003, Invent biotech, MN, USA).

**MCM6 Polyclonal Antibody - Background**

Acts as component of the MCM2-7 complex (MCM complex) which is the putative replicative helicase essential for 'once per cell cycle' DNA replication initiation and elongation in eukaryotic cells. The active ATPase sites in the MCM2-7 ring are formed through the interaction surfaces of two neighboring subunits such that a critical structure of a conserved arginine finger motif is provided in trans relative to the ATP-binding site of the Walker A box of the adjacent subunit. The six ATPase active sites, however, are likely to contribute differentially to the complex helicase activity.