

DCL-1 Polyclonal Antibody
Catalog # AP73656**Specification**

DCL-1 Polyclonal Antibody - Product Information

Application	WB
Primary Accession	Q8IX05
Reactivity	Human
Host	Rabbit
Clonality	Polyclonal

DCL-1 Polyclonal Antibody - Additional Information**Gene ID** 9936**Other Names**

CD302; CLEC13A; DCL1; KIAA0022; CD302 antigen; C-type lectin BIMLEC; C-type lectin domain family 13 member A; DEC205-associated C-type lectin 1; Type I transmembrane C-type lectin receptor DCL-1; CD302

Dilution

WB~~Western Blot: 1/500 - 1/2000. ELISA: 1/20000. Not yet tested in other applications.

Format

Liquid in PBS containing 50% glycerol, 0.5% BSA and 0.09% (W/V) sodium azide.

Storage Conditions

-20°C

DCL-1 Polyclonal Antibody - Protein Information**Name** CD302**Synonyms** CLEC13A, DCL1, KIAA0022**Function**

Potential multifunctional C-type lectin receptor that may play roles in endocytosis and phagocytosis as well as in cell adhesion and migration.

Cellular Location

Membrane; Single-pass type I membrane protein. Cell projection, filopodium. Cytoplasm, cell cortex. Cell projection, microvillus. Note=Colocalizes with F-actin in filopodia, cellular cortex and microvilli of the apical cell surface

Tissue Location

Expressed at moderate levels in monocytes, myeloid blood dendritic cells and granulocytes and at low levels in plasmacytoid blood dendritic cells, monocyte-derived macrophages and monocyte-derived dendritic cells, with no expression detected in T- lymphocytes, B-lymphocytes

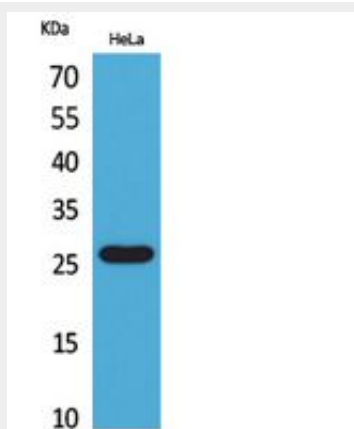
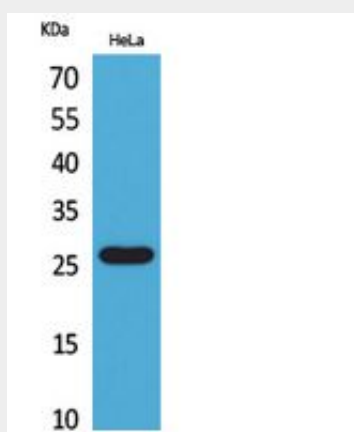
and natural killer cells (at protein level) Expressed widely in different tissues, with highest expression levels in liver, lung, peripheral blood leukocytes and spleen, and lowest levels in neuronal tissues, skeletal muscle and ovary. Isoform 2 and isoform 3 are expressed in malignant Hodgkin lymphoma cells called Hodgkin and Reed-Sternberg (HRS) cells.

DCL-1 Polyclonal Antibody - Protocols

Provided below are standard protocols that you may find useful for product applications.

- [Western Blot](#)
- [Blocking Peptides](#)
- [Dot Blot](#)
- [Immunohistochemistry](#)
- [Immunofluorescence](#)
- [Immunoprecipitation](#)
- [Flow Cytometry](#)
- [Cell Culture](#)

DCL-1 Polyclonal Antibody - Images



DCL-1 Polyclonal Antibody - Background

Potential multifunctional C-type lectin receptor that may play roles in endocytosis and

phagocytosis as well as in cell adhesion and migration.