

CMTM5 Polyclonal Antibody
Catalog # AP73668**Specification**

CMTM5 Polyclonal Antibody - Product Information

Application	WB, IHC-P
Primary Accession	Q96DZ9
Reactivity	Human
Host	Rabbit
Clonality	Polyclonal

CMTM5 Polyclonal Antibody - Additional Information**Gene ID** 116173**Other Names**

CMTM5; CKLFSF5; CKLF-like MARVEL transmembrane domain-containing protein 5; Chemokine-like factor superfamily member 5

Dilution

WB~~Western Blot: 1/500 - 1/2000. IHC-p: 1/100-1/300. ELISA: 1/20000. Not yet tested in other applications.

IHC-P~~N/A

Format

Liquid in PBS containing 50% glycerol, 0.5% BSA and 0.09% (W/V) sodium azide.

Storage Conditions

-20°C

CMTM5 Polyclonal Antibody - Protein Information**Name** CMTM5**Synonyms** CKLFSF5**Cellular Location**

Membrane; Multi-pass membrane protein.

Tissue Location

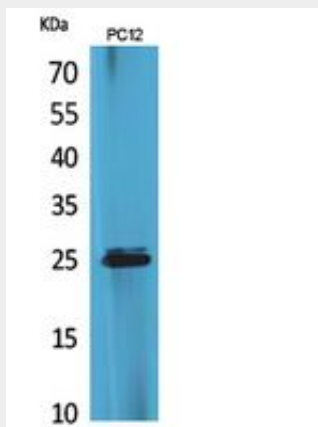
Highly expressed in the brain.

CMTM5 Polyclonal Antibody - Protocols

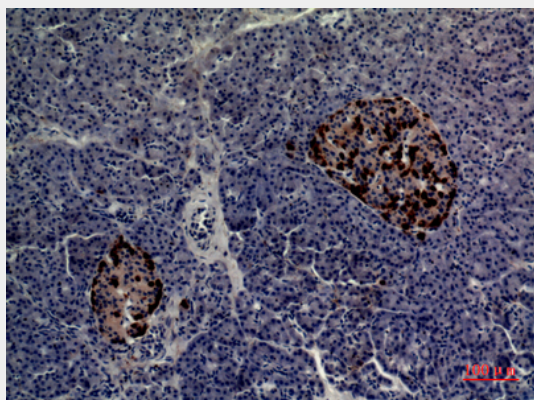
Provided below are standard protocols that you may find useful for product applications.

- [Western Blot](#)
- [Blocking Peptides](#)
- [Dot Blot](#)
- [Immunohistochemistry](#)
- [Immunofluorescence](#)
- [Immunoprecipitation](#)
- [Flow Cytometry](#)
- [Cell Culture](#)

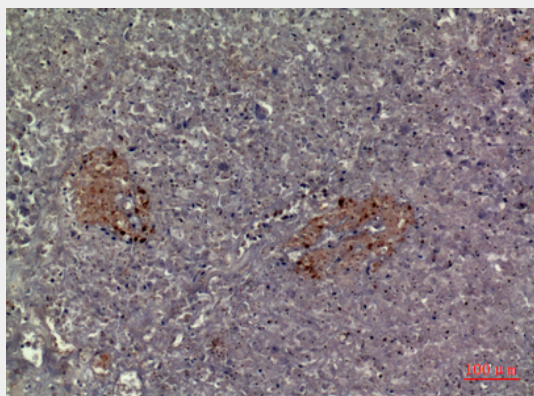
CMTM5 Polyclonal Antibody - Images



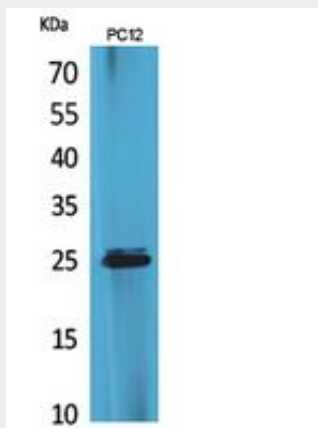
Western Blot analysis of PC12 cells using CMTM5 Polyclonal Antibody.. Secondary antibody was diluted at 1:20000



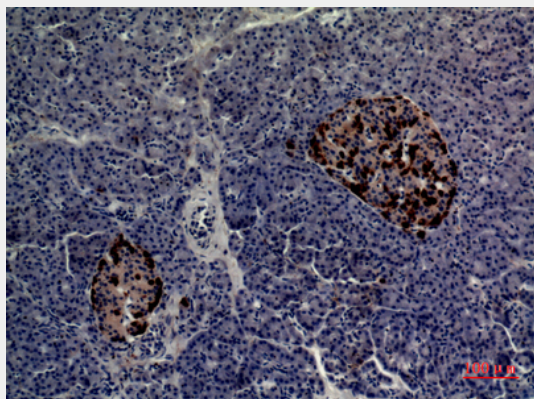
Immunohistochemical analysis of paraffin-embedded human-pancreas, antibody was diluted at 1:100



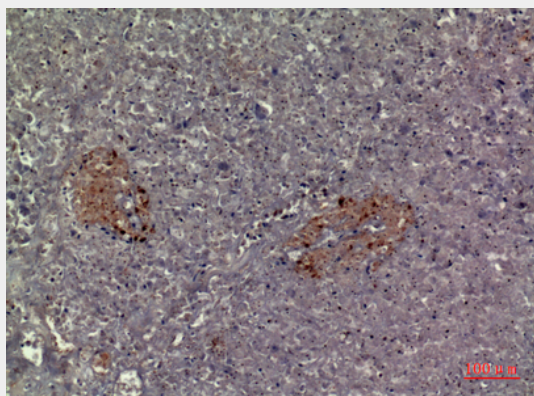
Immunohistochemical analysis of paraffin-embedded human-pancreas, antibody was diluted at 1:100



Western Blot analysis of PC12 cells using CMTM5 Polyclonal Antibody.. Secondary antibody was diluted at 1:20000



Immunohistochemical analysis of paraffin-embedded human-pancreas, antibody was diluted at 1:100



Immunohistochemical analysis of paraffin-embedded human-pancreas, antibody was diluted at 1:100