

SERPINH1 Antibody (C-term)
Purified Rabbit Polyclonal Antibody (Pab)
Catalog # AP7366b**Specification**

SERPINH1 Antibody (C-term) - Product Information

Application	FC, IHC-P, WB,E
Primary Accession	P50454
Other Accession	P29457 , P19324 , P13731 , Q2KJH6
Reactivity	Human
Predicted	Bovine, Chicken, Mouse, Rat
Host	Rabbit
Clonality	Polyclonal
Isotype	Rabbit IgG
Calculated MW	46441
Antigen Region	390-418

SERPINH1 Antibody (C-term) - Additional Information**Gene ID** 871**Other Names**

Serpin H1, 47 kDa heat shock protein, Arsenic-transactivated protein 3, AsTP3, Cell proliferation-inducing gene 14 protein, Collagen-binding protein, Colligin, Rheumatoid arthritis-related antigen RA-A47, SERPINH1, CBP1, CBP2, HSP47, SERPINH2

Target/Specificity

This SERPINH1 antibody is generated from rabbits immunized with a KLH conjugated synthetic peptide between 390-418 amino acids from the C-terminal region of human SERPINH1.

Dilution

FC~~1:10~50

IHC-P~~1:50~100

WB~~1:1000

E~~Use at an assay dependent concentration.

Format

Purified polyclonal antibody supplied in PBS with 0.09% (W/V) sodium azide. This antibody is prepared by Saturated Ammonium Sulfate (SAS) precipitation followed by dialysis against PBS.

Storage

Maintain refrigerated at 2-8°C for up to 2 weeks. For long term storage store at -20°C in small aliquots to prevent freeze-thaw cycles.

Precautions

SERPINH1 Antibody (C-term) is for research use only and not for use in diagnostic or therapeutic procedures.

SERPINH1 Antibody (C-term) - Protein Information

Name SERPINH1

Synonyms CBP1, CBP2, HSP47, SERPINH2

Function Binds specifically to collagen. Could be involved as a chaperone in the biosynthetic pathway of collagen.

Cellular Location

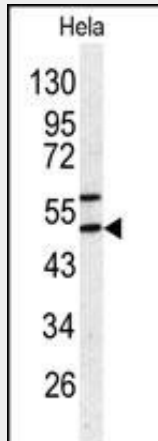
Endoplasmic reticulum lumen.

SERPINH1 Antibody (C-term) - Protocols

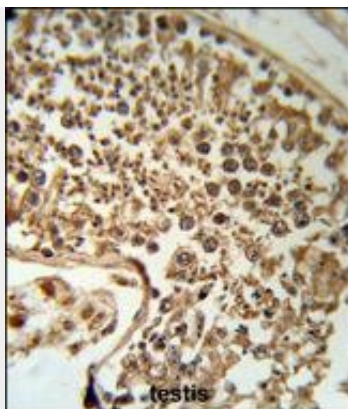
Provided below are standard protocols that you may find useful for product applications.

- [Western Blot](#)
- [Blocking Peptides](#)
- [Dot Blot](#)
- [Immunohistochemistry](#)
- [Immunofluorescence](#)
- [Immunoprecipitation](#)
- [Flow Cytometry](#)
- [Cell Culture](#)

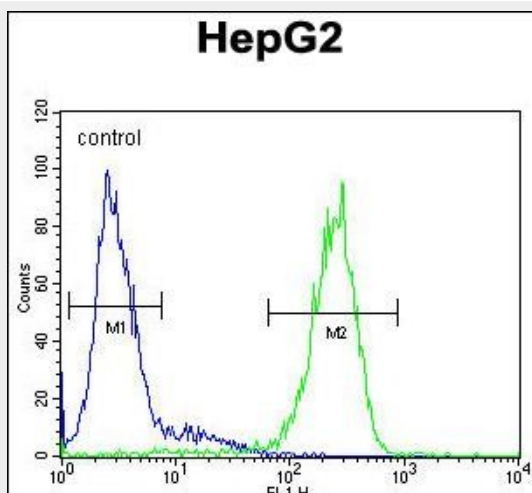
SERPINH1 Antibody (C-term) - Images



Western blot analysis of SERPINH1 antibody (C-term) (Cat.# AP7366b) in HeLa cell line lysates (35ug/lane). SERPINH1 (arrow) was detected using the purified Pab.



SERPINH1 Antibody (C-term) (RB18953) IHC analysis in formalin fixed and paraffin embedded human testis tissue followed by peroxidase conjugation of the secondary antibody and DAB staining. This data demonstrates the use of the SERPINH1 Antibody (C-term) for immunohistochemistry. Clinical relevance has not been evaluated.



SERPINH1 Antibody (C-term) (Cat. #AP7366b) flow cytometric analysis of HepG2 cells (right histogram) compared to a negative control cell (left histogram). FITC-conjugated goat-anti-rabbit secondary antibodies were used for the analysis.

SERPINH1 Antibody (C-term) - Background

SERPINH1 is a member of the serpin superfamily of serine proteinase inhibitors. Its expression is induced by heat shock. The protein localizes to the endoplasmic reticulum lumen and binds collagen; thus it is thought to be a molecular chaperone involved in the maturation of collagen molecules. Autoantibodies to this protein have been found in patients with rheumatoid arthritis.

SERPINH1 Antibody (C-term) - References

Araki, K., Br. J. Cancer 101 (3), 492-497 (2009)
Katagata, Y., J. Dermatol. Sci. 49 (1), 33-38 (2008)