

CRF-R1 Polyclonal Antibody
Catalog # AP73673**Specification**

CRF-R1 Polyclonal Antibody - Product Information

Application	WB, IHC-P
Primary Accession	P34998
Reactivity	Human, Mouse, Rat
Host	Rabbit
Clonality	Polyclonal

CRF-R1 Polyclonal Antibody - Additional Information**Gene ID** 1394**Other Names**

CRHR1; CRFR; CRFR1; CRHR; Corticotropin-releasing factor receptor 1; CRF-R-1; CRF-R1; CRFR-1; Corticotropin-releasing hormone receptor 1; CRH-R-1; CRH-R1

Dilution

WB~~Western Blot: 1/500 - 1/2000. IHC-p: 1/100-1/300. ELISA: 1/20000. Not yet tested in other applications.

IHC-P~~N/A

Format

Liquid in PBS containing 50% glycerol, 0.5% BSA and 0.09% (W/V) sodium azide.

Storage Conditions

-20°C

CRF-R1 Polyclonal Antibody - Protein Information**Name** CRHR1 ([HGNC:2357](#))**Function**

G-protein coupled receptor for CRH (corticotropin-releasing factor) and UCN (urocortin). Has high affinity for CRH and UCN. Ligand binding causes a conformation change that triggers signaling via guanine nucleotide-binding proteins (G proteins) and down-stream effectors, such as adenylate cyclase. Promotes the activation of adenylate cyclase, leading to increased intracellular cAMP levels. Inhibits the activity of the calcium channel CACNA1H. Required for normal embryonic development of the adrenal gland and for normal hormonal responses to stress. Plays a role in the response to anxiogenic stimuli.

Cellular Location

Cell membrane; Multi-pass membrane protein. Endosome. Note=Agonist-binding promotes endocytosis

Tissue Location

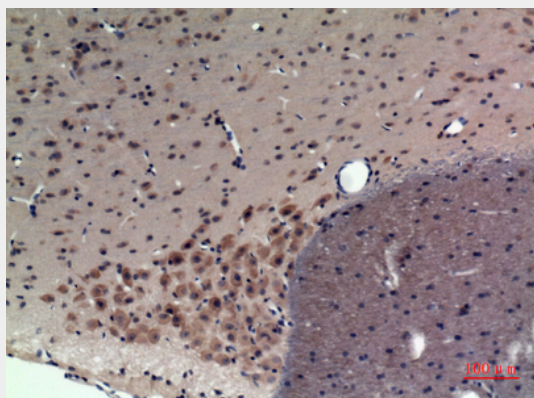
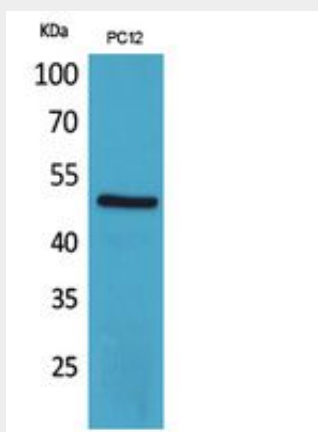
Predominantly expressed in the cerebellum, pituitary, cerebral cortex and olfactory lobe

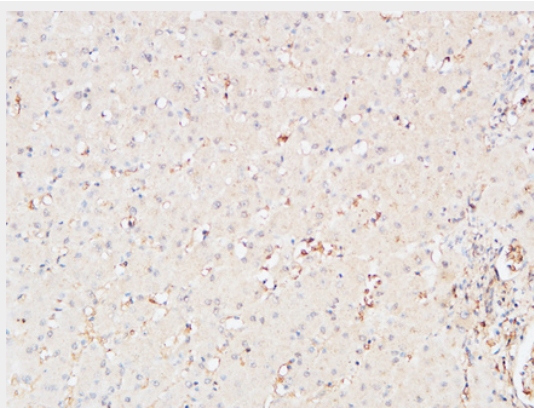
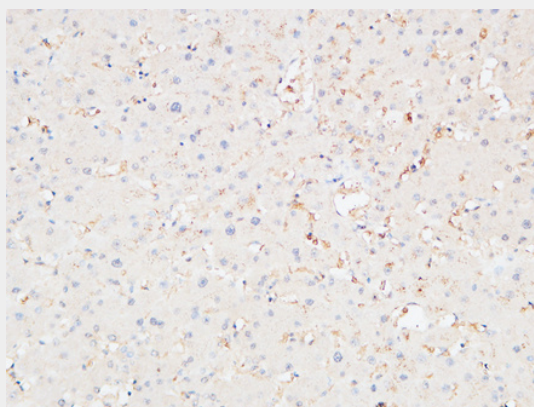
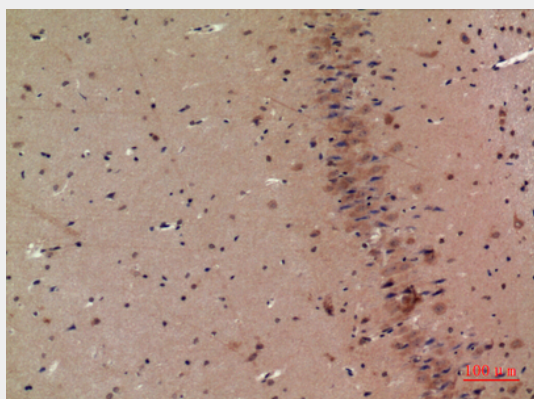
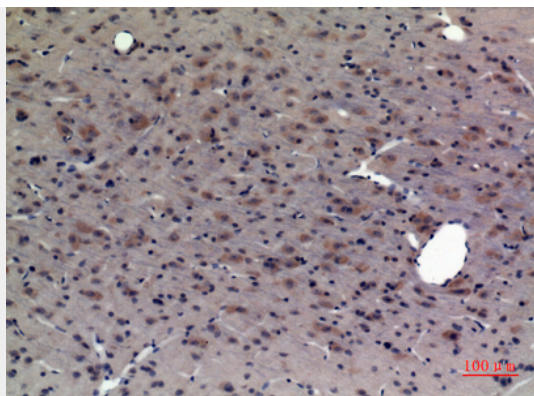
CRF-RI Polyclonal Antibody - Protocols

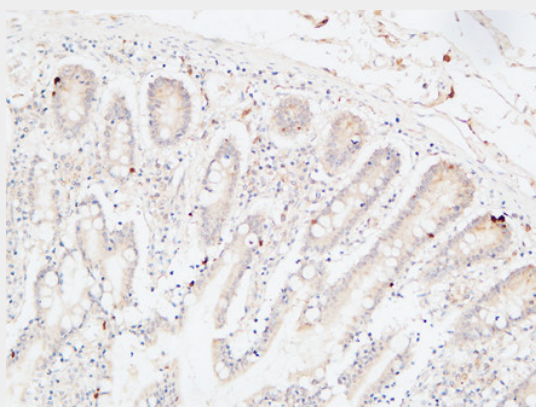
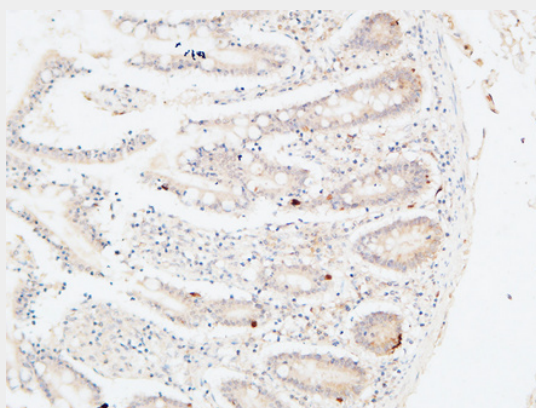
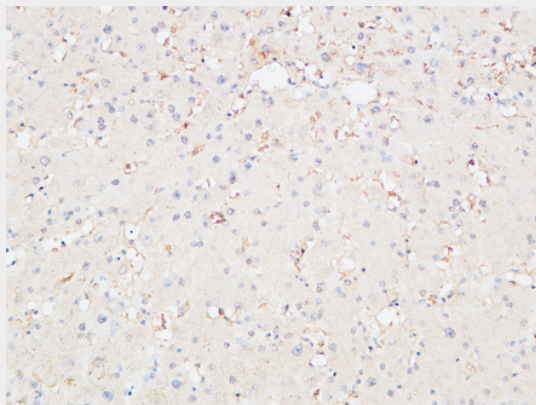
Provided below are standard protocols that you may find useful for product applications.

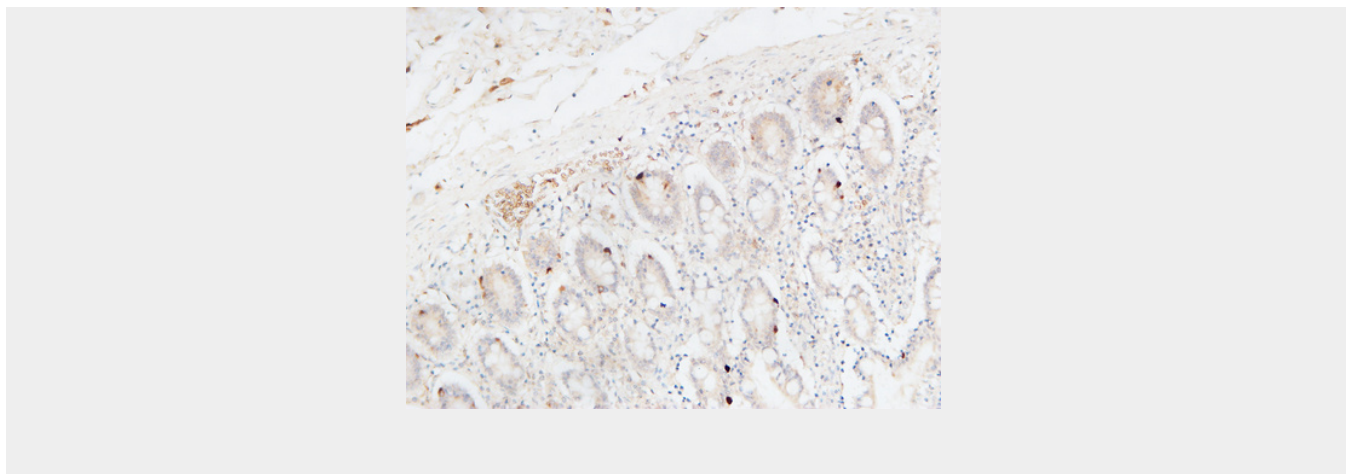
- [Western Blot](#)
- [Blocking Peptides](#)
- [Dot Blot](#)
- [Immunohistochemistry](#)
- [Immunofluorescence](#)
- [Immunoprecipitation](#)
- [Flow Cytometry](#)
- [Cell Culture](#)

CRF-RI Polyclonal Antibody - Images









CRF-R1 Polyclonal Antibody - Background

G-protein coupled receptor for CRH (corticotropin- releasing factor) and UCN (urocortin). Has high affinity for CRH and UCN. Ligand binding causes a conformation change that triggers signaling via guanine nucleotide-binding proteins (G proteins) and down-stream effectors, such as adenylate cyclase. Promotes the activation of adenylate cyclase, leading to increased intracellular cAMP levels. Inhibits the activity of the calcium channel CACNA1H. Required for normal embryonic development of the adrenal gland and for normal hormonal responses to stress. Plays a role in the response to anxiogenic stimuli.