

TRPC3 Polyclonal Antibody
Catalog # AP73703**Specification**

TRPC3 Polyclonal Antibody - Product Information

Application	WB, IHC-P
Primary Accession	Q13507
Reactivity	Human, Mouse, Rat
Host	Rabbit
Clonality	Polyclonal

TRPC3 Polyclonal Antibody - Additional Information**Gene ID** 7222**Other Names**

TRPC3; TRP3; Short transient receptor potential channel 3; TrpC3; Transient receptor protein 3; TRP-3; hTrp-3; hTrp3

Dilution

WB~~Western Blot: 1/500 - 1/2000. IHC-p: 1:100-1:300. ELISA: 1/20000. Not yet tested in other applications.

IHC-P~~N/A

Format

Liquid in PBS containing 50% glycerol, 0.5% BSA and 0.09% (W/V) sodium azide.

Storage Conditions

-20°C

TRPC3 Polyclonal Antibody - Protein Information**Name** TRPC3**Synonyms** TRP3**Function**

Forms a receptor-activated non-selective calcium permeant cation channel (PubMed:29726814, PubMed:30139744, PubMed:35051376, PubMed:9417057, PubMed:9930701, PubMed:10611319).

Cellular Location

Cell membrane; Multi-pass membrane protein

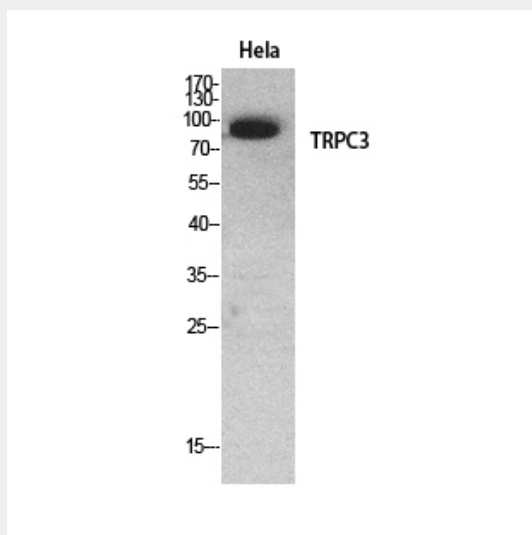
Tissue Location

Expressed predominantly in brain and at much lower levels in ovary, colon, small intestine, lung, prostate, placenta and testis

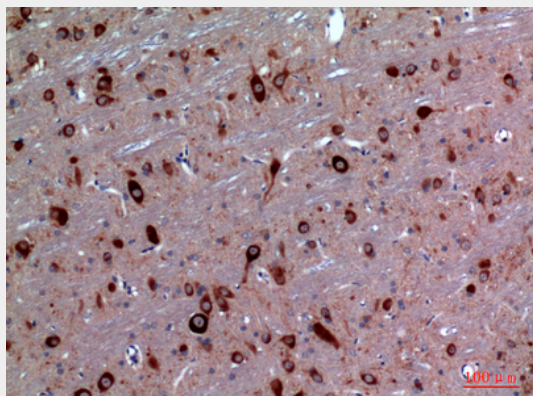
TRPC3 Polyclonal Antibody - Protocols

Provided below are standard protocols that you may find useful for product applications.

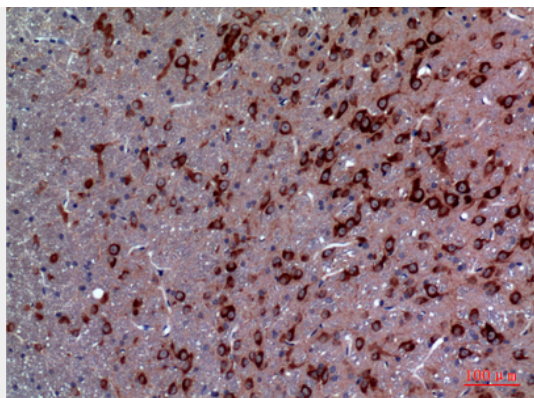
- [Western Blot](#)
- [Blocking Peptides](#)
- [Dot Blot](#)
- [Immunohistochemistry](#)
- [Immunofluorescence](#)
- [Immunoprecipitation](#)
- [Flow Cytometry](#)
- [Cell Culture](#)

TRPC3 Polyclonal Antibody - Images

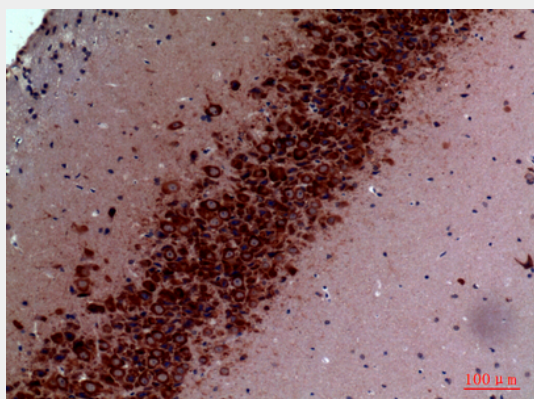
Western Blot analysis of HeLa cells using TRPC3 Polyclonal Antibody.. Secondary antibody was diluted at 1:20000



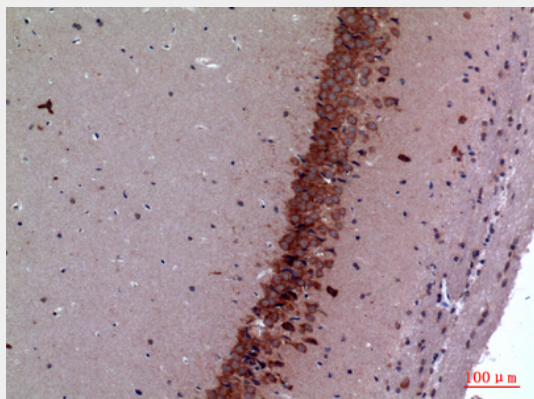
Immunohistochemical analysis of paraffin-embedded rat-brain, antibody was diluted at 1:100



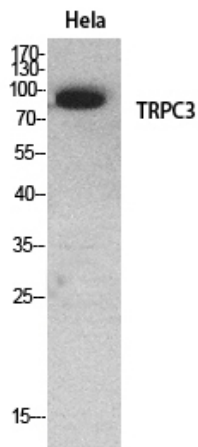
Immunohistochemical analysis of paraffin-embedded rat-brain, antibody was diluted at 1:100



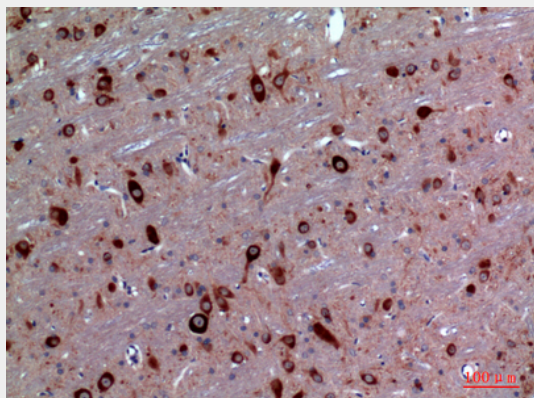
Immunohistochemical analysis of paraffin-embedded mouse-brain, antibody was diluted at 1:100



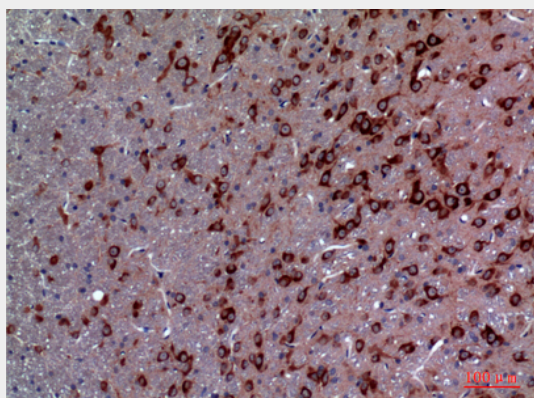
Immunohistochemical analysis of paraffin-embedded mouse-brain, antibody was diluted at 1:100



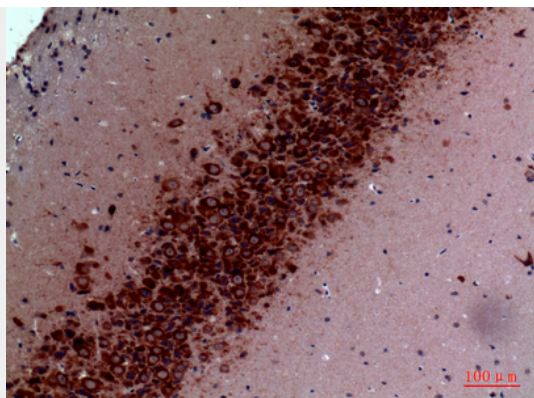
Western Blot analysis of HeLa cells using TRPC3 Polyclonal Antibody.. Secondary antibody was diluted at 1:20000



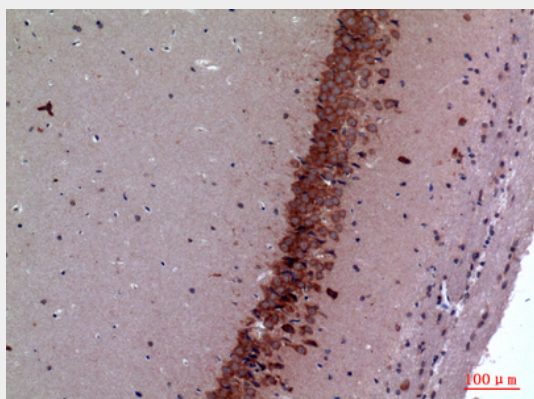
Immunohistochemical analysis of paraffin-embedded rat-brain, antibody was diluted at 1:100



Immunohistochemical analysis of paraffin-embedded rat-brain, antibody was diluted at 1:100



Immunohistochemical analysis of paraffin-embedded mouse-brain, antibody was diluted at 1:100



Immunohistochemical analysis of paraffin-embedded mouse-brain, antibody was diluted at 1:100

TRPC3 Polyclonal Antibody - Background

Thought to form a receptor-activated non-selective calcium permeant cation channel. Probably is operated by a phosphatidylinositol second messenger system activated by receptor tyrosine kinases or G-protein coupled receptors. Activated by diacylglycerol (DAG) in a membrane-delimited fashion, independently of protein kinase C, and by inositol 1,4,5- triphosphate receptors (ITPR) with bound IP3. May also be activated by internal calcium store depletion.