

**Netrin-1 Polyclonal Antibody**  
**Catalog # AP73705****Specification**

---

**Netrin-1 Polyclonal Antibody - Product Information**

Application	WB, IHC-P
Primary Accession	<a href="#">O95631</a>
Reactivity	Human, Mouse, Rat
Host	Rabbit
Clonality	Polyclonal

**Netrin-1 Polyclonal Antibody - Additional Information****Gene ID** 9423**Other Names**

NTN1; NTN1L; Netrin-1; Epididymis tissue protein Li 131P

**Dilution**

WB~~Western Blot: 1/500 - 1/2000. IHC-p: 1:100-1:300. ELISA: 1/20000. Not yet tested in other applications.

IHC-P~~N/A

**Format**

Liquid in PBS containing 50% glycerol, 0.5% BSA and 0.09% (W/V) sodium azide.

**Storage Conditions**

-20°C

**Netrin-1 Polyclonal Antibody - Protein Information****Name** NTN1**Synonyms** NTN1L**Function**

Netrins control guidance of CNS commissural axons and peripheral motor axons. Its association with either DCC or some UNC5 receptors will lead to axon attraction or repulsion, respectively. Binding to UNC5C might cause dissociation of UNC5C from polymerized TUBB3 in microtubules and thereby lead to increased microtubule dynamics and axon repulsion (PubMed:<a href="http://www.uniprot.org/citations/28483977" target="\_blank">28483977</a>). Involved in dorsal root ganglion axon projection towards the spinal cord (PubMed:<a href="http://www.uniprot.org/citations/28483977" target="\_blank">28483977</a>). It also serves as a survival factor via its association with its receptors which prevent the initiation of apoptosis. Involved in tumorigenesis by regulating apoptosis (PubMed:<a href="http://www.uniprot.org/citations/15343335" target="\_blank">15343335</a>).

**Cellular Location**

Secreted. Cytoplasm. Note=Mainly secreted

#### **Tissue Location**

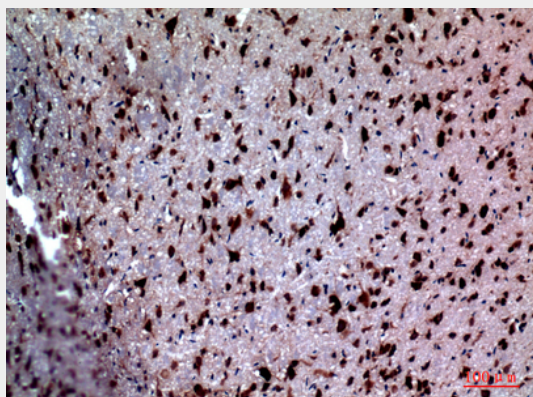
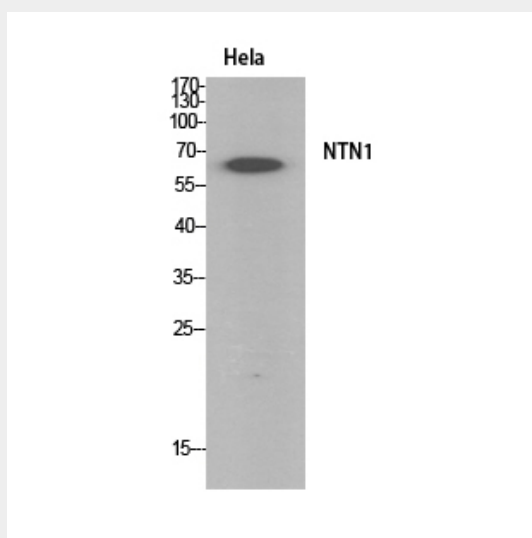
Widely expressed in normal adult tissues with highest levels in heart, small intestine, colon, liver and prostate. Reduced expression in brain tumors and neuroblastomas. Expressed in epididymis (at protein level).

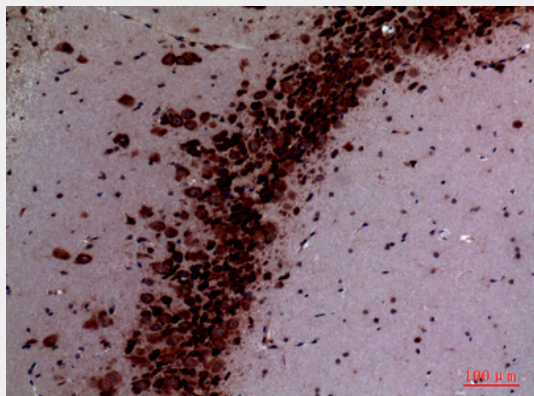
#### **Netrin-1 Polyclonal Antibody - Protocols**

Provided below are standard protocols that you may find useful for product applications.

- [Western Blot](#)
- [Blocking Peptides](#)
- [Dot Blot](#)
- [Immunohistochemistry](#)
- [Immunofluorescence](#)
- [Immunoprecipitation](#)
- [Flow Cytometry](#)
- [Cell Culture](#)

#### **Netrin-1 Polyclonal Antibody - Images**





### **Netrin-1 Polyclonal Antibody - Background**

Netrins control guidance of CNS commissural axons and peripheral motor axons. Its association with either DCC or some UNC5 receptors will lead to axon attraction or repulsion, respectively. It also serve as a survival factor via its association with its receptors which prevent the initiation of apoptosis. Involved in tumorigenesis by regulating apoptosis.