

Prolactin Polyclonal Antibody
Catalog # AP73707**Specification**

Prolactin Polyclonal Antibody - Product Information

Application	WB, IHC-P
Primary Accession	P01236
Reactivity	Human
Host	Rabbit
Clonality	Polyclonal

Prolactin Polyclonal Antibody - Additional Information**Gene ID** 5617**Other Names**

PRL; Prolactin; PRL

Dilution

WB~~Western Blot: 1/500 - 1/2000. IHC-p: 1:100-1:300. ELISA: 1/20000. Not yet tested in other applications.

IHC-P~~N/A

Format

Liquid in PBS containing 50% glycerol, 0.5% BSA and 0.09% (W/V) sodium azide.

Storage Conditions

-20°C

Prolactin Polyclonal Antibody - Protein Information**Name** PRL**Function**

Prolactin acts primarily on the mammary gland by promoting lactation.

Cellular Location

Secreted.

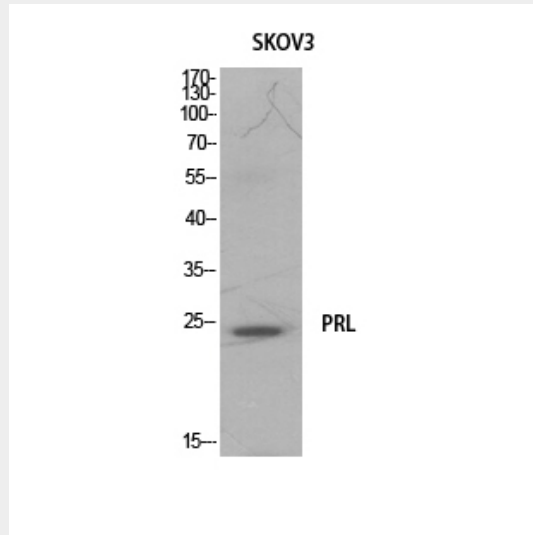
Prolactin Polyclonal Antibody - Protocols

Provided below are standard protocols that you may find useful for product applications.

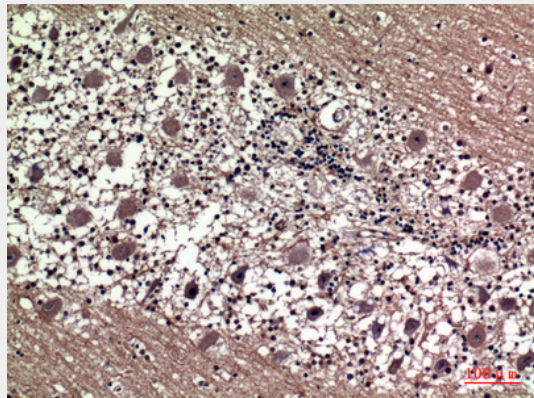
- [Western Blot](#)
- [Blocking Peptides](#)
- [Dot Blot](#)

- [Immunohistochemistry](#)
- [Immunofluorescence](#)
- [Immunoprecipitation](#)
- [Flow Cytometry](#)
- [Cell Culture](#)

Prolactin Polyclonal Antibody - Images



Western Blot analysis of SKOV3 cells using Prolactin Polyclonal Antibody.. Secondary antibody was diluted at 1:20000



Immunohistochemical analysis of paraffin-embedded human-brain, antibody was diluted at 1:100

Prolactin Polyclonal Antibody - Background

Prolactin acts primarily on the mammary gland by promoting lactation.