

Bcl-6 Antibody (C-term)
Affinity Purified Rabbit Polyclonal Antibody (Pab)
Catalog # AP7372b**Specification**

Bcl-6 Antibody (C-term) - Product Information

Application	FC, IHC-P, WB,E
Primary Accession	P41182
Other Accession	P41183
Reactivity	Human, Mouse
Host	Rabbit
Clonality	Polyclonal
Isotype	Rabbit IgG
Antigen Region	519-547

Bcl-6 Antibody (C-term) - Additional Information**Gene ID** 604**Other Names**

B-cell lymphoma 6 protein, BCL-6, B-cell lymphoma 5 protein, BCL-5, Protein LAZ-3, Zinc finger and BTB domain-containing protein 27, Zinc finger protein 51, BCL6, BCL5, LAZ3, ZBTB27, ZNF51

Target/Specificity

This Bcl-6 antibody is generated from rabbits immunized with a KLH conjugated synthetic peptide between 519-547 amino acids from the C-terminal region of human Bcl-6.

Dilution

FC~~1:10~50

IHC-P~~1:10~50

WB~~1:1000

E~~Use at an assay dependent concentration.

Format

Purified polyclonal antibody supplied in PBS with 0.09% (W/V) sodium azide. This antibody is purified through a protein A column, followed by peptide affinity purification.

Storage

Maintain refrigerated at 2-8°C for up to 2 weeks. For long term storage store at -20°C in small aliquots to prevent freeze-thaw cycles.

Precautions

Bcl-6 Antibody (C-term) is for research use only and not for use in diagnostic or therapeutic procedures.

Bcl-6 Antibody (C-term) - Protein Information**Name** BCL6

Synonyms BCL5, LAZ3, ZBTB27, ZNF51

Function Transcriptional repressor mainly required for germinal center (GC) formation and antibody affinity maturation which has different mechanisms of action specific to the lineage and biological functions. Forms complexes with different corepressors and histone deacetylases to repress the transcriptional expression of different subsets of target genes. Represses its target genes by binding directly to the DNA sequence 5'-TTCCTAGAA-3' (BCL6-binding site) or indirectly by repressing the transcriptional activity of transcription factors. In GC B-cells, represses genes that function in differentiation, inflammation, apoptosis and cell cycle control, also autoregulates its transcriptional expression and up-regulates, indirectly, the expression of some genes important for GC reactions, such as AICDA, through the repression of microRNAs expression, like miR155. An important function is to allow GC B-cells to proliferate very rapidly in response to T- cell dependent antigens and tolerate the physiological DNA breaks required for immunoglobulin class switch recombination and somatic hypermutation without inducing a p53/TP53-dependent apoptotic response. In follicular helper CD4(+) T-cells (T(FH) cells), promotes the expression of T(FH)-related genes but inhibits the differentiation of T(H)1, T(H)2 and T(H)17 cells. Also required for the establishment and maintenance of immunological memory for both T- and B-cells. Suppresses macrophage proliferation through competition with STAT5 for STAT- binding motifs binding on certain target genes, such as CCL2 and CCND2. In response to genotoxic stress, controls cell cycle arrest in GC B- cells in both p53/TP53-dependendent and -independent manners. Besides, also controls neurogenesis through the alteration of the composition of NOTCH-dependent transcriptional complexes at selective NOTCH targets, such as HES5, including the recruitment of the deacetylase SIRT1 and resulting in an epigenetic silencing leading to neuronal differentiation.

Cellular Location

Nucleus

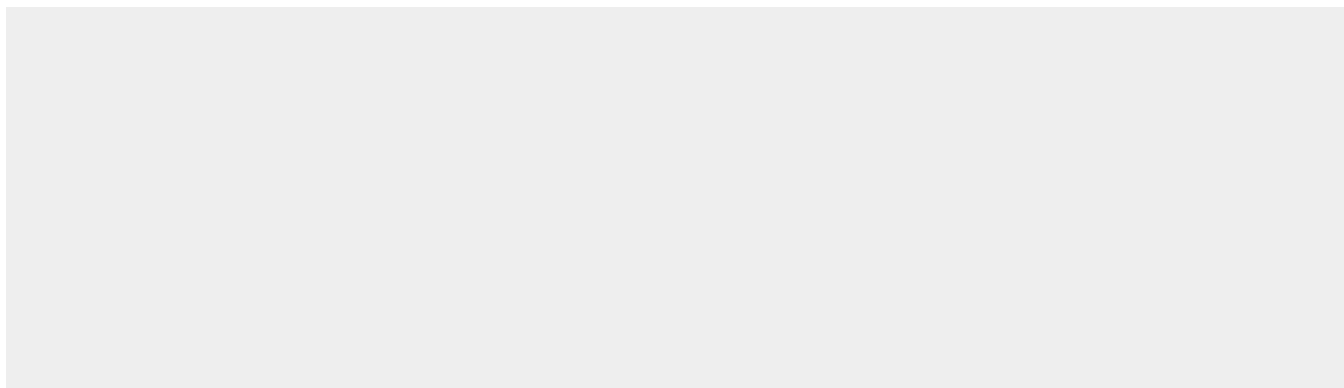
Tissue Location

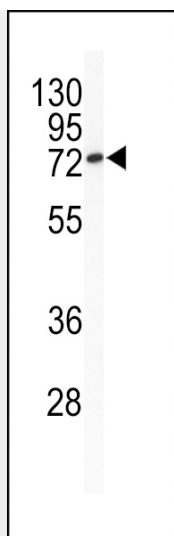
Expressed in germinal center T- and B-cells and in primary immature dendritic cells.

Bcl-6 Antibody (C-term) - Protocols

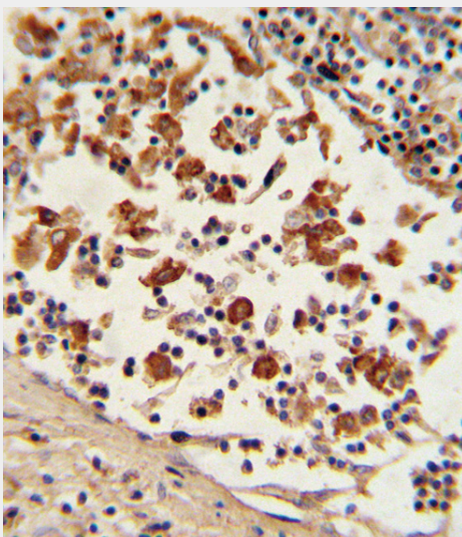
Provided below are standard protocols that you may find useful for product applications.

- [Western Blot](#)
- [Blocking Peptides](#)
- [Dot Blot](#)
- [Immunohistochemistry](#)
- [Immunofluorescence](#)
- [Immunoprecipitation](#)
- [Flow Cytometry](#)
- [Cell Culture](#)

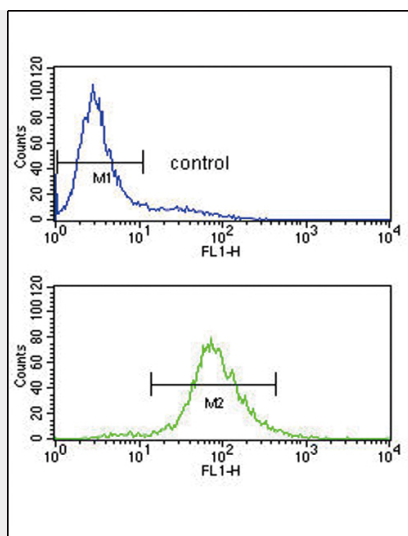
Bcl-6 Antibody (C-term) - Images



Western blot analysis of Bcl-6 Antibody (C-term) (Cat.# AP7372b) in mouse cerebellum tissue lysates (35ug/lane). BCL6 (arrow) was detected using the purified Pab.



Formalin-fixed and paraffin-embedded human lymph tissue with Bcl-6 Antibody (C-term), which was peroxidase-conjugated to the secondary antibody, followed by DAB staining. This data demonstrates the use of this antibody for immunohistochemistry; clinical relevance has not been evaluated.



Bcl-6 Antibody (C-term) (Cat. #AP7372b) flow cytometry analysis of Jurkat cells (bottom histogram) compared to a negative control cell (top histogram). FITC-conjugated goat-anti-rabbit secondary antibodies were used for the analysis.

Bcl-6 Antibody (C-term) - Background

BCL6 is a zinc finger transcription factor and contains an N-terminal POZ domain. This protein acts as a sequence-specific repressor of transcription, and has been shown to modulate the transcription of START-dependent IL-4 responses of B cells. This protein can interact with a variety of POZ-containing proteins that function as transcription corepressors.

Bcl-6 Antibody (C-term) - References

Saito, M., Proc. Natl. Acad. Sci. U.S.A. 106 (27), 11294-11299 (2009)
Ci, W., Blood 113 (22), 5536-5548 (2009)