

IGFBP1 Polyclonal Antibody
Catalog # AP73750**Specification****IGFBP1 Polyclonal Antibody - Product Information**

Application	WB, IHC-P
Primary Accession	P08833
Reactivity	Human
Host	Rabbit
Clonality	Polyclonal

IGFBP1 Polyclonal Antibody - Additional Information**Gene ID** 3484**Other Names**

IGFBP1; IBP1; Insulin-like growth factor-binding protein 1; IBP-1; IGF-binding protein 1; IGFBP-1; Placental protein 12; PP12

Dilution

WB~~Western Blot: 1/500 - 1/2000. IHC-p: 1:100-1:300. ELISA: 1/10000. Not yet tested in other applications.

IHC-P~~N/A

Format

Liquid in PBS containing 50% glycerol, 0.5% BSA and 0.09% (W/V) sodium azide.

Storage Conditions

-20°C

IGFBP1 Polyclonal Antibody - Protein Information**Name** IGFBP1**Synonyms** IBP1**Function**

Multifunctional protein that plays a critical role in regulating the availability of IGFs such as IGF1 and IGF2 to their receptors and thereby regulates IGF-mediated cellular processes including cell migration, proliferation, differentiation or apoptosis in a cell-type specific manner (PubMed:11397844, PubMed:15972819). Also plays a positive role in cell migration by interacting with integrin ITGA5:ITGB1 through its RGD motif (PubMed:7504269). Mechanistically, binding to integrins leads to activation of focal adhesion kinase/PTK2 and stimulation of the mitogen-activated protein kinase (MAPK) pathway (PubMed:11397844). Regulates cardiomyocyte apoptosis by suppressing HIF-1alpha/HIF1A ubiquitination and subsequent

degradation (By similarity).

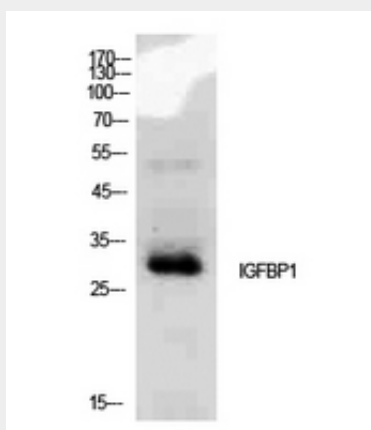
Cellular Location
Secreted.

IGFBP1 Polyclonal Antibody - Protocols

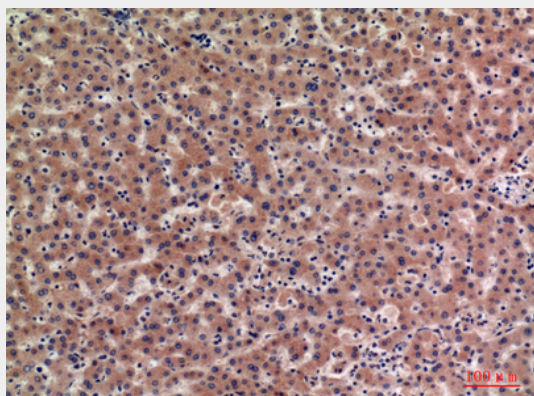
Provided below are standard protocols that you may find useful for product applications.

- [Western Blot](#)
- [Blocking Peptides](#)
- [Dot Blot](#)
- [Immunohistochemistry](#)
- [Immunofluorescence](#)
- [Immunoprecipitation](#)
- [Flow Cytometry](#)
- [Cell Culture](#)

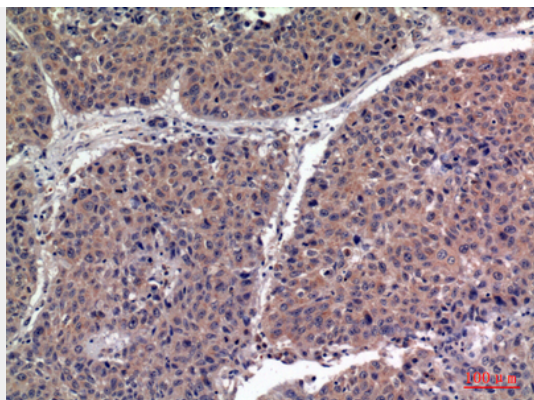
IGFBP1 Polyclonal Antibody - Images



Western Blot analysis of MCF7 cells using IGFBP1 Polyclonal Antibody.. Secondary antibody was diluted at 1:20000



Immunohistochemical analysis of paraffin-embedded human-liver, antibody was diluted at 1:100



Immunohistochemical analysis of paraffin-embedded human-lung, antibody was diluted at 1:100

IGFBP1 Polyclonal Antibody - Background

IGF-binding proteins prolong the half-life of the IGFs and have been shown to either inhibit or stimulate the growth promoting effects of the IGFs on cell culture. They alter the interaction of IGFs with their cell surface receptors. Promotes cell migration.