

PPP1R15B Polyclonal Antibody
Catalog # AP73754**Specification**

PPP1R15B Polyclonal Antibody - Product Information

Application	WB, IHC-P
Primary Accession	Q5SWA1
Reactivity	Human
Host	Rabbit
Clonality	Polyclonal

PPP1R15B Polyclonal Antibody - Additional Information**Gene ID** 84919**Other Names**

PPP1R15B; Protein phosphatase 1 regulatory subunit 15B

Dilution

WB~~Western Blot: 1/500 - 1/2000. IHC-p: 1:100-1:300. ELISA: 1/10000. Not yet tested in other applications.

IHC-P~~N/A

Format

Liquid in PBS containing 50% glycerol, 0.5% BSA and 0.09% (W/V) sodium azide.

Storage Conditions

-20°C

PPP1R15B Polyclonal Antibody - Protein Information**Name** PPP1R15B**Function**

Maintains low levels of EIF2S1 phosphorylation in unstressed cells by promoting its dephosphorylation by PP1.

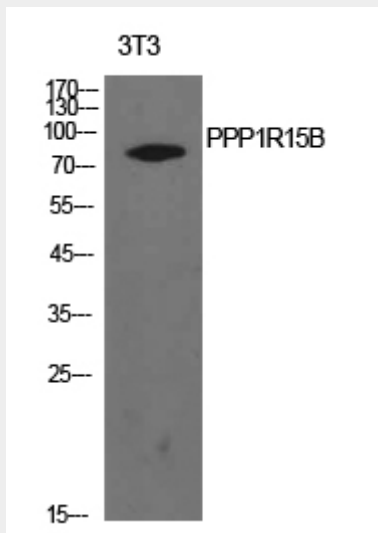
PPP1R15B Polyclonal Antibody - Protocols

Provided below are standard protocols that you may find useful for product applications.

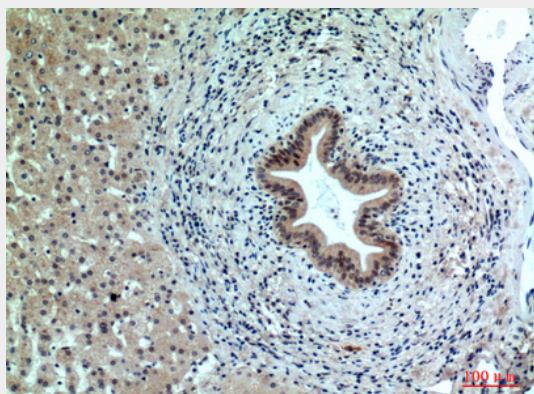
- [Western Blot](#)
- [Blocking Peptides](#)
- [Dot Blot](#)
- [Immunohistochemistry](#)
- [Immunofluorescence](#)

- [Immunoprecipitation](#)
- [Flow Cytometry](#)
- [Cell Culture](#)

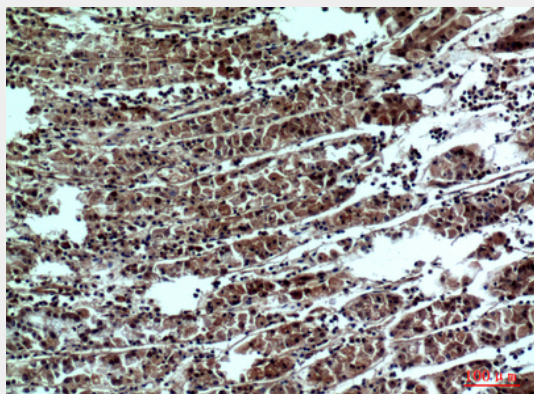
PPP1R15B Polyclonal Antibody - Images



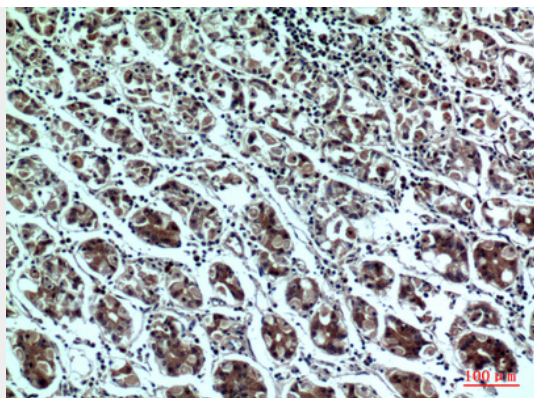
Western Blot analysis of NIH-3T3 cells using PPP1R15B Polyclonal Antibody.. Secondary antibody was diluted at 1:20000



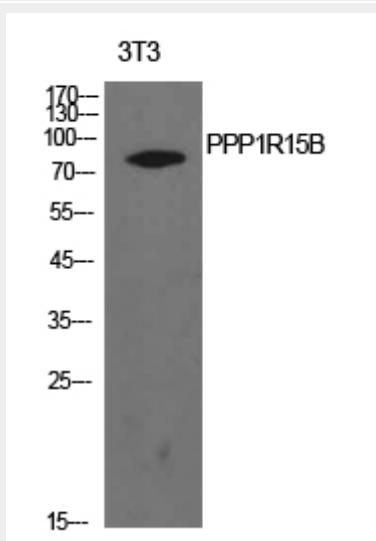
Immunohistochemical analysis of paraffin-embedded human-liver, antibody was diluted at 1:100



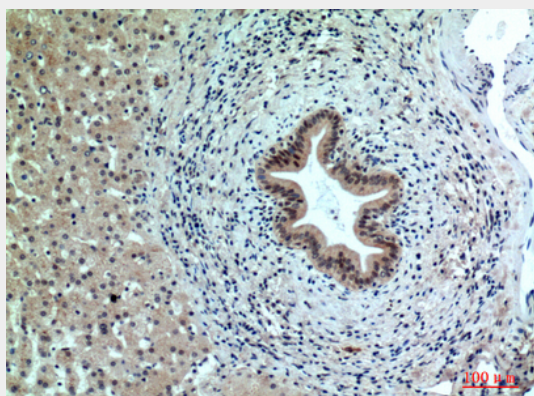
Immunohistochemical analysis of paraffin-embedded human-stomach, antibody was diluted at 1:100



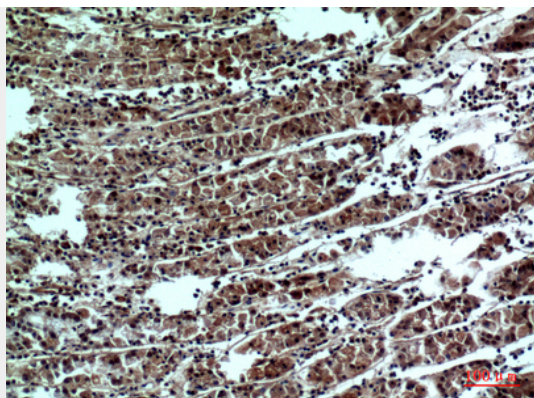
Immunohistochemical analysis of paraffin-embedded human-stomach, antibody was diluted at 1:100



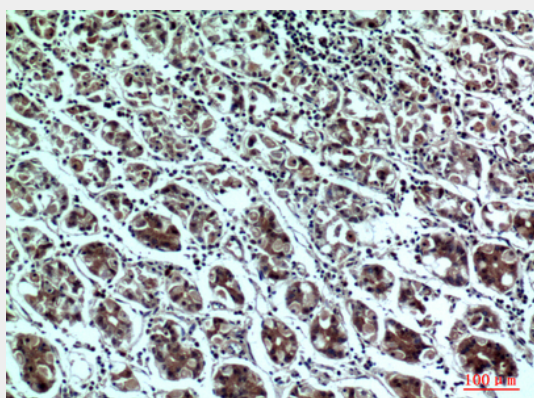
Western Blot analysis of NIH-3T3 cells using PPP1R15B Polyclonal Antibody.. Secondary antibody was diluted at 1:20000



Immunohistochemical analysis of paraffin-embedded human-liver, antibody was diluted at 1:100



Immunohistochemical analysis of paraffin-embedded human-stomach, antibody was diluted at 1:100



Immunohistochemical analysis of paraffin-embedded human-stomach, antibody was diluted at 1:100

PPP1R15B Polyclonal Antibody - Background

Maintains low levels of EIF2S1 phosphorylation in unstressed cells by promoting its dephosphorylation by PP1.