

PSGL-1 Polyclonal Antibody
Catalog # AP73755**Specification**

PSGL-1 Polyclonal Antibody - Product Information

Application	WB, IHC-P
Primary Accession	Q14242
Reactivity	Human
Host	Rabbit
Clonality	Polyclonal

PSGL-1 Polyclonal Antibody - Additional Information**Gene ID** 6404**Other Names**

SELPLG; P-selectin glycoprotein ligand 1; PSGL-1; Selectin P ligand; CD162

Dilution

WB~~Western Blot: 1/500 - 1/2000. IHC-p: 1:100-1:300. ELISA: 1/10000. Not yet tested in other applications.

IHC-P~~N/A

Format

Liquid in PBS containing 50% glycerol, 0.5% BSA and 0.09% (W/V) sodium azide.

Storage Conditions

-20°C

PSGL-1 Polyclonal Antibody - Protein Information**Name** SELPLG**Function**

A SLe(x)-type proteoglycan, which through high affinity, calcium-dependent interactions with E-, P- and L-selectins, mediates rapid rolling of leukocytes over vascular surfaces during the initial steps in inflammation. Critical for the initial leukocyte capture.

Cellular Location

Membrane; Single-pass type I membrane protein.

Tissue Location

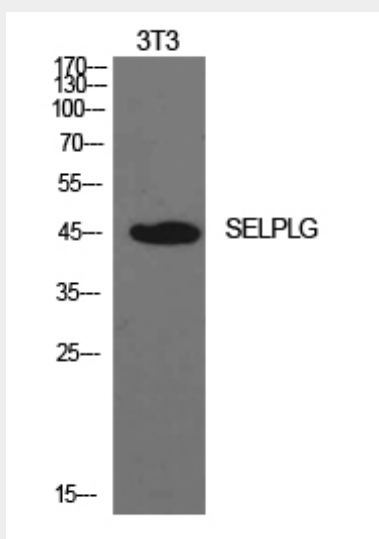
Expressed on neutrophils, monocytes and most lymphocytes

PSGL-1 Polyclonal Antibody - Protocols

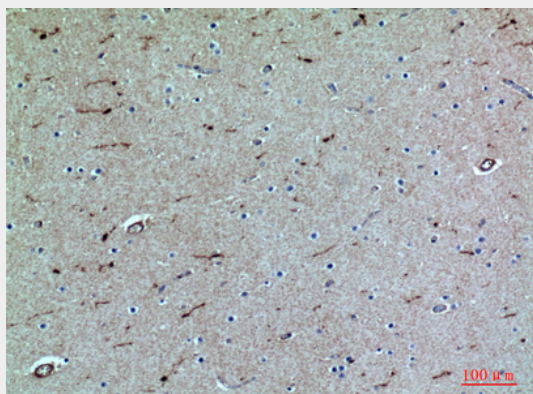
Provided below are standard protocols that you may find useful for product applications.

- [Western Blot](#)
- [Blocking Peptides](#)
- [Dot Blot](#)
- [Immunohistochemistry](#)
- [Immunofluorescence](#)
- [Immunoprecipitation](#)
- [Flow Cytometry](#)
- [Cell Culture](#)

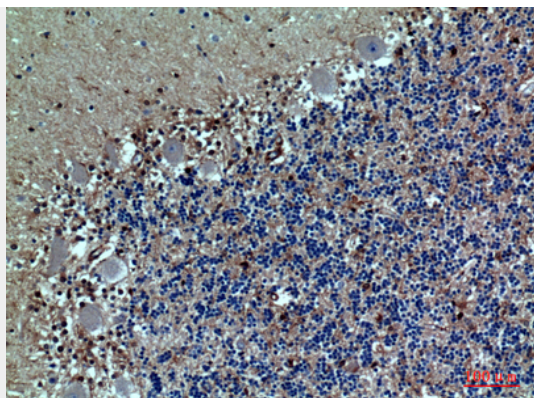
PSGL-1 Polyclonal Antibody - Images



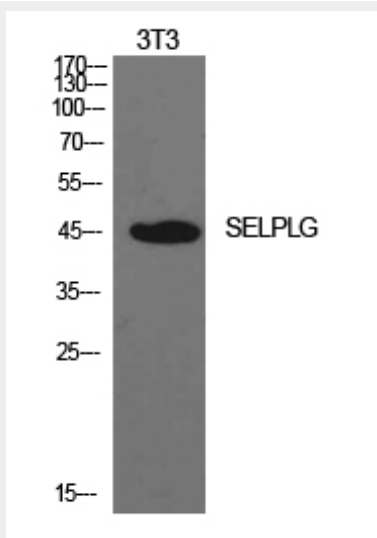
Western Blot analysis of NIH-3T3 cells using PSGL-1 Polyclonal Antibody.. Secondary antibody was diluted at 1:20000



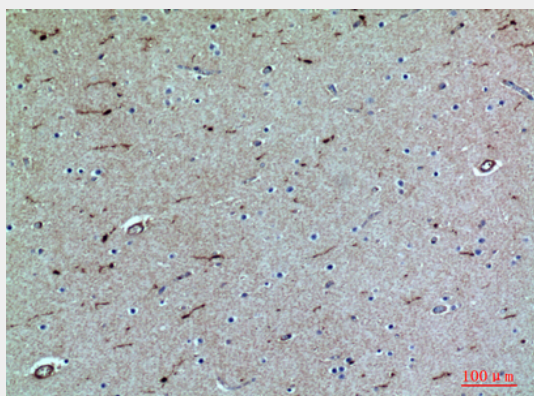
Immunohistochemical analysis of paraffin-embedded human-brain, antibody was diluted at 1:100



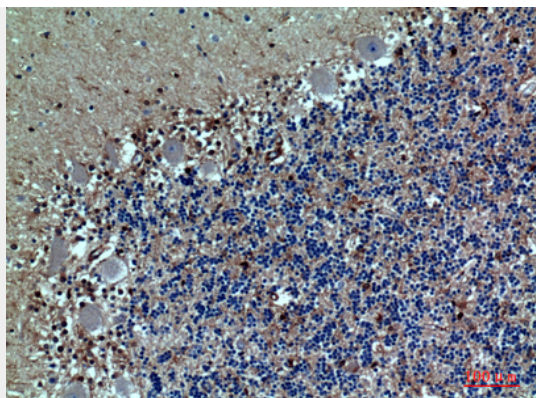
Immunohistochemical analysis of paraffin-embedded human-brain, antibody was diluted at 1:100



Western Blot analysis of NIH-3T3 cells using PSGL-1 Polyclonal Antibody.. Secondary antibody was diluted at 1:20000



Immunohistochemical analysis of paraffin-embedded human-brain, antibody was diluted at 1:100



Immunohistochemical analysis of paraffin-embedded human-brain, antibody was diluted at 1:100

PSGL-1 Polyclonal Antibody - Background

A SLe(x)-type proteoglycan, which through high affinity, calcium-dependent interactions with E-, P- and L-selectins, mediates rapid rolling of leukocytes over vascular surfaces during the initial steps in inflammation. Critical for the initial leukocyte capture.