

SOD-2 Polyclonal Antibody
Catalog # AP73758**Specification**

SOD-2 Polyclonal Antibody - Product Information

Application	WB, IHC-P
Primary Accession	P04179
Reactivity	Human, Mouse, Rat
Host	Rabbit
Clonality	Polyclonal

SOD-2 Polyclonal Antibody - Additional Information**Gene ID** 6648**Other Names**

SOD2; Superoxide dismutase [Mn], mitochondrial

Dilution

WB~~1:1000

IHC-P~~N/A

Format

Liquid in PBS containing 50% glycerol, 0.5% BSA and 0.09% (W/V) sodium azide.

Storage Conditions

-20°C

SOD-2 Polyclonal Antibody - Protein Information**Name** SOD2**Function**

Destroys superoxide anion radicals which are normally produced within the cells and which are toxic to biological systems.

Cellular Location

Mitochondrion matrix.

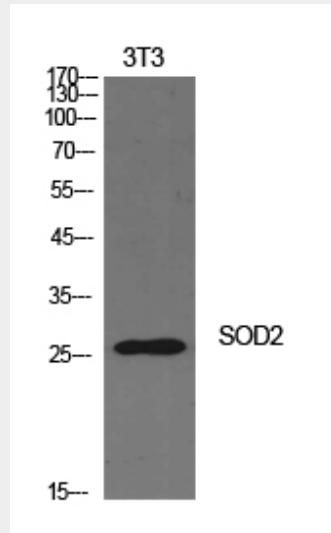
SOD-2 Polyclonal Antibody - Protocols

Provided below are standard protocols that you may find useful for product applications.

- [Western Blot](#)
- [Blocking Peptides](#)
- [Dot Blot](#)

- [Immunohistochemistry](#)
- [Immunofluorescence](#)
- [Immunoprecipitation](#)
- [Flow Cytometry](#)
- [Cell Culture](#)

SOD-2 Polyclonal Antibody - Images



Western Blot analysis of NIH-3T3 cells using SOD-2 Polyclonal Antibody.. Secondary antibody was diluted at 1:20000

SOD-2 Polyclonal Antibody - Background

Destroys superoxide anion radicals which are normally produced within the cells and which are toxic to biological systems.