

**Talin-1 Polyclonal Antibody**  
**Catalog # AP73759****Specification**

---

**Talin-1 Polyclonal Antibody - Product Information**

Application	WB
Primary Accession	<a href="#">Q9Y490</a>
Reactivity	Human, Mouse, Rat
Host	Rabbit
Clonality	Polyclonal

**Talin-1 Polyclonal Antibody - Additional Information****Gene ID** 7094**Other Names**

TLN1; KIAA1027; TLN; Talin-1

**Dilution**

WB~~Western Blot: 1/500 - 1/2000. IHC-p: 1:100-1:300. ELISA: 1/10000. Not yet tested in other applications.

**Format**

Liquid in PBS containing 50% glycerol, 0.5% BSA and 0.09% (W/V) sodium azide.

**Storage Conditions**

-20°C

**Talin-1 Polyclonal Antibody - Protein Information****Name** TLN1**Synonyms** KIAA1027, TLN**Function**

High molecular weight cytoskeletal protein concentrated at regions of cell-substratum contact and, in lymphocytes, at cell-cell contacts (By similarity). Involved in connections of major cytoskeletal structures to the plasma membrane (By similarity).

**Cellular Location**

Cell projection, ruffle membrane; Peripheral membrane protein; Cytoplasmic side. Cytoplasm, cytoskeleton. Cell surface {ECO:0000250|UniProtKB:P26039}. Cell junction, focal adhesion {ECO:0000250|UniProtKB:P26039}. Note=Colocalizes with LAYN at the membrane ruffles. Localized preferentially in focal adhesions than fibrillar adhesions (By similarity).

**Tissue Location**

[Isoform 2]: Expressed at low to non-detectable levels in many tissues but highly expressed in skin and pancreas with other tissues including kidney cortex, endocervix, testis, pituitary, liver, and

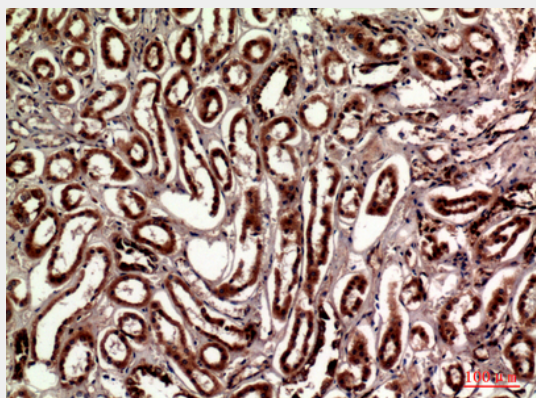
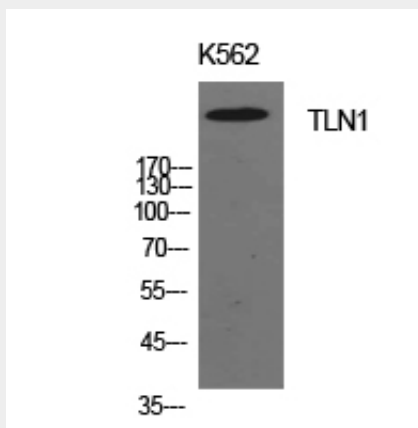
spleen also showing robust expression

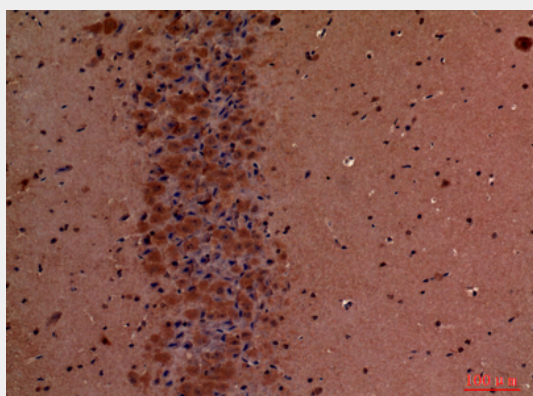
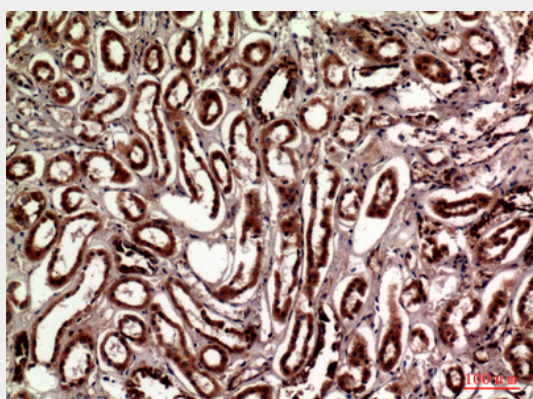
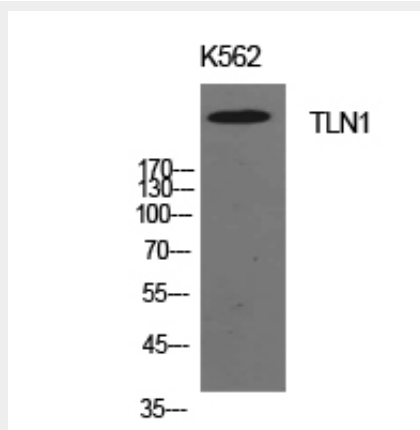
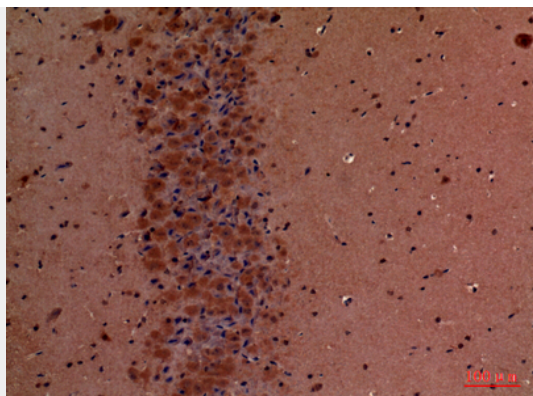
### Talin-1 Polyclonal Antibody - Protocols

Provided below are standard protocols that you may find useful for product applications.

- [Western Blot](#)
- [Blocking Peptides](#)
- [Dot Blot](#)
- [Immunohistochemistry](#)
- [Immunofluorescence](#)
- [Immunoprecipitation](#)
- [Flow Cytometry](#)
- [Cell Culture](#)

### Talin-1 Polyclonal Antibody - Images





### **Talin-1 Polyclonal Antibody - Background**

Probably involved in connections of major cytoskeletal structures to the plasma membrane. High molecular weight cytoskeletal protein concentrated at regions of cell-substratum contact and, in lymphocytes, at cell-cell contacts (By similarity).