

**CD6 Polyclonal Antibody**  
**Catalog # AP73760****Specification****CD6 Polyclonal Antibody - Product Information**

Application	<b>WB, IHC-P</b>
Primary Accession	<a href="#">P30203</a>
Reactivity	<b>Human</b>
Host	<b>Rabbit</b>
Clonality	<b>Polyclonal</b>

**CD6 Polyclonal Antibody - Additional Information****Gene ID** 923**Other Names**

CD6; T-cell differentiation antigen CD6; T12; TP120; CD6

**Dilution**

WB~~Western Blot: 1/500 - 1/2000. IHC-p: 1:100-1:300. ELISA: 1/10000. Not yet tested in other applications.

IHC-P~~N/A

**Format**

Liquid in PBS containing 50% glycerol, 0.5% BSA and 0.09% (W/V) sodium azide.

**Storage Conditions**

-20°C

**CD6 Polyclonal Antibody - Protein Information****Name** CD6 ([HGNC:1691](#))**Function**

Cell adhesion molecule that mediates cell-cell contacts and regulates T-cell responses via its interaction with ALCAM/CD166 (PubMed:<a href="http://www.uniprot.org/citations/15048703" target="\_blank">15048703</a>, PubMed:<a href="http://www.uniprot.org/citations/15294938" target="\_blank">15294938</a>, PubMed:<a href="http://www.uniprot.org/citations/16352806" target="\_blank">16352806</a>, PubMed:<a href="http://www.uniprot.org/citations/16914752" target="\_blank">16914752</a>, PubMed:<a href="http://www.uniprot.org/citations/24584089" target="\_blank">24584089</a>, PubMed:<a href="http://www.uniprot.org/citations/24945728" target="\_blank">24945728</a>). Contributes to signaling cascades triggered by activation of the TCR/CD3 complex (PubMed:<a href="http://www.uniprot.org/citations/24584089" target="\_blank">24584089</a>). Functions as a costimulatory molecule; promotes T-cell activation and proliferation (PubMed:<a href="http://www.uniprot.org/citations/15294938" target="\_blank">15294938</a>, PubMed:<a href="http://www.uniprot.org/citations/16352806" target="\_blank">16352806</a>, PubMed:<a href="http://www.uniprot.org/citations/16914752" target="\_blank">16914752</a>). Contributes to the formation and maturation of the

immunological synapse (PubMed:<a href="http://www.uniprot.org/citations/15294938" target="\_blank">15294938</a>, PubMed:<a href="http://www.uniprot.org/citations/16352806" target="\_blank">16352806</a>). Functions as a calcium- dependent pattern receptor that binds and aggregates both Gram-positive and Gram-negative bacteria. Binds both lipopolysaccharide (LPS) from Gram-negative bacteria and lipoteichoic acid from Gram-positive bacteria (PubMed:<a href="http://www.uniprot.org/citations/17601777" target="\_blank">17601777</a>). LPS binding leads to the activation of signaling cascades and down-stream MAP kinases (PubMed:<a href="http://www.uniprot.org/citations/17601777" target="\_blank">17601777</a>). Mediates activation of the inflammatory response and the secretion of pro-inflammatory cytokines in response to LPS (PubMed:<a href="http://www.uniprot.org/citations/17601777" target="\_blank">17601777</a>).

### Cellular Location

Cell membrane; Single-pass type I membrane protein. Note=Detected at the immunological synapse, i.e, at the contact zone between antigen-presenting dendritic cells and T-cells (PubMed:15294938, PubMed:16352806). Colocalizes with the TCR/CD3 complex at the immunological synapse (PubMed:15294938)

### Tissue Location

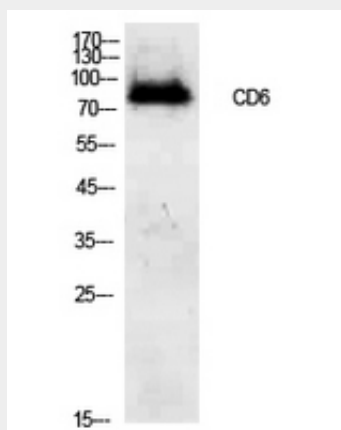
Detected on thymocytes (PubMed:15294938). Detected on peripheral blood T-cells (PubMed:15048703, PubMed:16352806) Detected on natural killer (NK) cells (PubMed:16352806). Soluble CD6 is detected in blood serum (at protein level) (PubMed:17601777). Detected in spleen, thymus, appendix, lymph node and peripheral blood leukocytes (PubMed:9013954). Expressed by thymocytes, mature T-cells, a subset of B-cells known as B-1 cells, and by some cells in the brain

## CD6 Polyclonal Antibody - Protocols

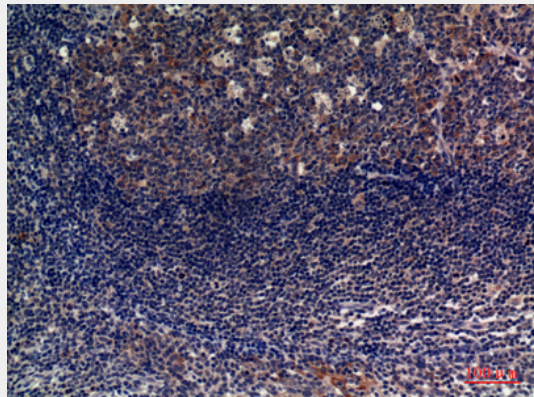
Provided below are standard protocols that you may find useful for product applications.

- [Western Blot](#)
- [Blocking Peptides](#)
- [Dot Blot](#)
- [Immunohistochemistry](#)
- [Immunofluorescence](#)
- [Immunoprecipitation](#)
- [Flow Cytometry](#)
- [Cell Culture](#)

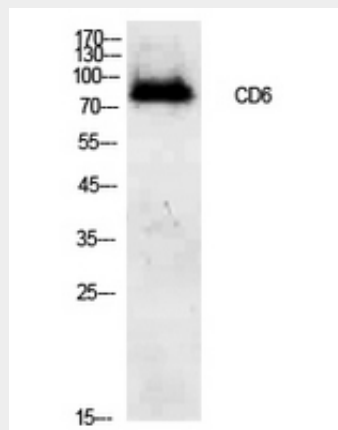
## CD6 Polyclonal Antibody - Images



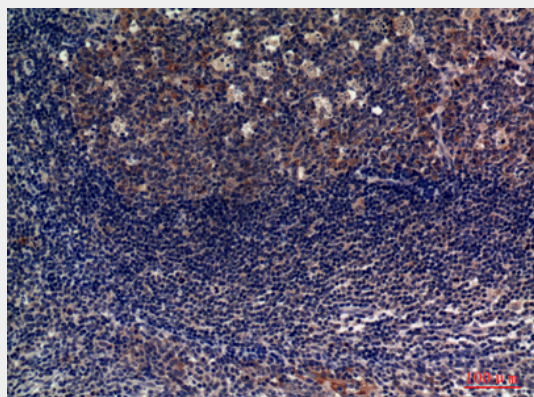
Western Blot analysis of 293 cells using CD6 Polyclonal Antibody.. Secondary antibody was diluted at 1:20000



Immunohistochemical analysis of paraffin-embedded human-tonsils, antibody was diluted at 1:100



Western Blot analysis of 293 cells using CD6 Polyclonal Antibody.. Secondary antibody was diluted at 1:20000



Immunohistochemical analysis of paraffin-embedded human-tonsils, antibody was diluted at 1:100

### CD6 Polyclonal Antibody - Background

Cell adhesion molecule that mediates cell-cell contacts and regulates T-cell responses via its interaction with ALCAM/CD166 (PubMed:15048703, PubMed:15294938, PubMed:16352806, PubMed:16914752, PubMed:24945728, PubMed:24584089). Contributes to signaling cascades triggered by activation of the TCR/CD3 complex (PubMed:24584089). Functions as costimulatory

molecule; promotes T-cell activation and proliferation (PubMed:15294938, PubMed:16352806, PubMed:16914752). Contributes to the formation and maturation of the immunological synapse (PubMed:15294938, PubMed:16352806). Functions as calcium-dependent pattern receptor that binds and aggregates both Gram-positive and Gram-negative bacteria. Binds both lipopolysaccharide (LPS) from Gram-negative bacteria and lipoteichoic acid from Gram-positive bacteria (PubMed:17601777). LPS binding leads to the activation of signaling cascades and down-stream MAP kinases (PubMed:17601777). Mediates activation of the inflammatory response and the secretion of pro-inflammatory cytokines in response to LPS (PubMed:17601777).