

Nectin 1 Polyclonal Antibody
Catalog # AP73785**Specification**

Nectin 1 Polyclonal Antibody - Product Information

Application	WB
Primary Accession	Q15223
Reactivity	Human, Mouse, Rat
Host	Rabbit
Clonality	Polyclonal

Nectin 1 Polyclonal Antibody - Additional Information**Gene ID** 5818**Other Names**

PVRL1; HVEC; PRR1; Poliovirus receptor-related protein 1; Herpes virus entry mediator C; Herpesvirus entry mediator C; HveC; Herpesvirus Ig-like receptor; HlgR; Nectin-1; CD111

Dilution

WB~~Western Blot: 1/500 - 1/2000. ELISA: 1/10000. Not yet tested in other applications.

Format

Liquid in PBS containing 50% glycerol, 0.5% BSA and 0.09% (W/V) sodium azide.

Storage Conditions

-20°C

Nectin 1 Polyclonal Antibody - Protein Information**Name** NECTIN1 {ECO:0000303|PubMed:11356977, ECO:0000312|HGNC:HGNC:9706}**Function**

Cell adhesion molecule that promotes cell-cell contacts and plays important roles in the development of the nervous system (PubMed:21325282). Acts by forming homophilic or heterophilic trans- dimers (PubMed:21325282). Heterophilic interactions have been detected between NECTIN1 and NECTIN3 and between NECTIN1 and NECTIN4 (By similarity). Involved in axon guidance by promoting contacts between the commissural axons and the floor plate cells (By similarity). Involved in synaptogenesis (By similarity). Has some neurite outgrowth- promoting activity (By similarity). Promotes formation of checkerboard- like cellular pattern of hair cells and supporting cells in the auditory epithelium via heterophilic interaction with NECTIN3: NECTIN1 is present in the membrane of hair cells and associates with NECTIN3 on supporting cells, thereby mediating heterotypic adhesion between these two cell types (By similarity). Required for enamel mineralization (By similarity).

Cellular Location

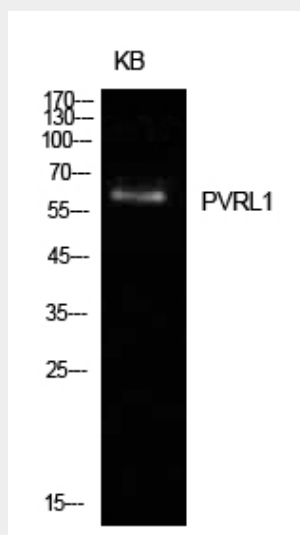
Cell membrane; Single-pass type I membrane protein. Cell junction, adherens junction. Presynaptic cell membrane {ECO:0000250|UniProtKB:Q9JKF6}; Single-pass type I membrane protein Note=In the auditory epithelium, specifically localizes to the apical side of the lateral membranes of hair cells {ECO:0000250|UniProtKB:Q9JKF6} [Isoform Delta]: Cell membrane; Single-pass type I membrane protein

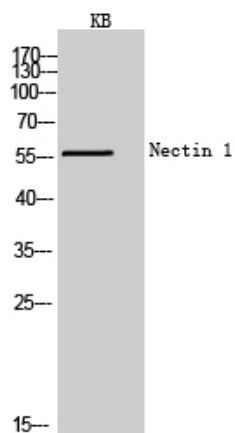
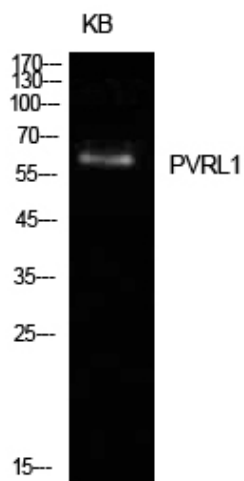
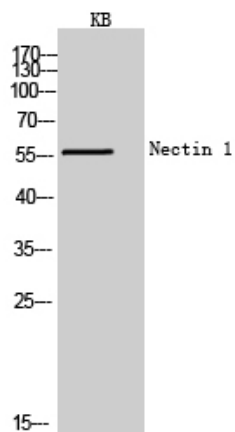
Nectin 1 Polyclonal Antibody - Protocols

Provided below are standard protocols that you may find useful for product applications.

- [Western Blot](#)
- [Blocking Peptides](#)
- [Dot Blot](#)
- [Immunohistochemistry](#)
- [Immunofluorescence](#)
- [Immunoprecipitation](#)
- [Flow Cytometry](#)
- [Cell Culture](#)

Nectin 1 Polyclonal Antibody - Images





Nectin 1 Polyclonal Antibody - Background

Promotes cell-cell contacts by forming homophilic or heterophilic trans-dimers. Heterophilic interactions have been detected between NECTIN1 and NECTIN3 and between NECTIN1 and NECTIN4. Has some neurite outgrowth-promoting activity.