

LIFR Polyclonal Antibody
Catalog # AP73787**Specification**

LIFR Polyclonal Antibody - Product Information

Application	WB
Primary Accession	P42702
Reactivity	Human
Host	Rabbit
Clonality	Polyclonal

LIFR Polyclonal Antibody - Additional Information**Gene ID** 3977**Other Names**

LIFR; Leukemia inhibitory factor receptor; LIF receptor; LIF-R; CD118

Dilution

WB~~Western Blot: 1/500 - 1/2000. ELISA: 1/10000. Not yet tested in other applications.

Format

Liquid in PBS containing 50% glycerol, 0.5% BSA and 0.09% (W/V) sodium azide.

Storage Conditions

-20°C

LIFR Polyclonal Antibody - Protein Information**Name** LIFR**Function**

Signal-transducing molecule. May have a common pathway with IL6ST. The soluble form inhibits the biological activity of LIF by blocking its binding to receptors on target cells.

Cellular Location

[Isoform 1]: Cell membrane; Single-pass type I membrane protein

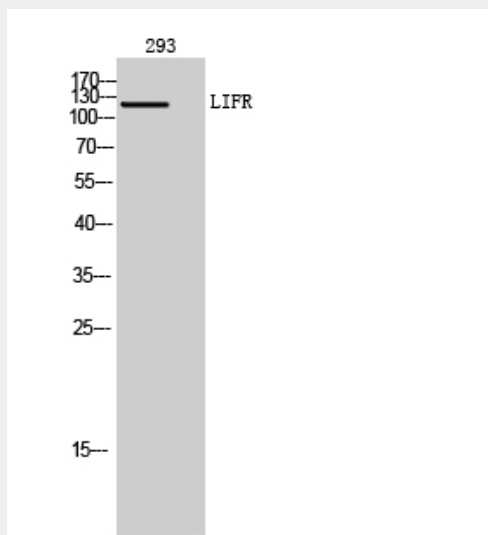
LIFR Polyclonal Antibody - Protocols

Provided below are standard protocols that you may find useful for product applications.

- [Western Blot](#)
- [Blocking Peptides](#)
- [Dot Blot](#)
- [Immunohistochemistry](#)

- [Immunofluorescence](#)
- [Immunoprecipitation](#)
- [Flow Cytometry](#)
- [Cell Culture](#)

LIFR Polyclonal Antibody - Images



Western Blot analysis of 293 cells using LIFR Polyclonal Antibody.. Secondary antibody was diluted at 1:20000

LIFR Polyclonal Antibody - Background

Signal-transducing molecule. May have a common pathway with IL6ST. The soluble form inhibits the biological activity of LIF by blocking its binding to receptors on target cells.