

**CD138 Polyclonal Antibody**  
**Catalog # AP73793****Specification**

---

**CD138 Polyclonal Antibody - Product Information**

Application	WB, IHC-P
Primary Accession	<a href="#">P18827</a>
Reactivity	Human
Host	Rabbit
Clonality	Polyclonal

**CD138 Polyclonal Antibody - Additional Information****Gene ID** 6382**Other Names**

SDC1; SDC; Syndecan-1; SYND1; CD138

**Dilution**

WB~~Western Blot: 1/500 - 1/2000. IHC-p: 1:100-1:300. ELISA: 1/10000. Not yet tested in other applications.

IHC-P~~N/A

**Format**

Liquid in PBS containing 50% glycerol, 0.5% BSA and 0.09% (W/V) sodium azide.

**Storage Conditions**

-20°C

**CD138 Polyclonal Antibody - Protein Information****Name** SDC1 ([HGNC:10658](#))**Synonyms** SDC**Function**

Cell surface proteoglycan that contains both heparan sulfate and chondroitin sulfate and that links the cytoskeleton to the interstitial matrix (By similarity). Regulates exosome biogenesis in concert with SDCBP and PDCD6IP (PubMed:<a href="http://www.uniprot.org/citations/22660413" target="\_blank">22660413</a>). Able to induce its own expression in dental mesenchymal cells and also in the neighboring dental epithelial cells via an MSX1-mediated pathway (By similarity).

**Cellular Location**

Membrane; Single-pass type I membrane protein. Secreted Secreted, extracellular exosome  
Note=Shedding of the ectodomain produces a soluble form

**Tissue Location**

Detected in placenta (at protein level) (PubMed:32337544). Detected in fibroblasts (at protein

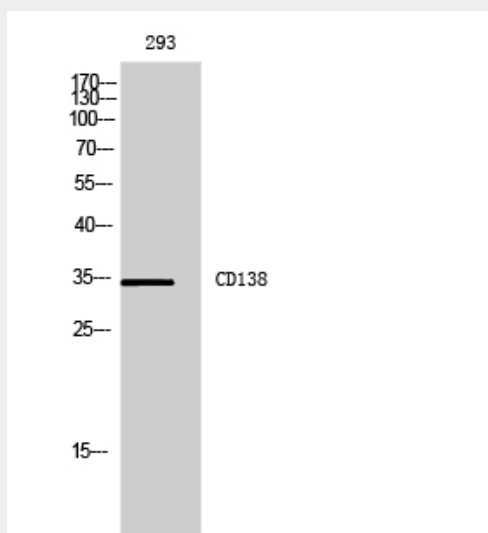
level) (PubMed:36213313).

### CD138 Polyclonal Antibody - Protocols

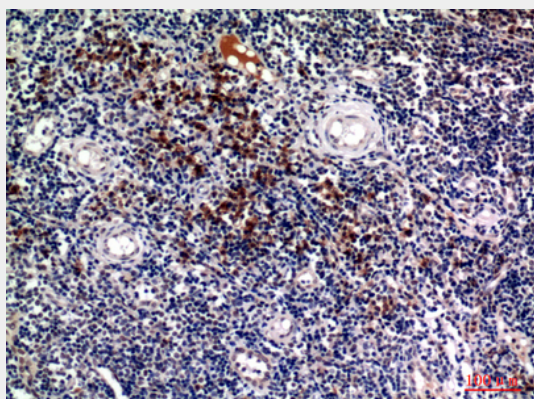
Provided below are standard protocols that you may find useful for product applications.

- [Western Blot](#)
- [Blocking Peptides](#)
- [Dot Blot](#)
- [Immunohistochemistry](#)
- [Immunofluorescence](#)
- [Immunoprecipitation](#)
- [Flow Cytometry](#)
- [Cell Culture](#)

### CD138 Polyclonal Antibody - Images



Western Blot analysis of 293 cells using CD138 Polyclonal Antibody.. Secondary antibody was diluted at 1:20000



Immunohistochemical analysis of paraffin-embedded human-tonsils, antibody was diluted at 1:100

### CD138 Polyclonal Antibody - Background

Cell surface proteoglycan that bears both heparan sulfate and chondroitin sulfate and that links the cytoskeleton to the interstitial matrix. Regulates exosome biogenesis in concert with SDCBP and PDCD6IP (PubMed:22660413).