

Blr1 Polyclonal Antibody
Catalog # AP73796**Specification**

Blr1 Polyclonal Antibody - Product Information

Application	WB
Primary Accession	P32302
Reactivity	Human
Host	Rabbit
Clonality	Polyclonal

Blr1 Polyclonal Antibody - Additional Information**Gene ID** 643**Other Names**

CXCR5; BLR1; MDR15; C-X-C chemokine receptor type 5; CXC-R5; CXCR-5; Burkitt lymphoma receptor 1; Monocyte-derived receptor 15; MDR-15; CD185

Dilution

WB~~Western Blot: 1/500 - 1/2000. ELISA: 1/10000. Not yet tested in other applications.

Format

Liquid in PBS containing 50% glycerol, 0.5% BSA and 0.09% (W/V) sodium azide.

Storage Conditions

-20°C

Blr1 Polyclonal Antibody - Protein Information**Name** CXCR5**Synonyms** BLR1, MDR15**Function**

Cytokine receptor that binds to B-lymphocyte chemoattractant (BLC). Involved in B-cell migration into B-cell follicles of spleen and Peyer patches but not into those of mesenteric or peripheral lymph nodes. May have a regulatory function in Burkitt lymphoma (BL) lymphomagenesis and/or B-cell differentiation.

Cellular Location

Cell membrane; Multi-pass membrane protein.

Tissue Location

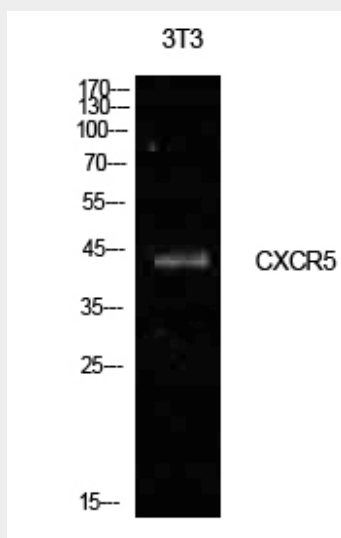
Expression in mature B-cells and Burkitt lymphoma cells

Blr1 Polyclonal Antibody - Protocols

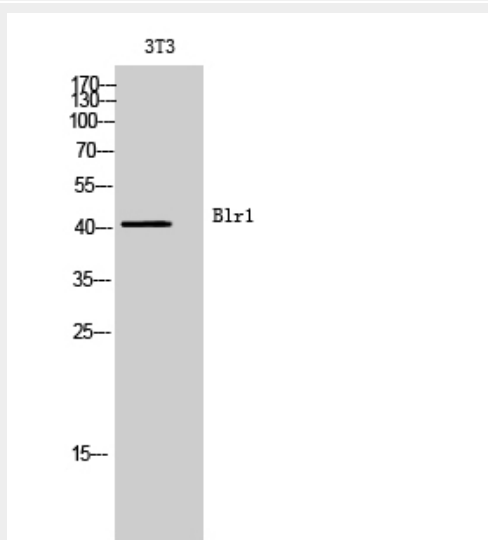
Provided below are standard protocols that you may find useful for product applications.

- [Western Blot](#)
- [Blocking Peptides](#)
- [Dot Blot](#)
- [Immunohistochemistry](#)
- [Immunofluorescence](#)
- [Immunoprecipitation](#)
- [Flow Cytometry](#)
- [Cell Culture](#)

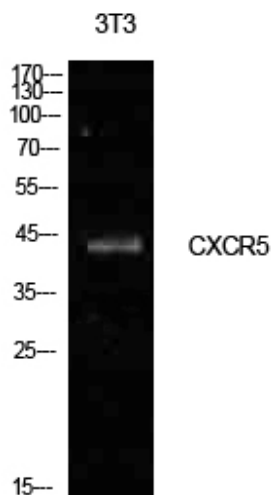
Blr1 Polyclonal Antibody - Images



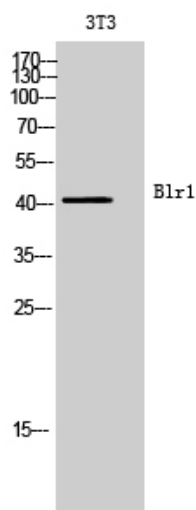
Western Blot analysis of NIH-3T3 cells using Blr1 Polyclonal Antibody.. Secondary antibody was diluted at 1:20000



Western Blot analysis of 3T3 cells using Blr1 Polyclonal Antibody. Secondary antibody was diluted at 1:20000



Western Blot analysis of NIH-3T3 cells using Blr1 Polyclonal Antibody.. Secondary antibody was diluted at 1:20000



Western Blot analysis of 3T3 cells using Blr1 Polyclonal Antibody. Secondary antibody was diluted at 1:20000

Blr1 Polyclonal Antibody - Background

Cytokine receptor that binds to B-lymphocyte chemoattractant (BLC). Involved in B-cell migration into B-cell follicles of spleen and Peyer patches but not into those of mesenteric or peripheral lymph nodes. May have a regulatory function in Burkitt lymphoma (BL) lymphomagenesis and/or B-cell differentiation.