

IL-12R β 1 Polyclonal Antibody
Catalog # AP73797**Specification**

IL-12R β 1 Polyclonal Antibody - Product Information

Application	WB
Primary Accession	P42701
Reactivity	Human
Host	Rabbit
Clonality	Polyclonal

IL-12R β 1 Polyclonal Antibody - Additional Information**Gene ID** 3594**Other Names**

IL12RB1; IL12R; IL12RB; Interleukin-12 receptor subunit beta-1; IL-12 receptor subunit beta-1; IL-12R subunit beta-1; IL-12R-beta-1; IL-12RB1; IL-12 receptor beta component; CD212

Dilution

WB~~Western Blot: 1/500 - 1/2000. ELISA: 1/10000. Not yet tested in other applications.

Format

Liquid in PBS containing 50% glycerol, 0.5% BSA and 0.09% (W/V) sodium azide.

Storage Conditions

-20°C

IL-12R β 1 Polyclonal Antibody - Protein Information**Name** IL12RB1**Synonyms** IL12R, IL12RB**Function**

Functions as an interleukin receptor which binds interleukin- 12 with low affinity and is involved in IL12 transduction. Associated with IL12RB2 it forms a functional, high affinity receptor for IL12. Associates also with IL23R to form the interleukin-23 receptor which functions in IL23 signal transduction probably through activation of the Jak-Stat signaling cascade.

Cellular Location

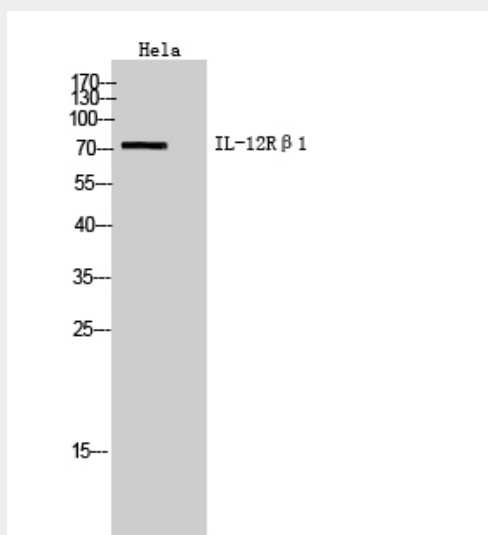
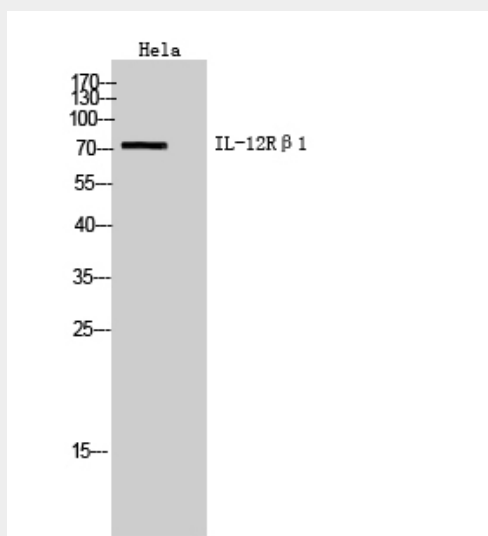
Membrane; Single-pass type I membrane protein.

IL-12R β 1 Polyclonal Antibody - Protocols

Provided below are standard protocols that you may find useful for product applications.

- [Western Blot](#)
- [Blocking Peptides](#)
- [Dot Blot](#)
- [Immunohistochemistry](#)
- [Immunofluorescence](#)
- [Immunoprecipitation](#)
- [Flow Cytometry](#)
- [Cell Culture](#)

IL-12R β 1 Polyclonal Antibody - Images



IL-12R β 1 Polyclonal Antibody - Background

Functions as an interleukin receptor which binds interleukin-12 with low affinity and is involved in IL12 transduction. Associated with IL12RB2 it forms a functional, high affinity receptor for IL12. Associates also with IL23R to form the interleukin-23 receptor which functions in IL23 signal transduction probably through activation of the Jak-Stat signaling cascade.